



Comprehensive Flood Information at Your Fingertips

Presented by:
Clay Campbell, PE
June 19, 2018

Outreach is Critical!

- **Increase public awareness and understanding of risk** and vulnerability to floods plus options for minimizing their risk;
- **Keep citizens**, public officials and stakeholders **informed**;
- **Increase engagement** of county and city elected officials;
- **Foster** stakeholder **awareness**;
- **Provide** communities with outreach **tools**.



Alabama Risk MAP Program



Alabama CTP Production Model

- Work typically performed locally
- Establish relationships with local stakeholders
- Local knowledge including needs and leverage opportunities
- More customized local solutions
- **Increases local involvement** in NFIP-related activities

Alabama Risk MAP Goals

- **Increase focus on risk assessment and planning**
- Continue partnerships with federal, state, and local agencies
- Acquire and utilize high accuracy topographic data
- Deliver high quality risk products and datasets

Benefits of the program

- **Help communities make better decisions on development**
- **Provide online resource for citizens to learn about their flood risk**



Alabama Risk MAP Projects



Effective FIRMs Issued

- Houston County
- Upper Alabama Watershed
- Middle Coosa Watershed
- Upper Choctawhatchee Watershed



Preliminary FIRMs Issued

- Wheeler Lake Watershed
- Locust Fork Watershed
- Baldwin County
- Mobile County
- Cahaba Watershed



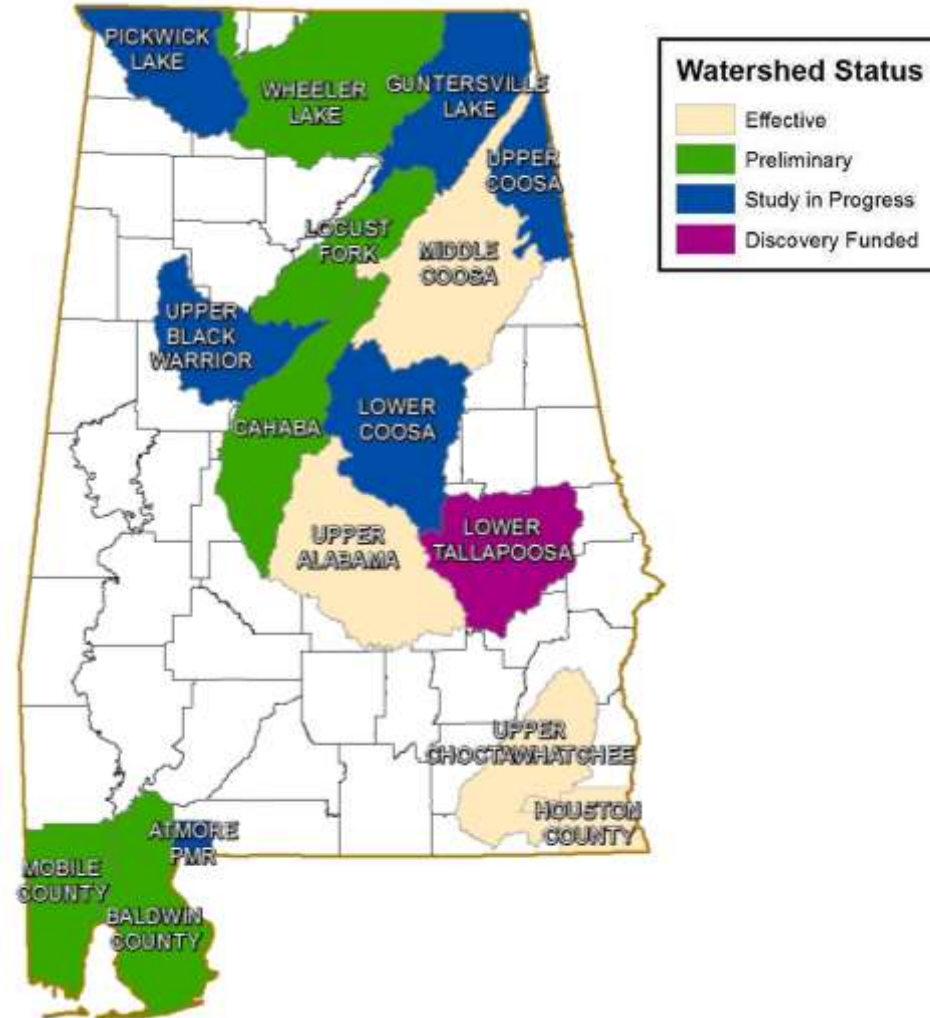
Study In Progress

- Upper Black Warrior Watershed
- Guntersville Lake Watershed
- City of Atmore PMR
- Pickwick Lake Watershed
- Upper Coosa Watershed
- Lower Coosa Watershed



Discovery In Progress

- Lower Tallapoosa Watershed



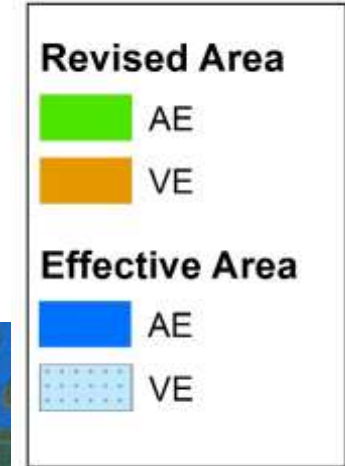
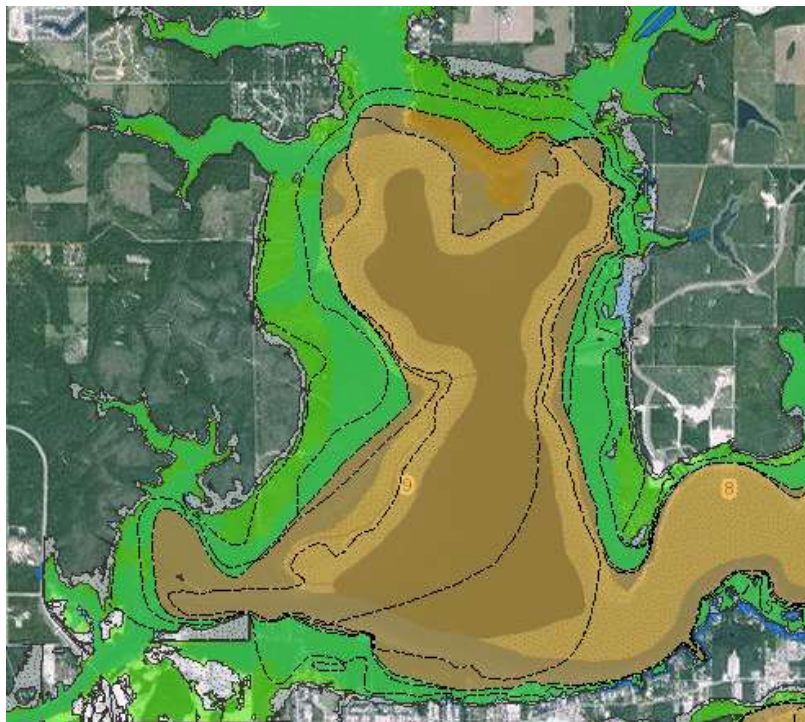
AL Flood Risk Information Website

<http://www.alabamaflood.com/>



Initial Focus of alabamaflood.com

- To provide up to date flood risk information to stakeholders during Post-Preliminary Processing
 - Preliminary vs. Effective



Alabamaflood.com Data

- Statewide effective DFIRM database



Alabamaflood.com Data

- Current preliminary data



Alabamaflood.com Data

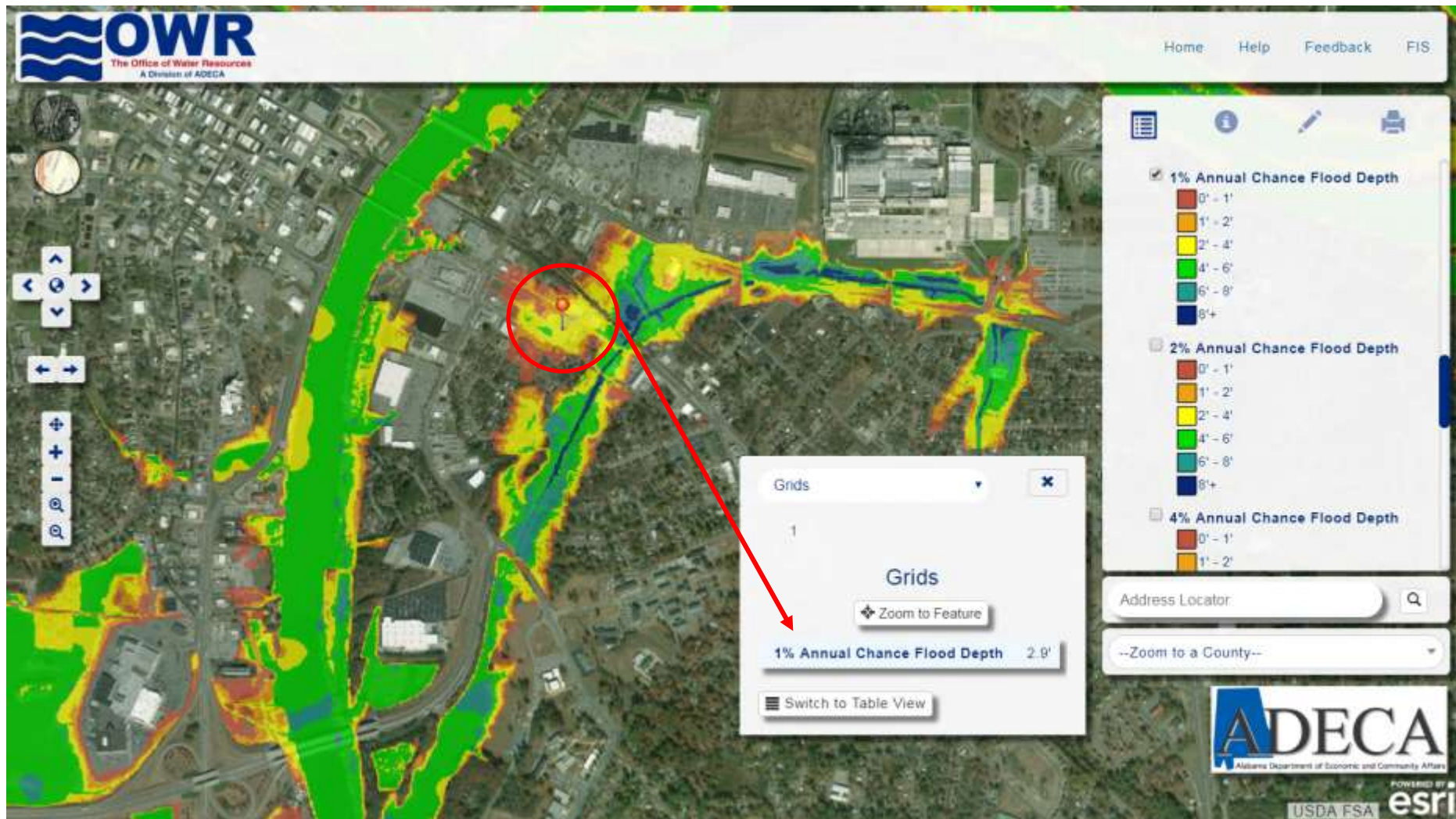
- Available Risk MAP Non-Regulatory Products (depending on project status)
 - AOMI
 - CSLF
 - Water Surface Elevations Grids
 - Depth Grids
 - Percent Annual Chance
 - Percent 30 Year Chance
 - HAZUS info
 - Census Block and Structure Level (where available)



CSLF

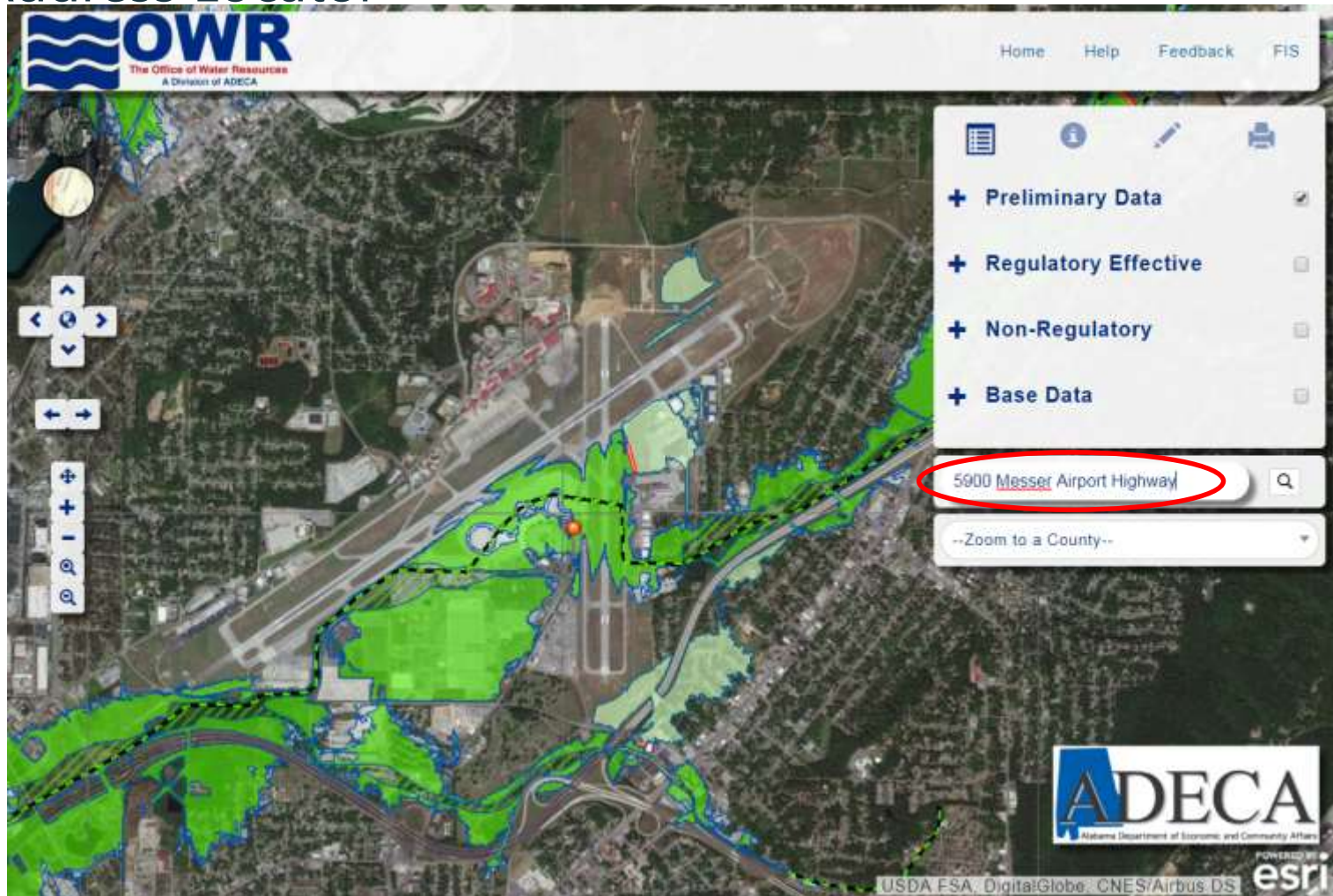


Depth Grids



Other Features

- Address Locator



Other Features

- Search and Identify

The image displays three screenshots of the ADECA web application interface, each showing a different data layer with interactive features highlighted by red circles and callouts.

FIRM Panel (Preliminary Data)

Highlighted features:

- Zoom to Feature** (arrow icon)
- Download FIRM Panel** (download icon)

Table Data:

PANEL	0392
FIRM Panel	01073C0392H
Panel Type	COUNTYWIDE, PANEL PRINTED
Prelim Date	3/29/2017
Effective Date	8/8/8888
SCALE	6000
Not Printed Reason	

Flood Hazard Area (Preliminary Data)

Highlighted features:

- Zoom to Feature** (arrow icon)
- Static_BFE** (value: 15)

Table Data:

Flood Zone	VE
Zone Subtype	
Static_BFE	15
V_DATUM	NAVD88
DEPTH	-9999
LEN_UNIT	FEET
VELOCITY	-9999
VEL_UNIT	

Building Footprints (Non-Regulatory)

Highlighted features:

- Zoom to Feature** (arrow icon)
- Switch to Table View** (table icon)

Table Data:

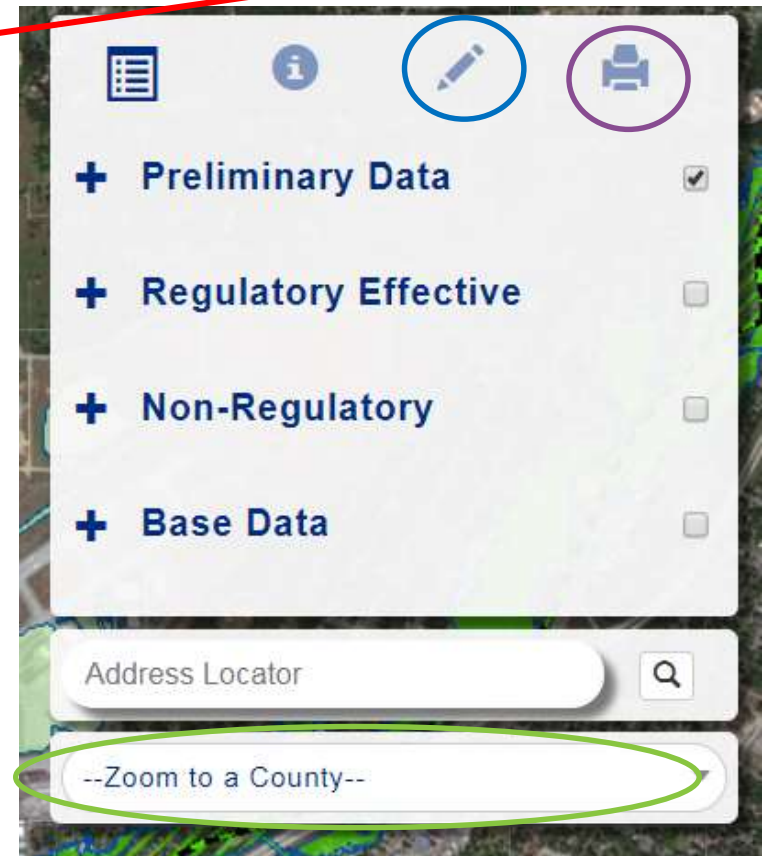
OBJECTID_1	831548
OBJECTID_2	
PARCELID	11010104003062000
COUNTY	Montgomery
UDF_ID	01101_110101040030620
UserDefine	US002248
Tract_1	01101000300
CensusBloc	011010003001068
LOSS_0_2PC	\$1,370,835.72573
LOSS_01PCT	\$148,918.248971
LOSS_02PCT	\$0

Callouts:

- Download option available** (purple oval callout pointing to the download icon in the FIRM Panel screenshot).
- SFHA (and VE callout)** (green box callout pointing to the 'ZONE VE (EL 15)' label in the Flood Hazard Area screenshot).
- Loss information (Building footprint level)** (green box callout pointing to the 'LOSS' fields in the Building Footprints screenshot).

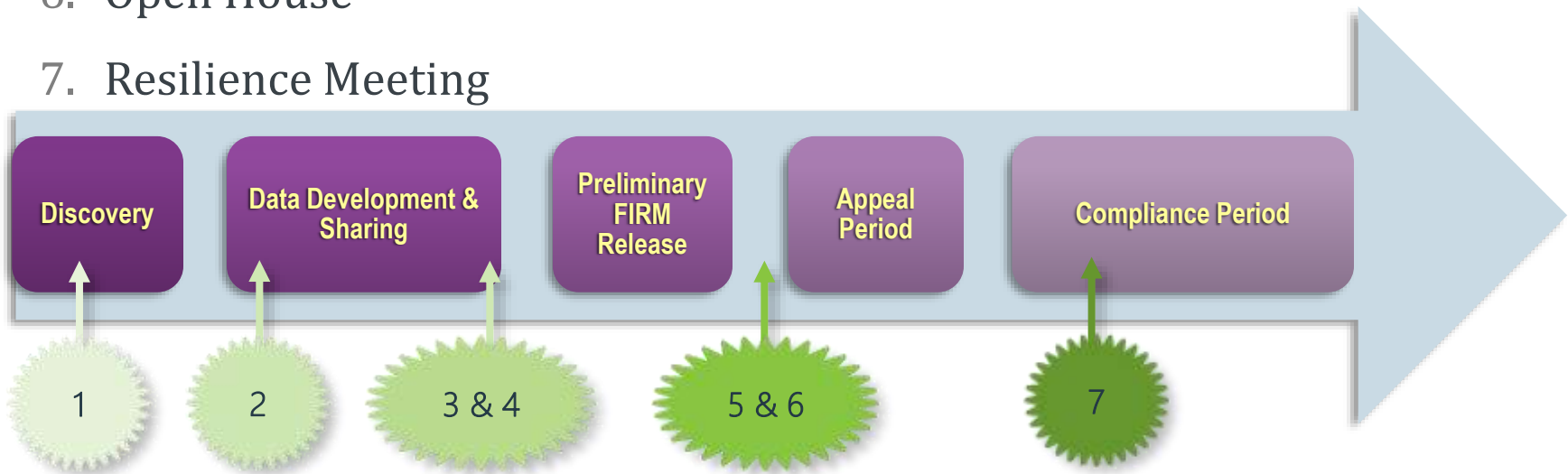
Other Features

- FIS Download (all counties)
- Measure Tool
- Print
- Zoom to County
- Password Protected Option



Recently Used at All Touchpoints

1. Discovery Meeting
2. Project Kickoff Meeting
3. Flood Study Working Session
4. Flood Risk Review Meeting
5. Preliminary DFIRM Community Coordination Meeting (PDCC)
6. Open House
7. Resilience Meeting



Coming Soon!!!

- Effective hydraulic model download
- On-demand BFE using 1% Water Surface Elevation Grids



- More YouTube Videos!



wood.

woodplc.com