

Political Support for the Floodplain Manager

ksn.com
LOCAL NEWS • HERE FOR YOU

NEWS ▾ WEATHER ▾ SPORTS ▾ ENTERTAINMENT ▾ MORE ▾ CONTESTS

Cutting of Saline County jobs ignites feud

By The Associated Press
Published: January 2, 2015, 10:14 am | Updated: January 2, 2015, 5:13 pm

Like Sign Up to see what your friends like.



Cutting of Saline County jobs ignites feud

SALINA JOURNAL

County drops jobs bombshell

By Tim Horan / Salina Journal

Posted Dec 31, 2014 at 12:01 AM

Updated Dec 31, 2014 at 2:00 AM

Saline County commissioners voted 2-1 Tuesday to cut four county department director positions, but the move might be temporary with three new commissioners coming on board Jan. 12.

Commissioner John Price and Chairman Randy Duncan voted to make today the last day at the county for county Administrator Rita Deister, Director of Road and Bridges Dave Nowak, and

In addition, the county won't replace Bronson Health Department. Farmer resigned in October. Announcement on Tuesday.

Deister on the proposal, which would save an

Deister and mayor Monte Shadwick, who won the election, were "shocked" by the decision, with two commissioners

and Dave Smith, will be sworn in as

Deister terms by Gov. Sam Brownback, after voters elected five members.

Shadwick said. "This is why they voted for five commissioners. Duncan was voted out overwhelmingly. People do business."

OUT THE REVOLVING DOOR?

Here's whom Saline County commissioners let go on Tuesday:

- **Rita Deister, county administrator**
Hired: May 20, 1991
Salary: \$124,550
- **Dave Nowak, director of the Road and Bridge Department**
Hired: Jan. 28, 1974, as an engineer; named director Aug. 23, 2005.
Salary: \$99,840
- **David Neal, director of planning and zoning**
Hired: Aug. 20, 2012
Salary: \$68,078



Deister



Neal

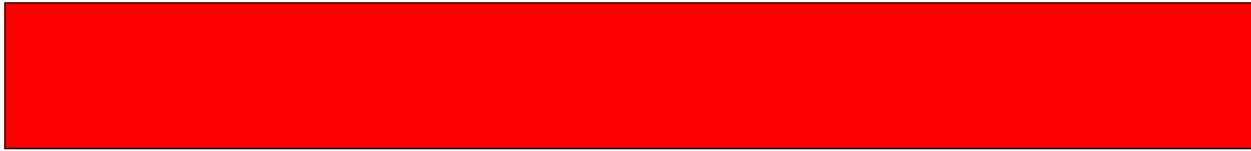
- In addition, the county won't fill the health department director's job, last held by Bronson Farmer.

Salary range: Between \$60,424 and \$93,641.
• Total savings: \$430,000 to \$470,000 yearly, according to John Price.

Political Support for the Floodplain Manager



**KEEP THE
POLITICIANS HAPPY...**



**VOTE
HERE**

**VOTE FOR KOCH
MR. FLOODPLAIN**



**BY KEEPING THEIR
VOTERS HAPPY.**



Outreach to Children



Outreach to Adults



Photo courtesy Urban Collaborative



Social Media and Websites

**City of Bel Aire - Government**
Published by Sprout Social (7) · April 11 at 9:46am · 🌐

There are residents who go over and above without ever being asked. Tony Walsh is one of those residents. You may have seen him picking up trash all over Bel Aire. To top it off, he has been volunteering his time and hard work for over a decade. He wasn't able to be here this morning but his wife Julie Walsh was able to accept his plaque on his behalf. Also pictured is Sabrina Cantrell with the Kansas Department of Health and Environment and Keith Price, Bel Aire Building and Zoning Director.

#BelAireProud #KeepBelAireBeautiful #LitterFree #ThankYou



 502 people reached

 Like  Comment  Share 

 24 Top Comments ▾





Carolyn Schafer Ewy I see him occasionally! Congratulations to Tony and bless him for what he does.

Like · Reply · Message · 1w



Scott Lunsford We appreciate you

Like · Reply · Message · 1w



[CITY OF MANHATTAN](#) [RESIDENTS](#) [GOVERNMENT](#) [INITIATIVES](#) [I WANT TO...](#)



KNOW YOUR FLOOD RISK

[Resources](#)

You Are Here: [Home](#) › [Residents](#) › [Know Your Flood Risk](#) › [Flood Mitigation](#)

Flood Mitigation

Following a flood event or other significant changes in a watershed, property owners may ask, "Is there any way to make improvements to my home or business to reduce future damages from flooding?" The answer is a resounding YES!



 [Select Language](#) ▾

[WATCH A MEETING](#)

[ACTIVE PROJECTS](#)

Library



Home Shows and Workshops



County Fair



Flood Safety Week



Civic Organizations



Forge Bonds



Signs



Should Have Read the Sign

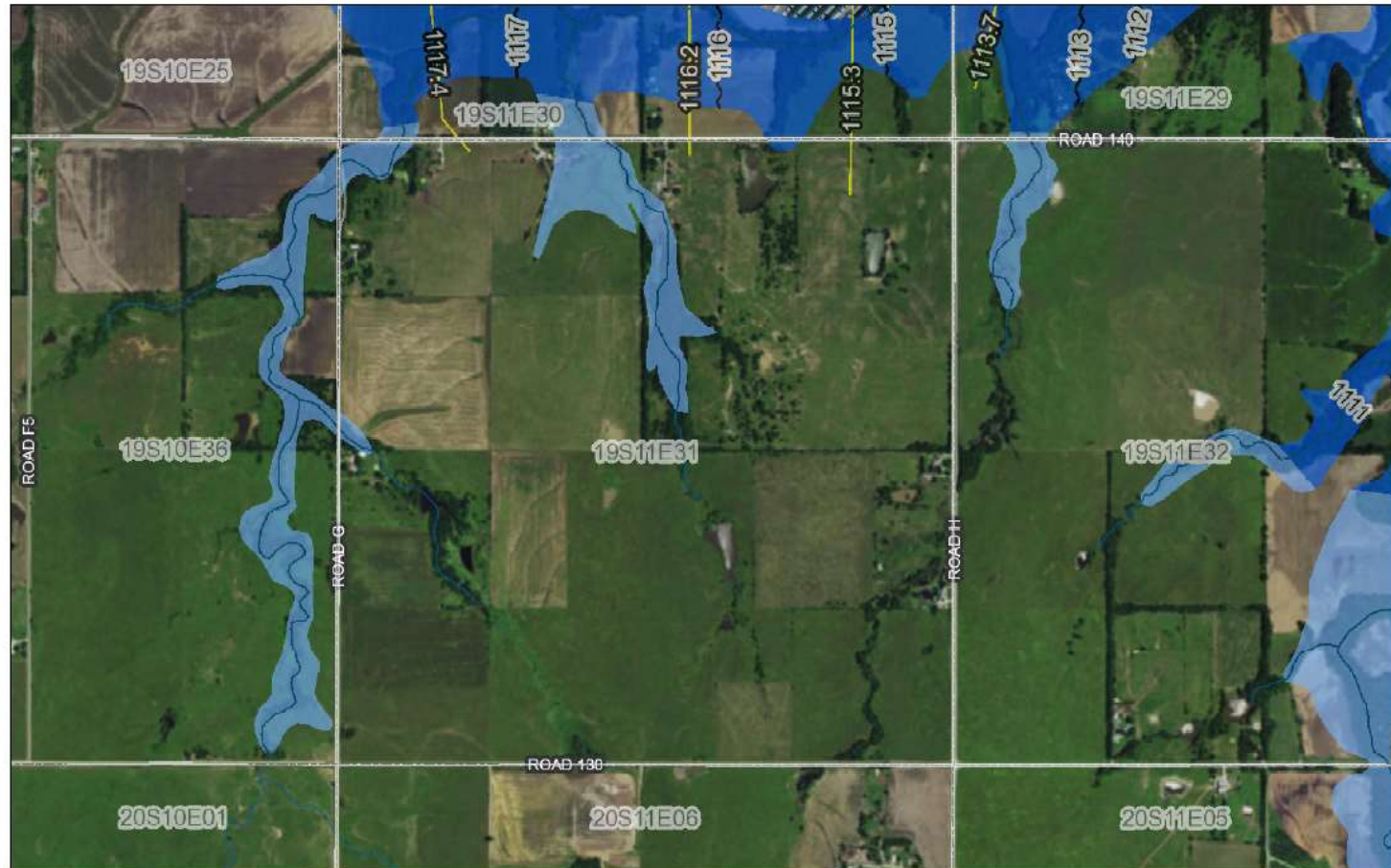


Signs



Permit Meeting

Lanzrath Farms Map



October 9, 2017

DFIRM Status



Effective DFIRM



Not Modernized



PLSS



Stream Centerline



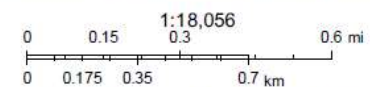
Base Flood Approximate Elevations



Lettered Cross Sections



Base Flood Elevations



Source: Esri, DigitalGlobe, GeoEye, Earthstar Geographics, CNES/Airbus DS, USDA, USGS, AeroGRID, IGN, and the GIS User Community

Base Flood Approximate Elevations developed by Kansas Department of Agriculture as a CTP for FEMA Region 7
Copyright 2014

Workshops



Meetings



Know Your Public



Know Your Governing Body



Mushrooms



Media Partners

http://www.emporiamagazine.com/news/government/article_1748a2d5-bd8d-51f8-b361-fa4d8dad5025.html

FEMA decision leaves Hartford in insurance bind

Brandy Nance Jan 24, 2007



The Hartford levee shows signs of having sleds recently.

Residents of east Hartford were disappointed after a teleconference call Tuesday among the Federal Emergency Management Agency, the Kansas Division of Water Resources and officials in Lyon County.

Steve Samuelson, Lyon County zoning director and flood plain manager, had asked FEMA to grant a two-year provisional certification of the Hartford levee, which protects the city from flooding by the Neosho River. In Tuesday's teleconference, Julie Grauer of FEMA

Other Partners



Board of Realtors And Other Associations



Communicate



Communication Tips

- **Avoid acronyms and technical language.**
- **Show you are listening.**
- **Turn off your phone.**
- **Be organized and clear.**
- **Don't get emotional.**
- **Don't give a sermon.**
- **Use appropriate body language.**
- **Speak clearly.**
- **Dress correctly for the meeting.**
- **Stay on topic.**
- **Thank people for attending the meeting.**

Public Survey



Professional Knowledge



Worn With Pride



Community Rating System



City Receives Awards For Flood Plan



By Hannah Alldritt

The Anthony City Commission met in regular session on June 6 at 6:00 p.m. with all five Commissioners present.

Two new City employees were introduced, Dave Larcom who will work in the Water/Sewer Dept. (introduced as Miss Connie's husband) and Faith Sauer, new member of the Anthony Police Dept. Sauer will leave for Academy on October 2.

If You Absolutely Must...

WANTED



REWARD
FOR THE HIGH CRIME OF
FLOODPLAIN MANAGEMENT

After a Disaster



Questions?

Steve Samuelson
Kansas NFIP Coordinator
Steve.Samuelson@ks.gov

