

Fast and Furious - Geospatial Damage Assessments





What?

- Categorize damage impact for “structures” in event area



How?

- Integrate geospatial data
- Use technology to automate process



Where?

- Anywhere data exists



When?

- As fast as possible



Why?

- Understand event magnitude
- Assist with recovery and mitigation efforts

A large, light blue double-headed arrow pointing left and right, spanning the width of the five columns above it.

Geospatial Damage Assessments

Inputs & Output



Structure



Ground Elevation



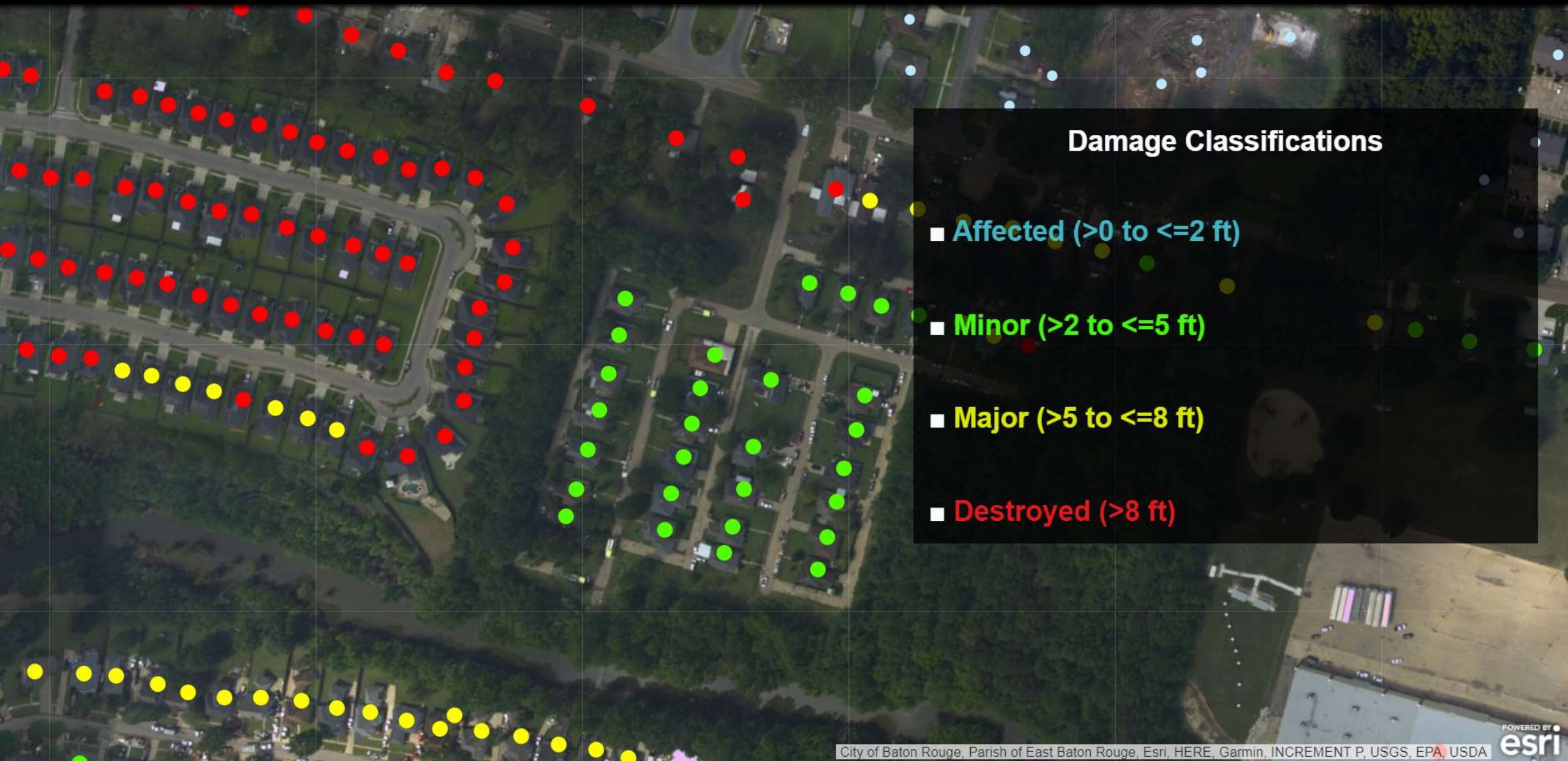
Flood Impacts



Imagery



Damage Assessments

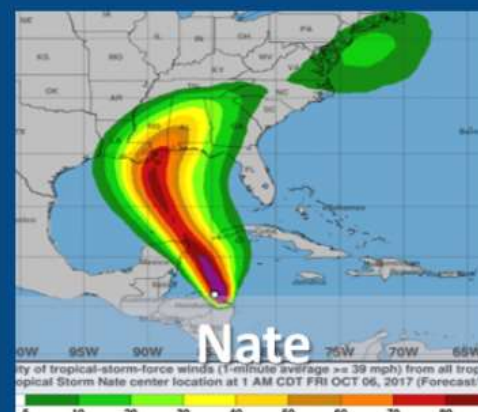
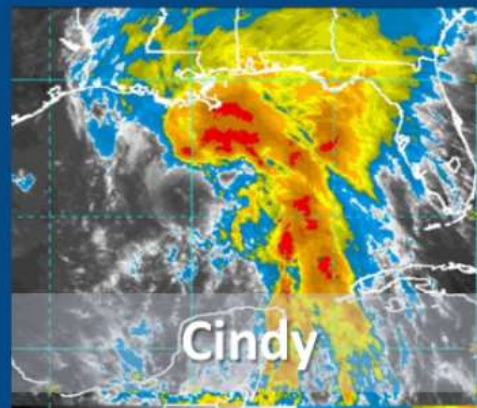
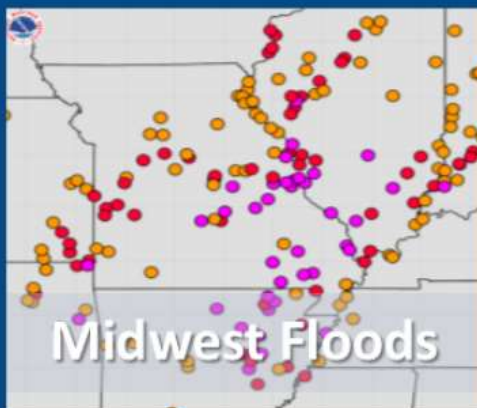
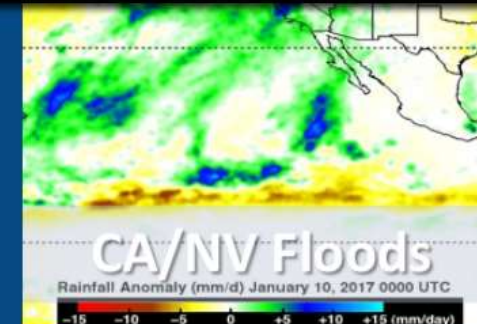


Damage Classifications

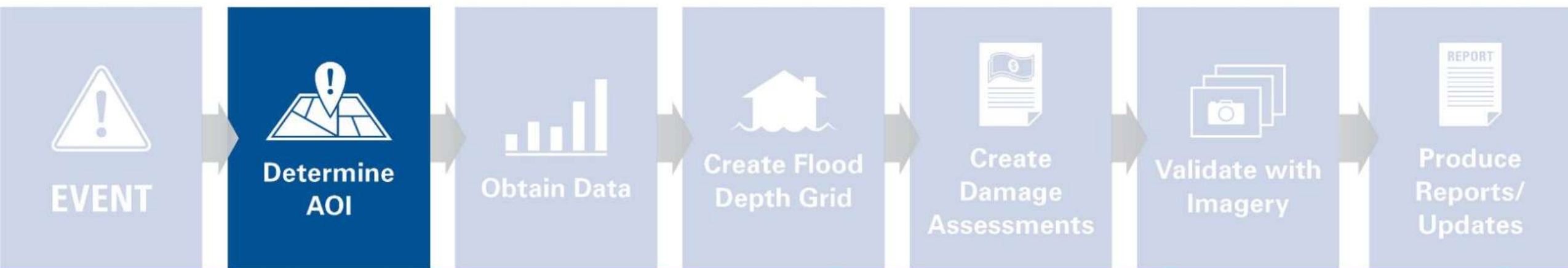
- Affected (>0 to <=2 ft)
- Minor (>2 to <=5 ft)
- Major (>5 to <=8 ft)
- Destroyed (>8 ft)

Our Process

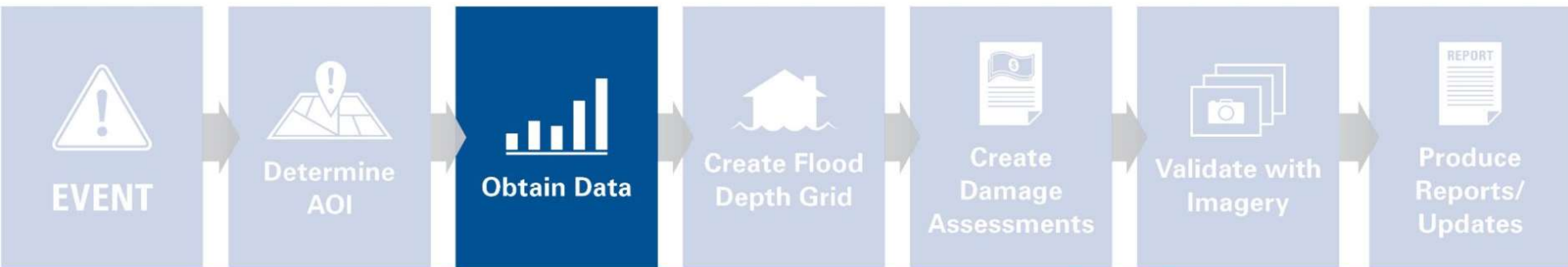




Our Process



Our Process



- Integrate multiple sources
- Check distribution
- Validate attributes

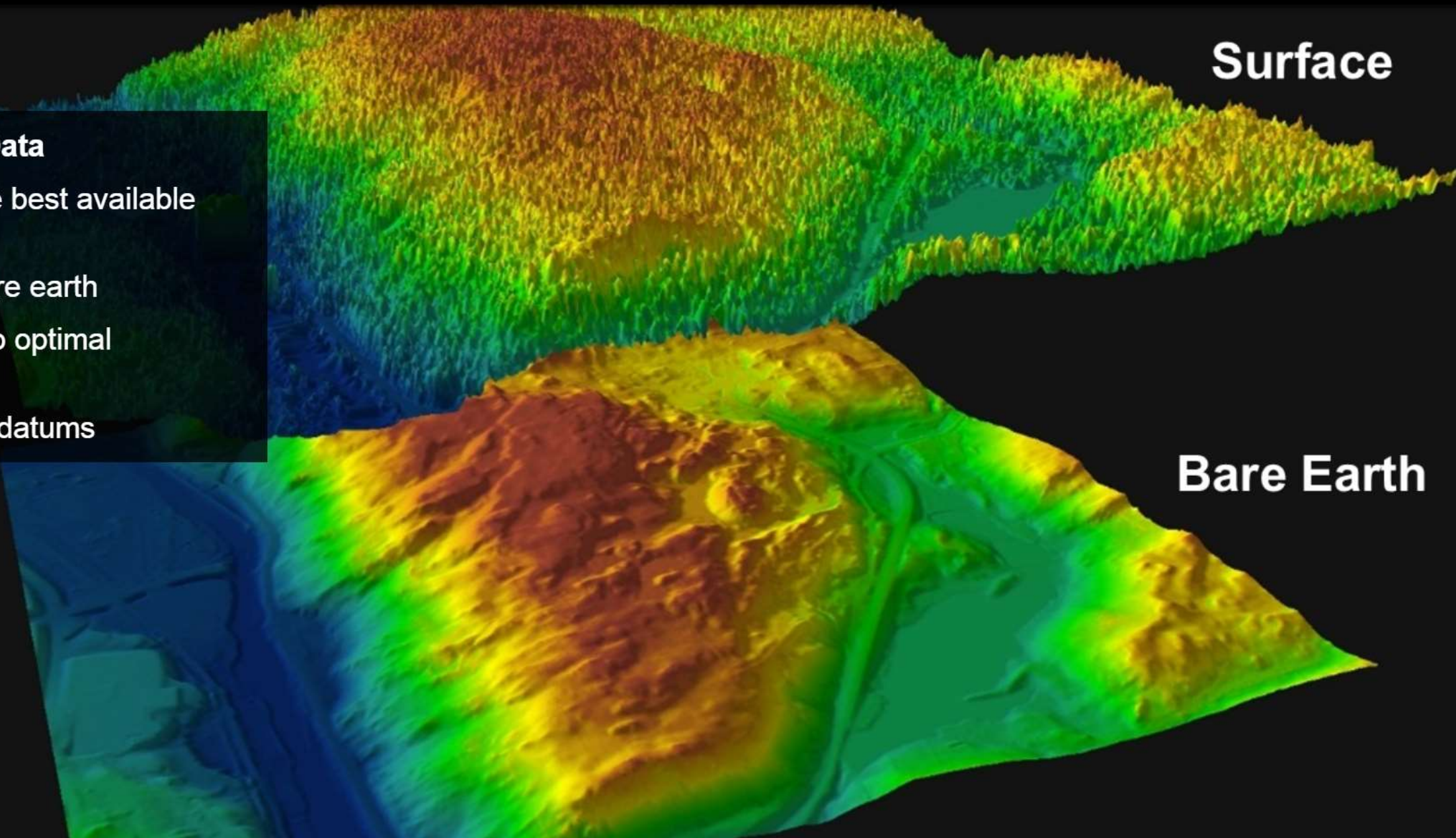


Surface

Elevation Data

- Determine best available source
- Obtain bare earth
- Process to optimal resolution
- Translate datums

Bare Earth



Our Process



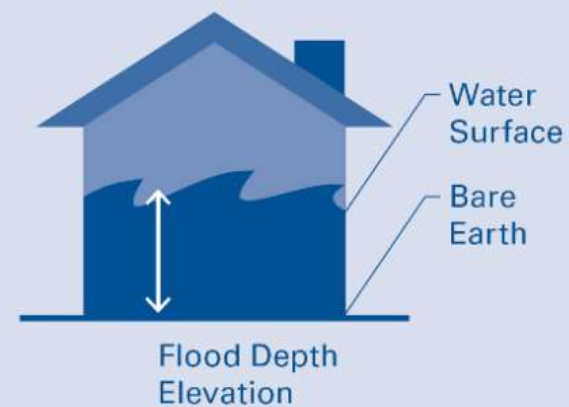
Water Surface Elevation

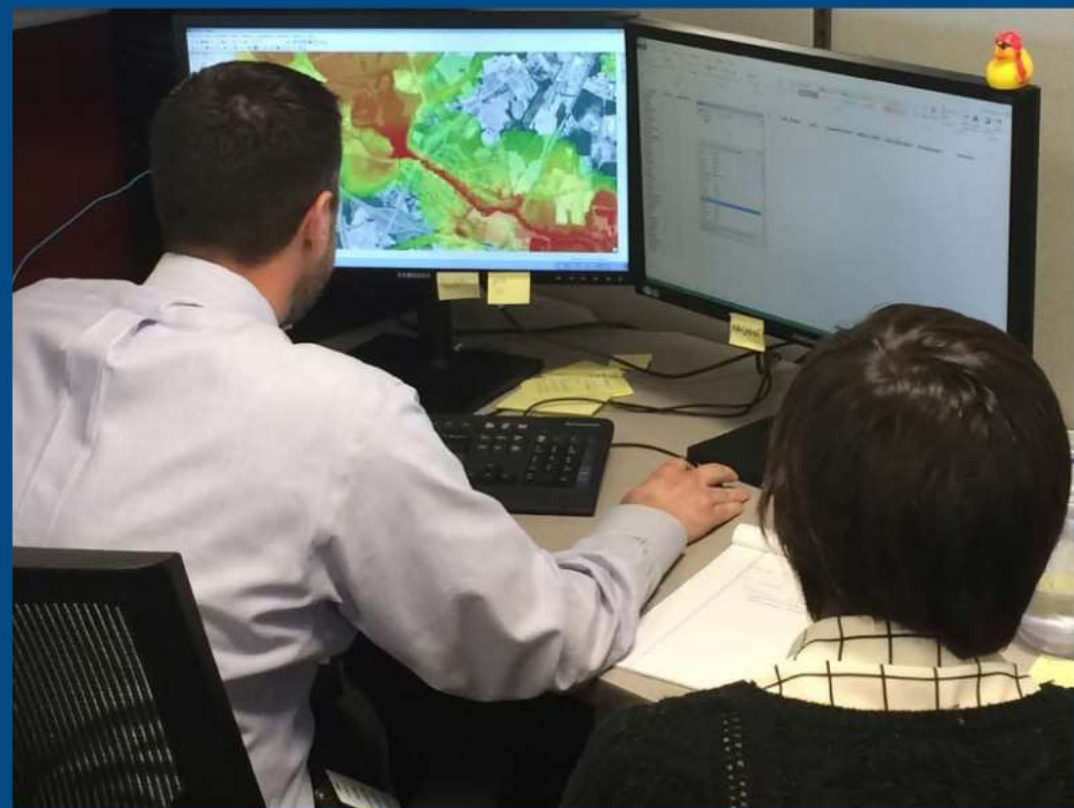
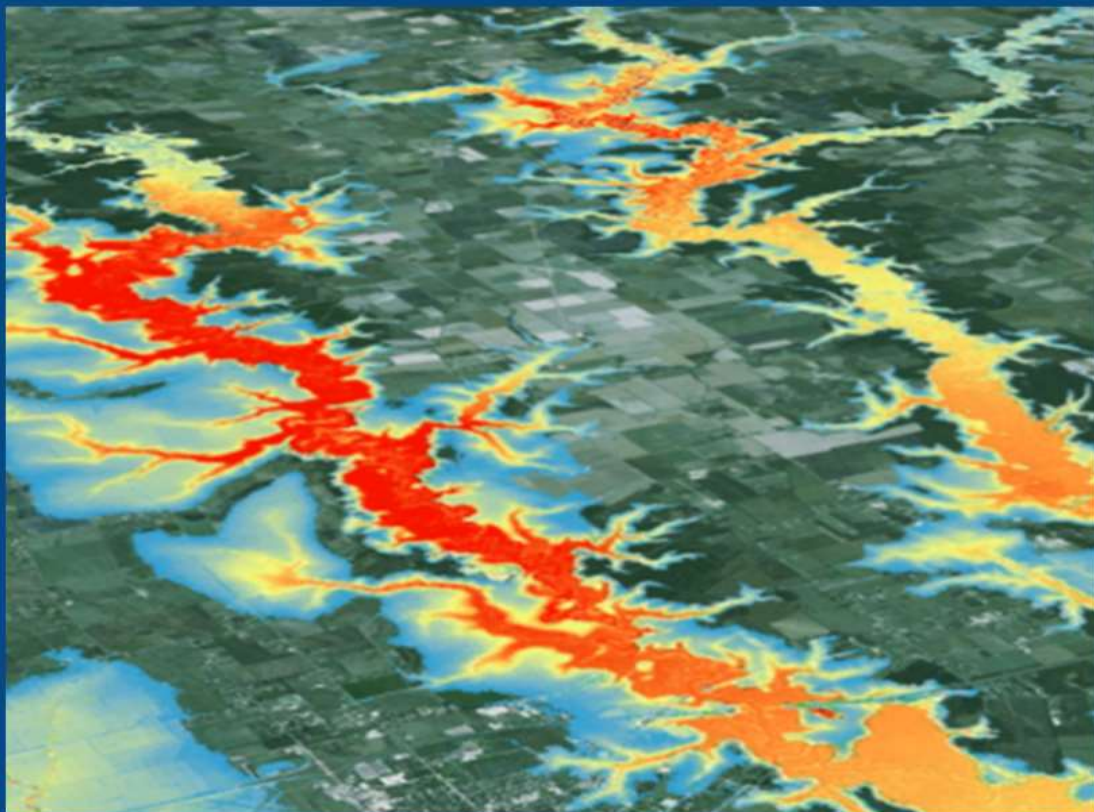


Bare Earth Elevation

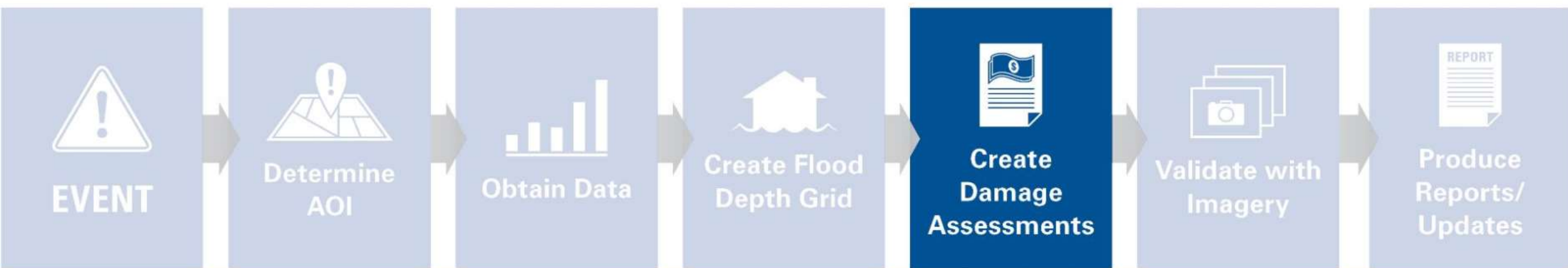


Flood Depth Grid



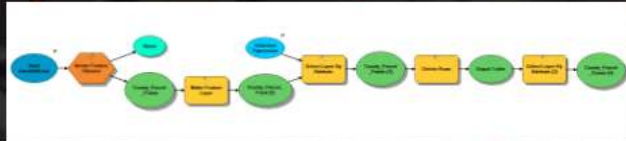


Our Process



Data Manipulation

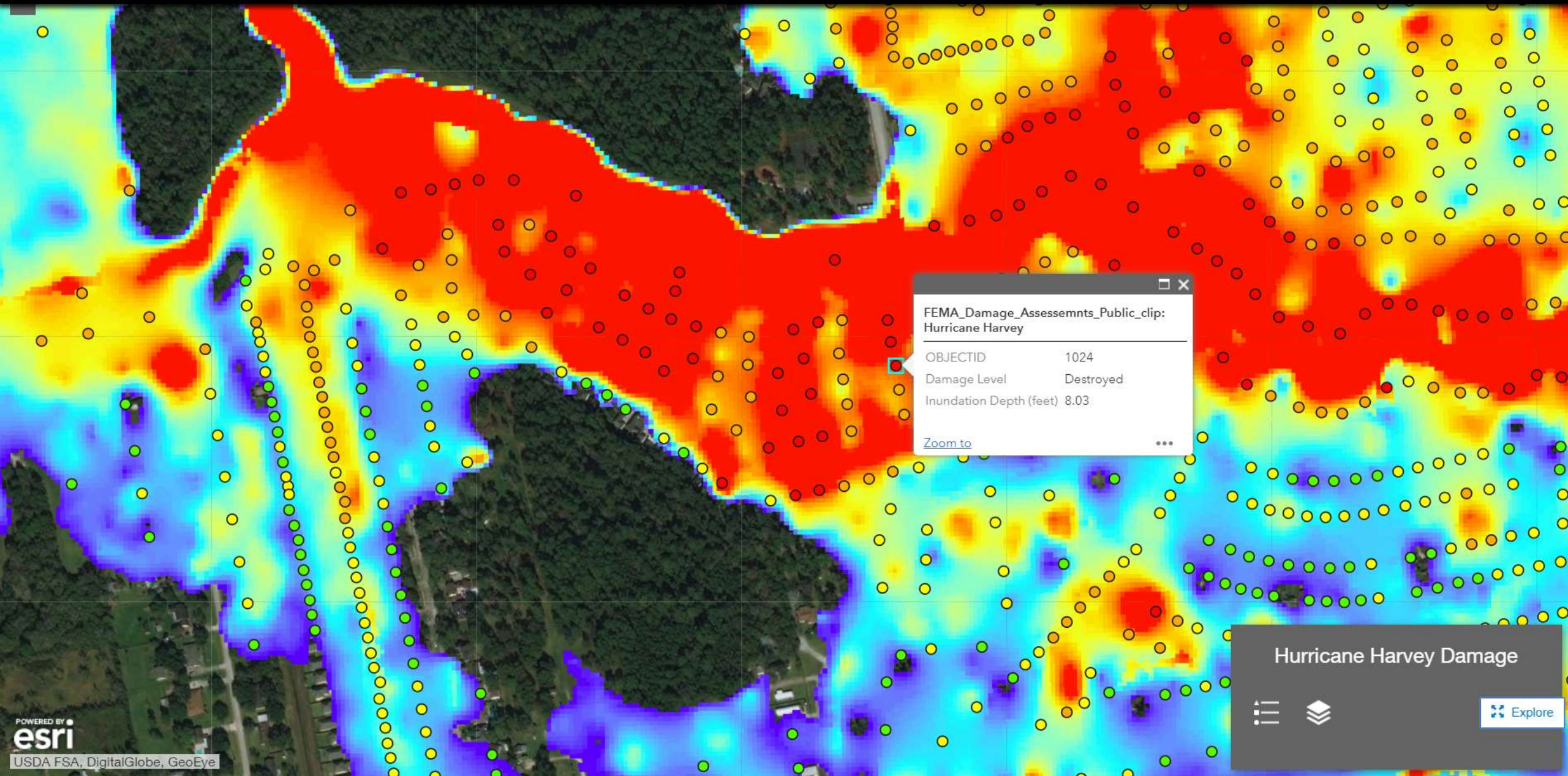
- Remove "vacant" structures
- Normalize schema



- Generalize attributes
- Visual review



TOWNSHIP	SECTION	LATITUDE	LONGITUDE	TYPE_CODE	PCL_CITY	LAND_USE_T	LAND_USE	M_HOME_IND	ZONING
<Null>	<Null>	39.51164	-119.640688	CEN	SPARKS	<Null>	<Null>	<Null>	<Null>
16	16	39.511661	-119.640857	CEN	SPARKS	SFR	163	<Null>	PUD /



Hurricane Harvey Damage

Explore



GEOSPATIAL DAMAGE ASSESSMENTS were
completed within **5 DAYS** 
while traditional housing inspections took
73 DAYS to complete

Our Process





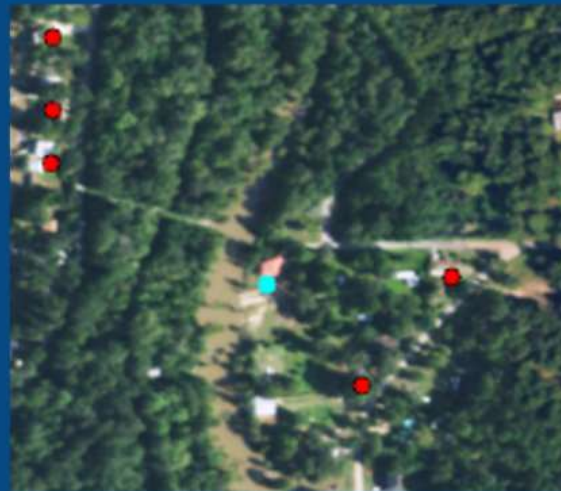
Civil Air Patrol



Pleiades



NOAA



Harvey Damage Assessment



CAP Image

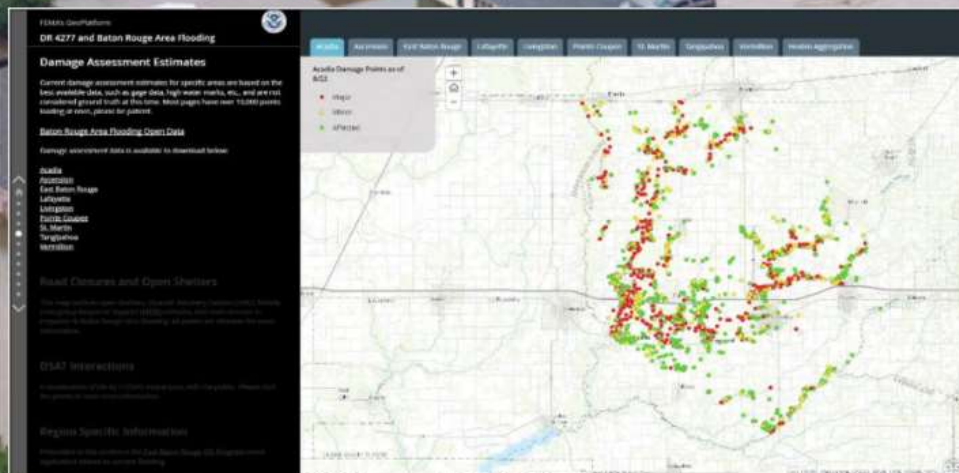


Our Process





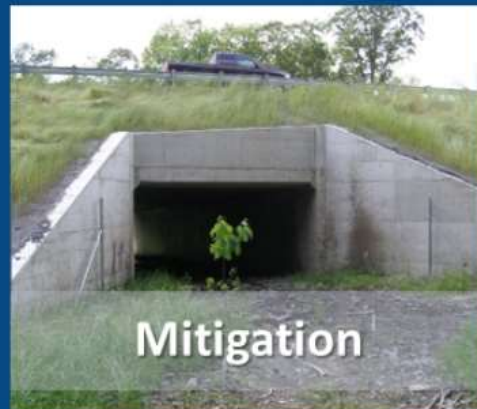
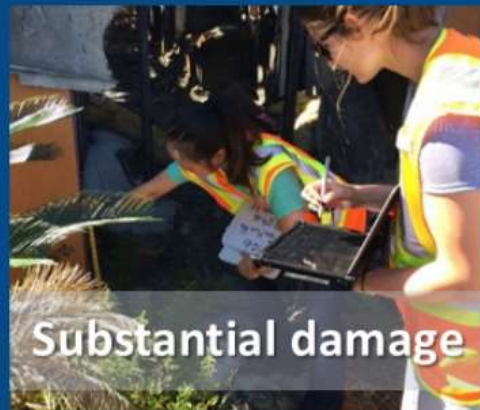
Parish	# Affected Structures (<2' depth)	# Minor Structures (2'-5' depth)	# Major Structure (>5' depth)	Total Impacted Structures	Total Structures
Acadia	4,008	553	84	4,645	25,152
Ascension	12,160	5,691	1,496	19,347	56,273
East Baton Rouge	40,481	21,390	5,997	67,868	176,384
Iberia	101	90	—	191	27,576
Iberville	208	—	—	208	12,361
Jefferson Davis	1,238	595	169	2,000	13,956
Lafayette	3,999	697	107	4,803	87,220
Livingston	21,124	15,408	4,120	40,652	62,898
Pointe Coupee	647	626	183	1,456	22,916
St. Martin	893	399	22	1,314	22,994
Tangipahoa	11,136	4,014	1,235	16,385	42,552
Vermillion	7,672	2,249	95	10,016	25,910
Total	103,655	51,712	13,508	168,885	576,192





More than
\$10.5 MILLION in **EXPEDITED RENTAL ASSISTANCE GRANTS**

provided to more than **12,500 DISASTER SURVIVORS**





Fast and Furious - Geospatial Damage Assessments

