



The Work Map Geoportal

A Tall Drink of Water in a Digital Desert

Chris Doscher
Jordan Williams

June, 2018

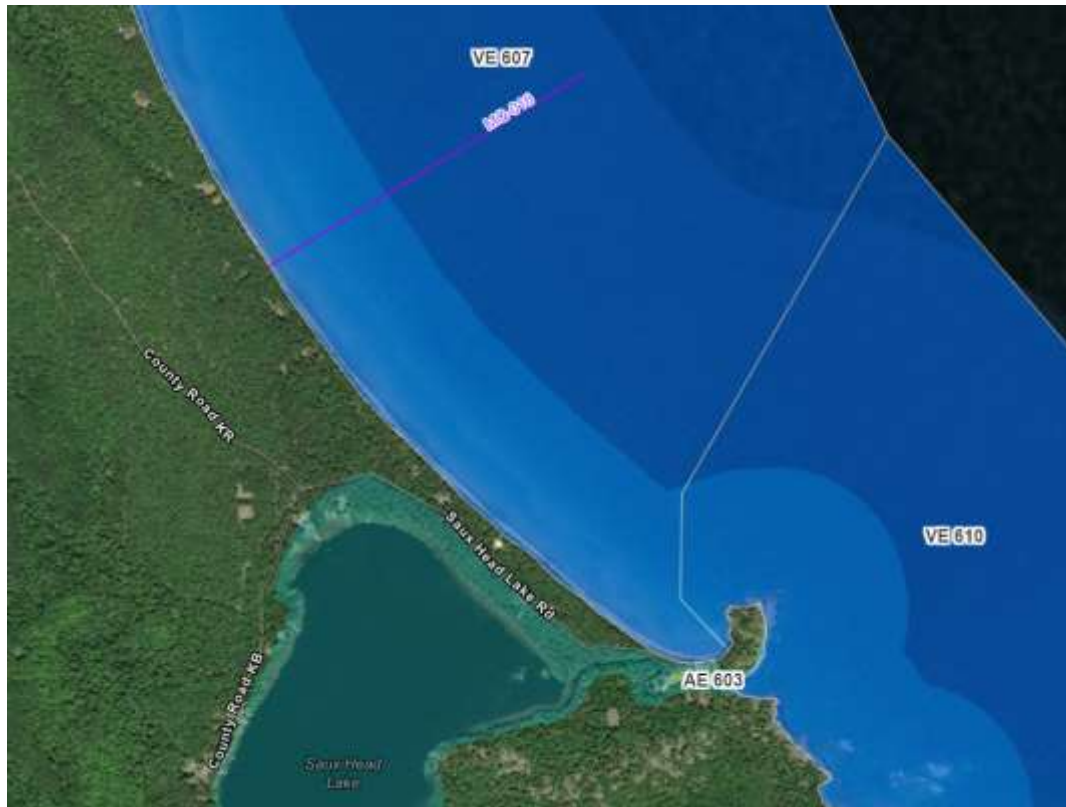


**CDM
Smith**

WATER + ENVIRONMENT + TRANSPORTATION + ENERGY + FACILITIES

What is the Work Map Geoportal?

- Interactive web-based map for viewing and downloading draft flood study results



What is the Work Map Geoportal?

- ArcGIS Online – FEMA Organizational Account
- Service Layer ➡ Web Map ➡ Web App



The banner features the FEMA Department of Homeland Security seal on the left. The text 'FEMA GeoPlatform' is prominently displayed in a large, serif font, with the tagline 'Providing geospatial data and analytics in support of emergency management' below it. In the top right corner, it says 'Visit: FEMA.gov'. At the bottom, there are four square images representing different disaster types: a hurricane, flooded city streets, earthquake damage to a road, and a tornado. Each image has a corresponding label below it. Navigation arrows are visible on the left and right sides of the image row.

Visit: [FEMA.gov](https://www.fema.gov)

FEMA GeoPlatform
Providing geospatial data and analytics in support of emergency management

 Hurricanes and Typhoons

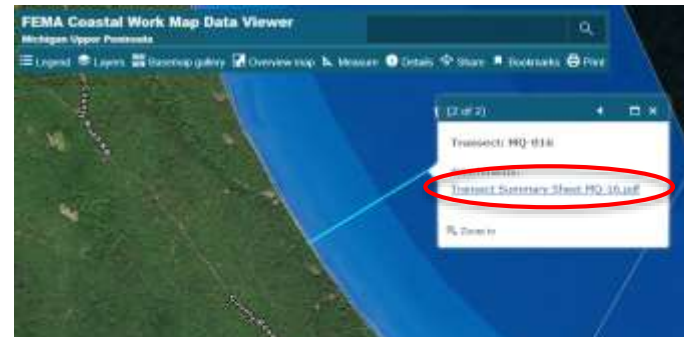
 Flooding

 Earthquakes

 Tornadoes

Data Sharing

- Many map features can be selected to download additional data such as:
 - Transect Summary Sheets
 - Work Map Pages
 - Shapefiles
 - Coastal Summary Sheets

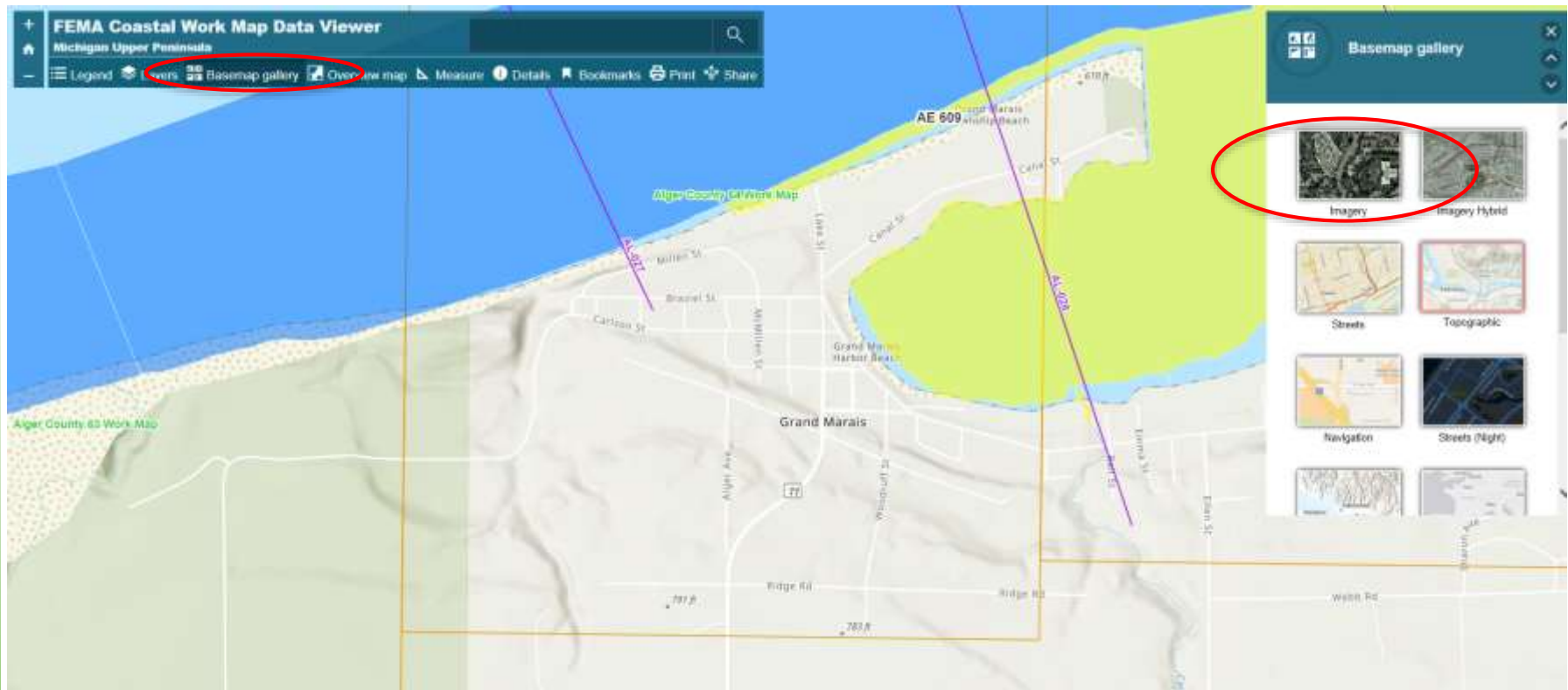


Data Sharing

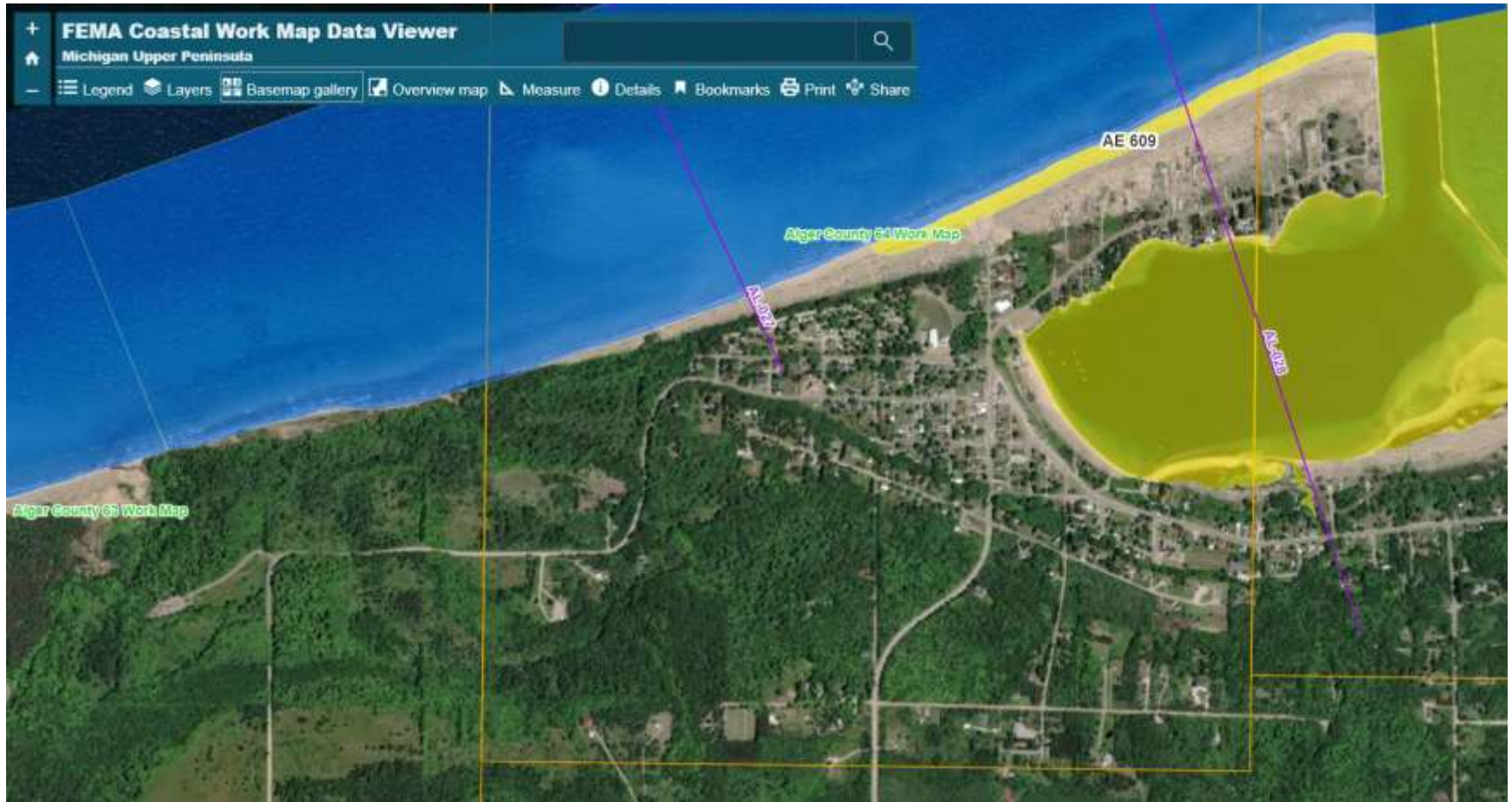
- Share links directly to areas of interest
- No need for sharing scans of large printouts
- Do the new VE zones pose a risk to the trailer park just off the beach?
- <http://arcg.is/uWreL>



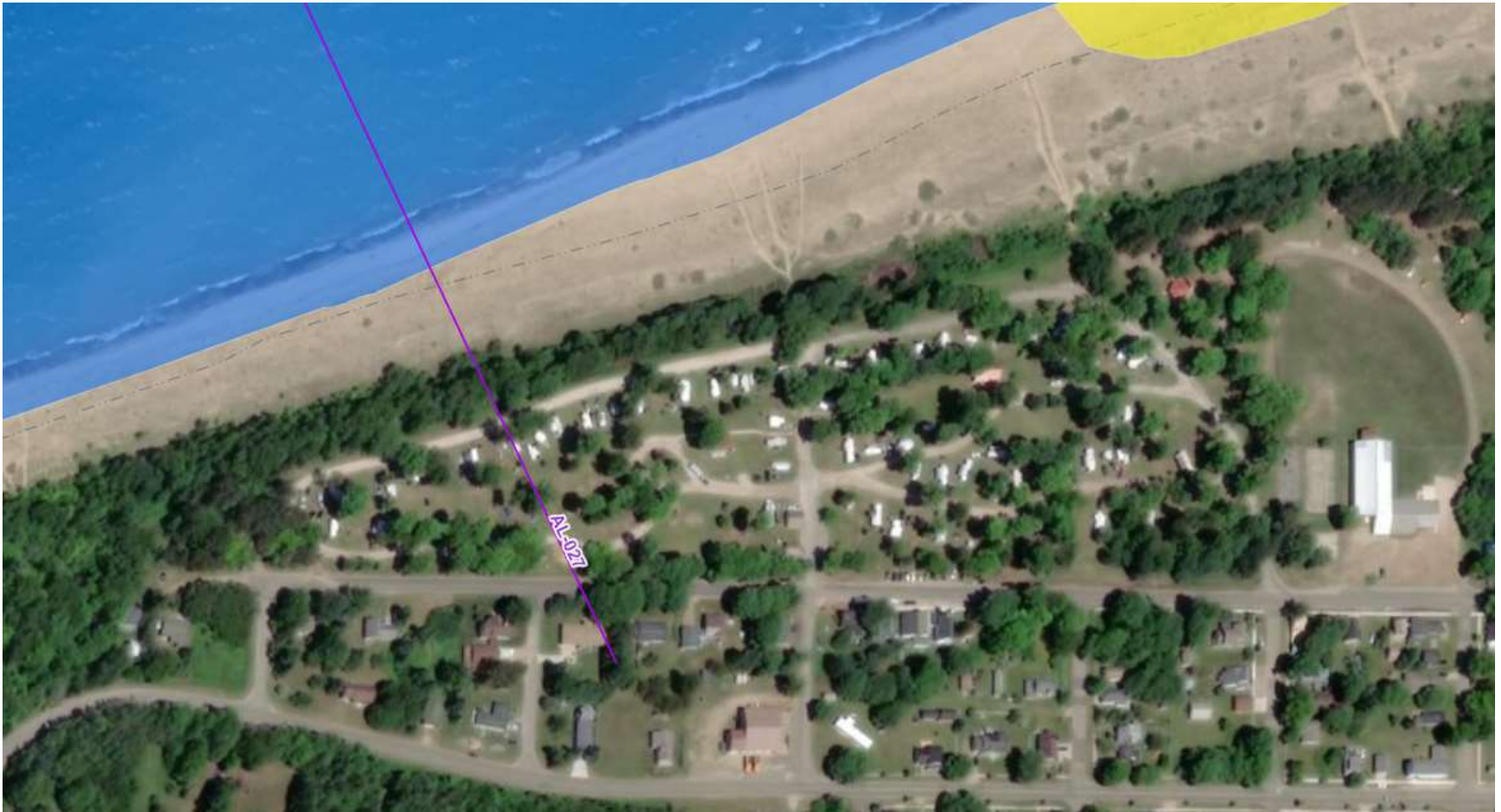
Data Sharing



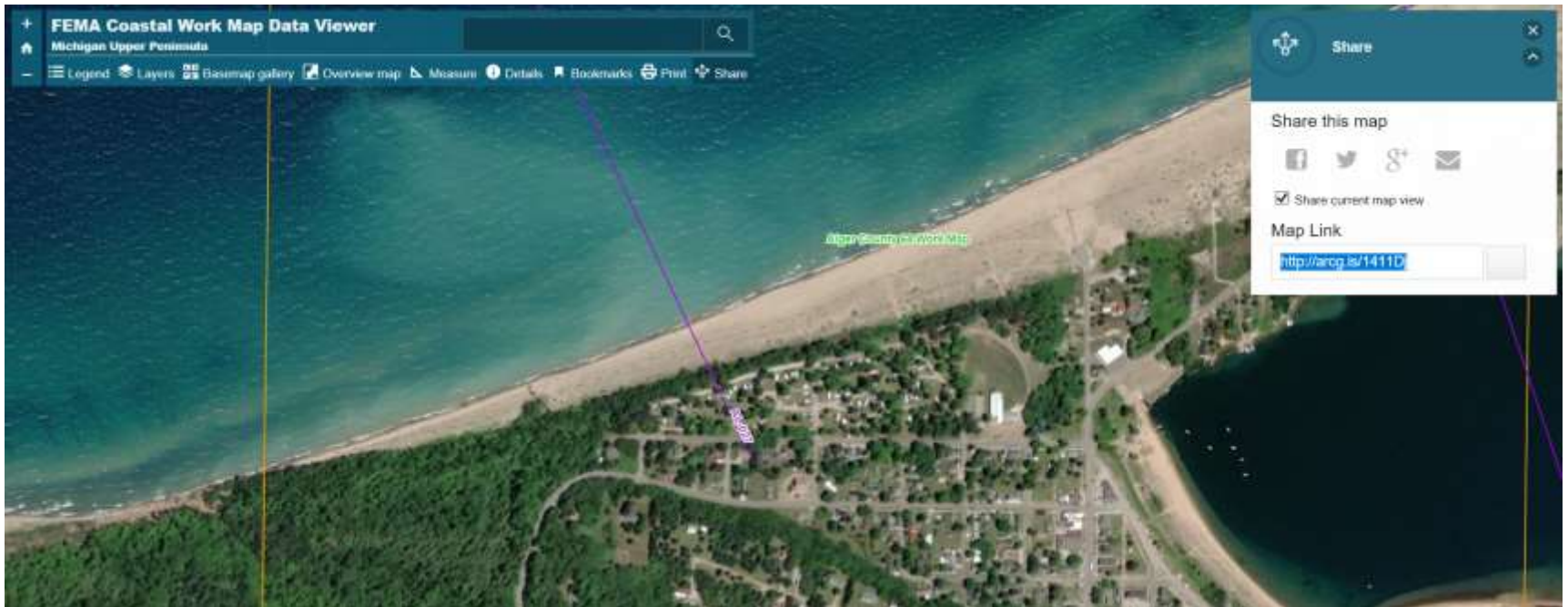
Data Sharing



Data Sharing



Data Sharing





Implementation

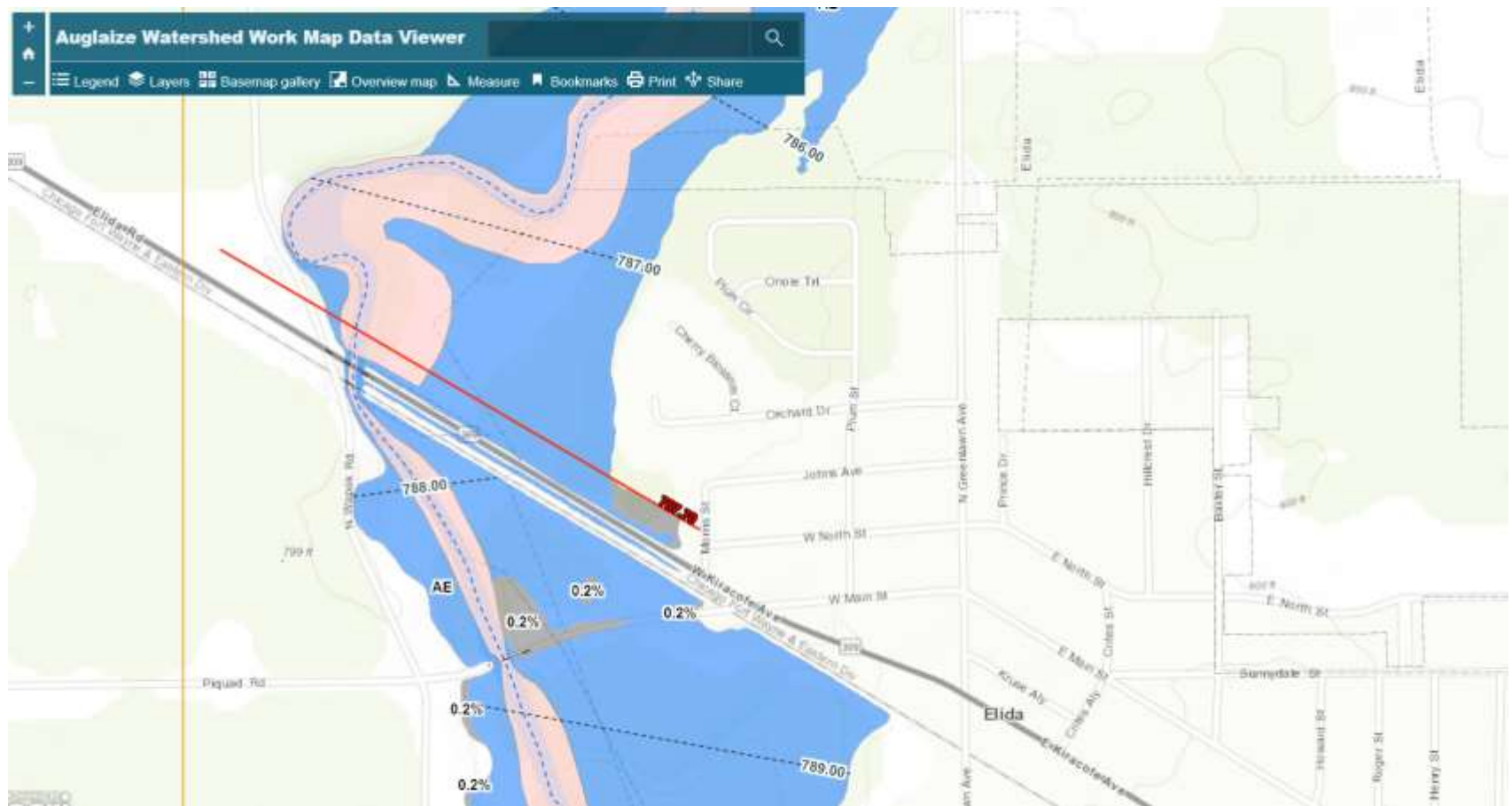
Implementation

- Need access to FEMA AGOL account
- Quick and easy to learn
- Requires no additional software
- Upload and launch a county in 1-2 Hr

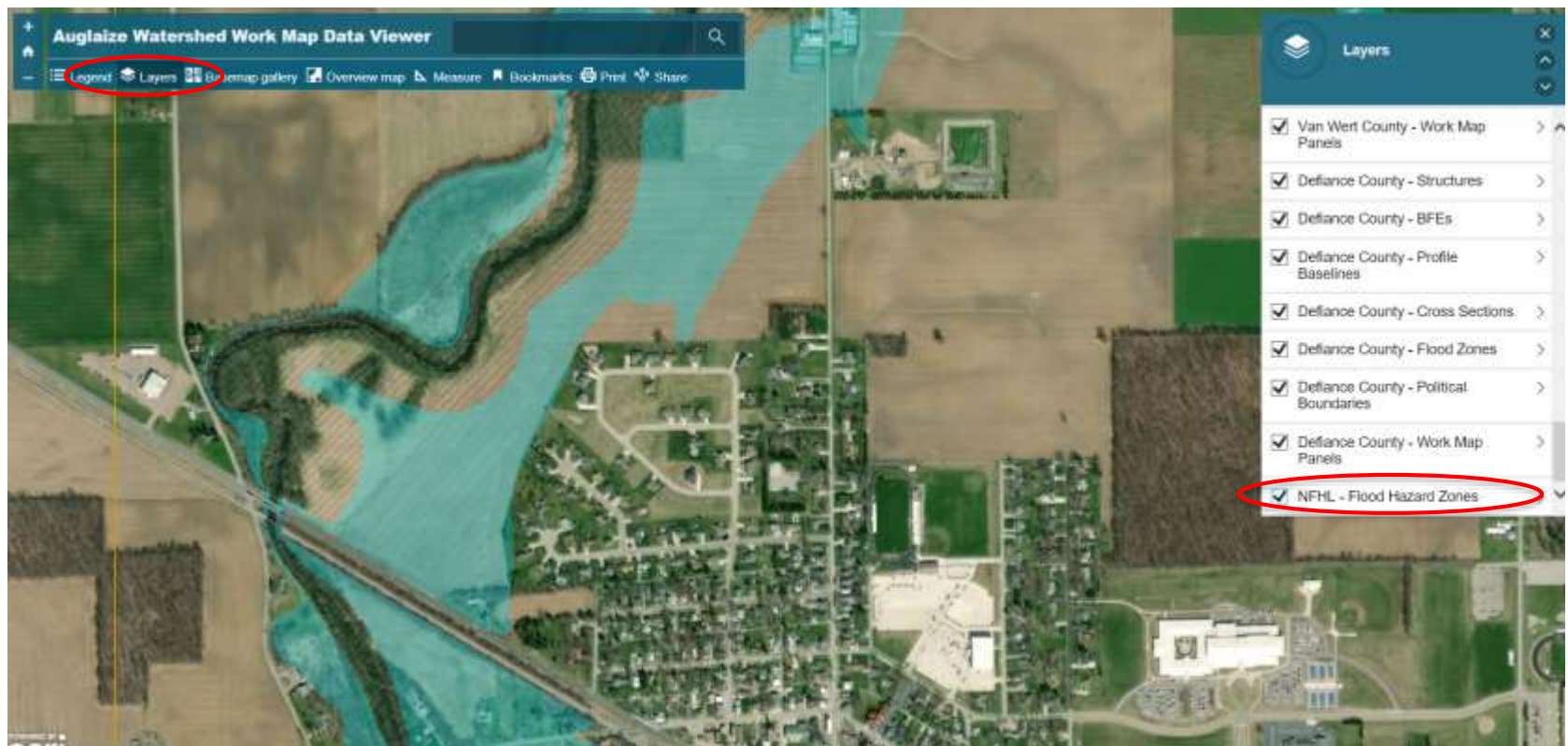
Demo

- Auglaize Watershed
 - <http://arcg.is/1S0WeD>
- Great Lakes Coastal
 - <http://arcg.is/0bP9zL>

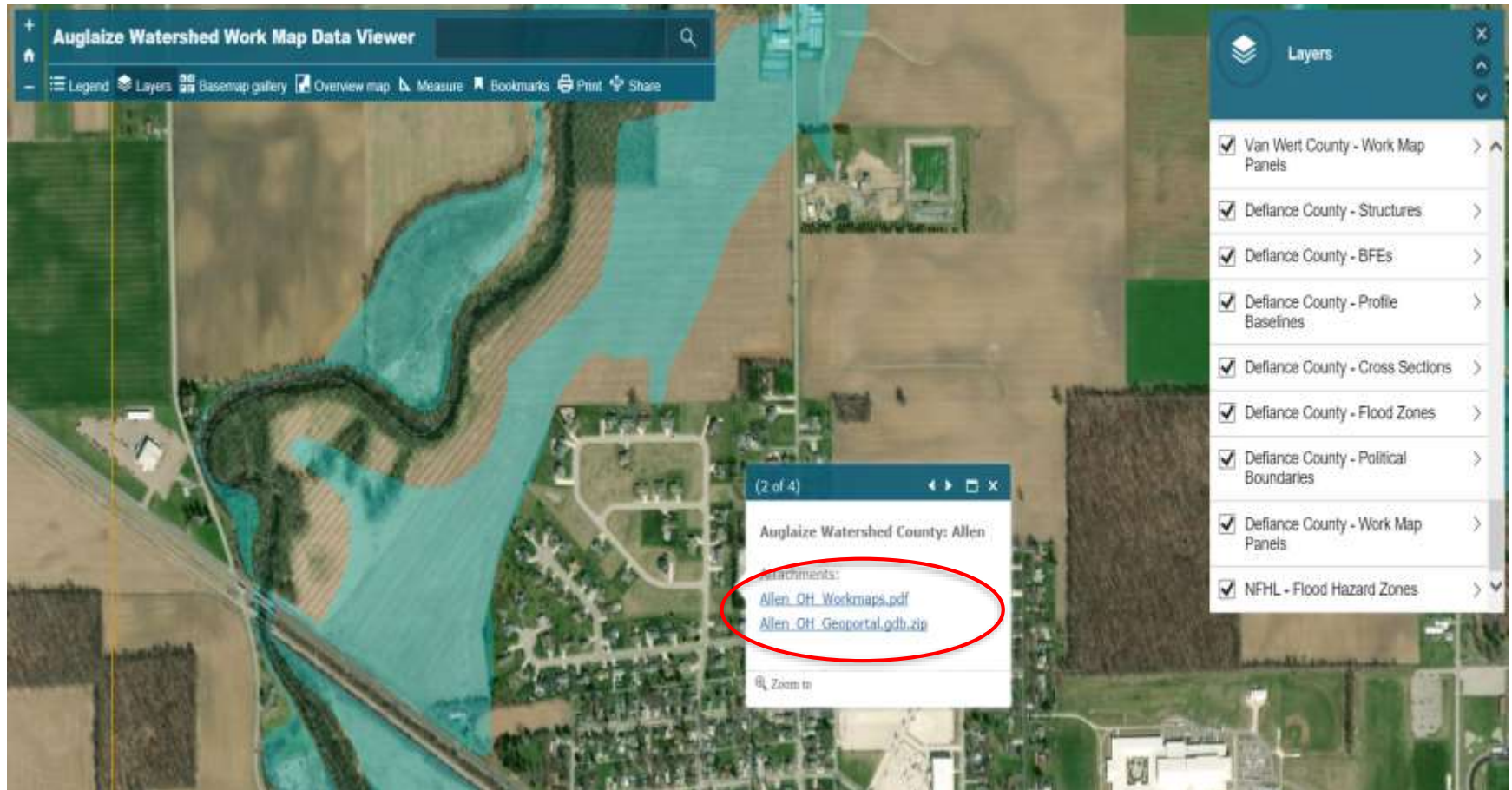
Demo – Auglaize Watershed



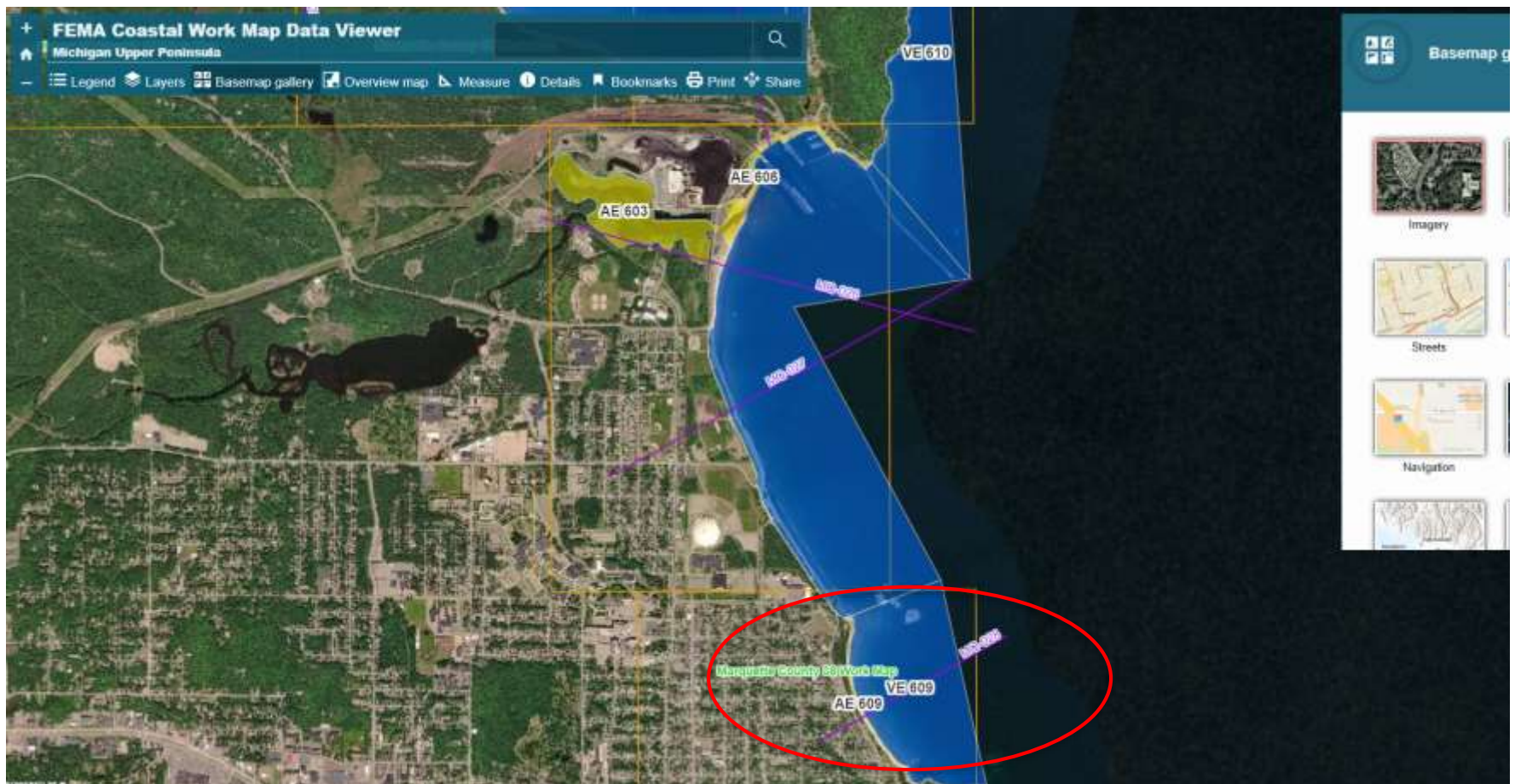
Demo – Auglaize Watershed



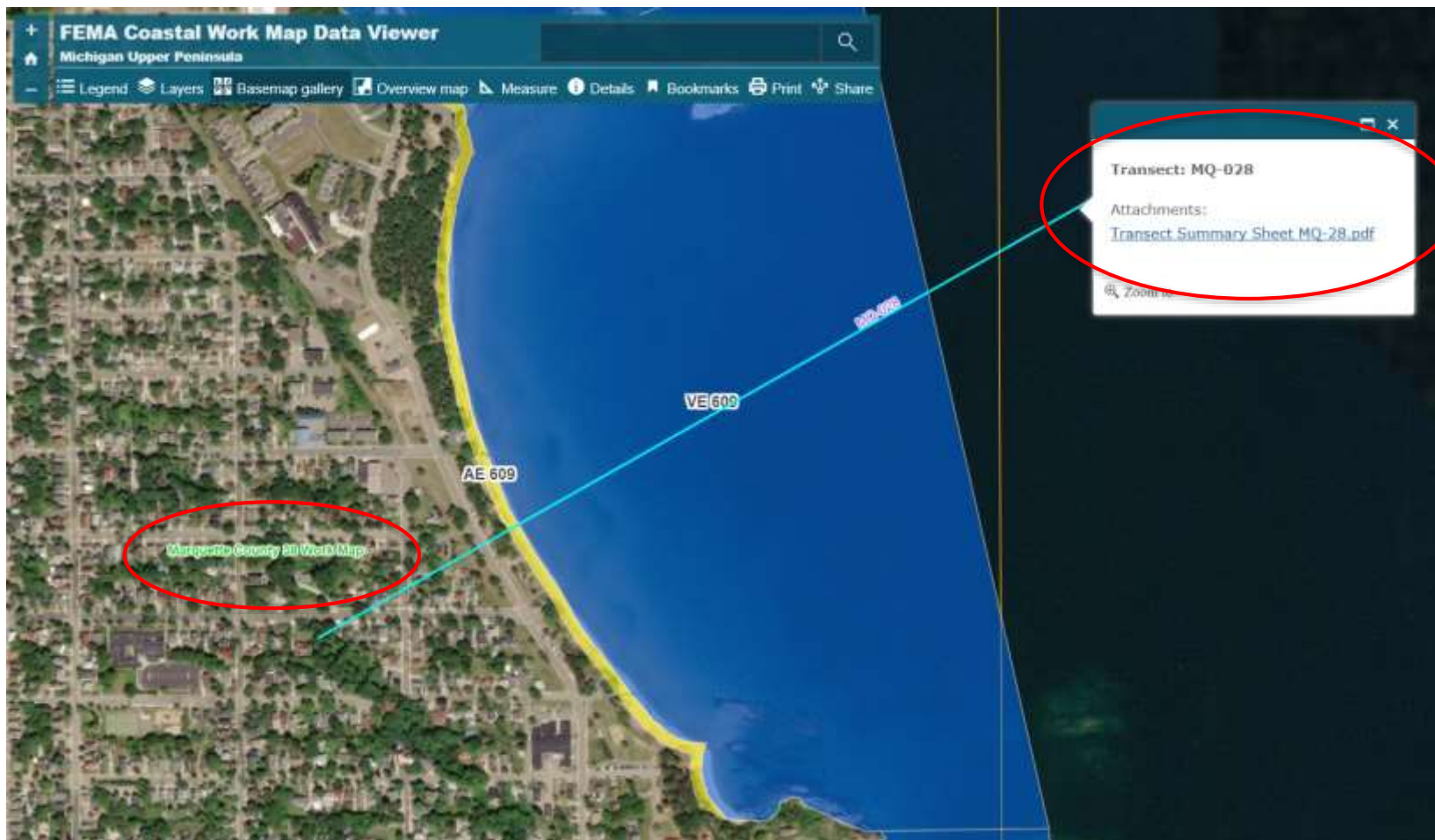
Demo – Auglaize Watershed



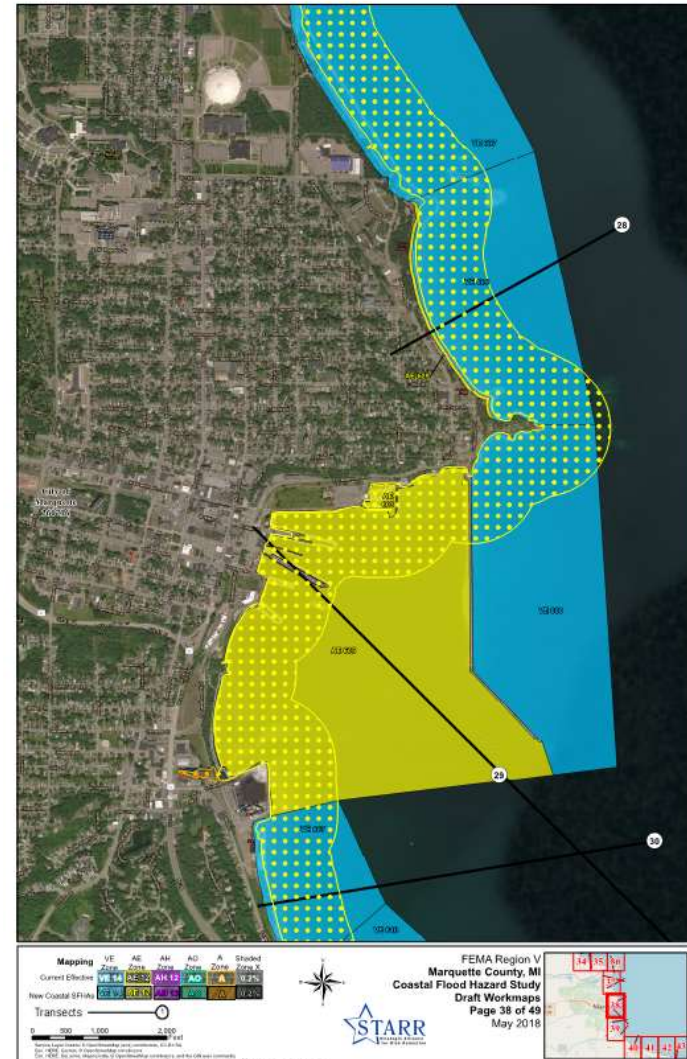
Demo – Great Lakes Coastal



Demo – Great Lakes Coastal



Demo – Great Lakes Coastal



Benefits to Stakeholder Outreach

- Provide data prior to meeting
- Easy to use for non-technical audience
- Allows easy sharing after the meeting
- Allows live interaction with data during the meeting



Benefits to Stakeholder Outreach

FEMA Coastal Work Map Data Viewer User Guide

Project Background

The Federal Emergency Management Agency (FEMA) is releasing draft work maps for coastal communities along the Great Lakes. These products display the results of FEMA's comprehensive storm and wind study of the Great Lakes basin. The intent of this release is to help community officials understand current flood risk and potential flood insurance requirements as well as provide them with an opportunity to review the findings prior to their inclusion within Preliminary Flood Insurance Rate Maps (FIRMs).

Leveraging FEMA's GeoPlatform, this information has been organized and shared with community partners through an interactive ArcGIS online web map viewer. This document provides an overview of how to navigate, visualize, and access the data and information within this tool.

Web links Great Lakes Coastal Flood Study Update

The following table lists web locations of the updates for these counties. The GeoPlatform link will take you to the ArcGIS web application. Please use this document to help assist you while navigating through the web application (See Table 1).

County	GeoPlatform link
Cook County	http://arcg.is/060Krb
Lake County	http://arcg.is/1aPyv
St. Louis County	http://arcg.is/05Knle

Table 1 - Coastal Workmap GeoPlatform web links

Viewing the Coastal Workmap via FEMA GeoPlatform

To open the FEMA Work Map Data Viewer for a county referenced in the table above follow the GeoPlatform link in the adjacent column for that county and your screen should appear similar to Figure 1 below.

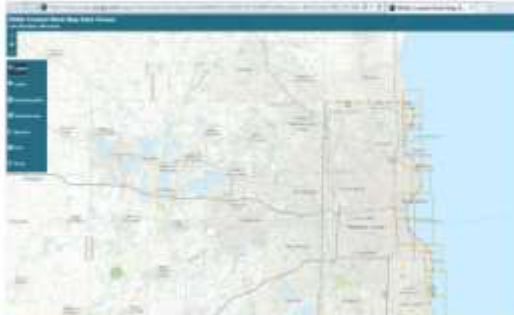


Figure 1: Overview

1. Viewing the Map Layers

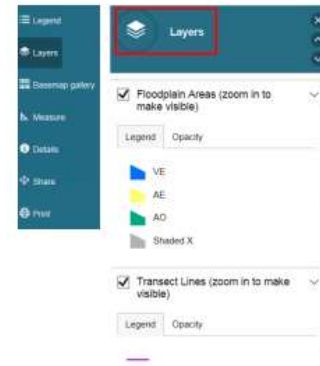


Figure 2: Layers – The available map layers are listed above

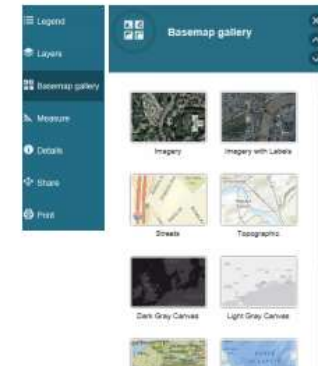


Figure 3: Basemap Gallery

To view the list of layers in the map, click on the "Layers" button (See Figure 2). Here you can turn layers on and off, adjust opacity and view layer symbology.

To toggle a layer on or off, simply check the box to the left of the layer name. Note, some layers might not turn on initially and will appear grayed out or unavailable. That is because a visible scale extent has been set which limits view in which a layer will draw/display. This capability is enabled to prevent map clutter as well as improve navigation and map performance. Once you zoom into the predefined scale, the layer will become available to you.

To view and change basemaps, click the "Basemap gallery" button. This button allows you to change the basemap or background display. There are approximately 10 different maps to choose from and they include various street, topographic, or imagery maps. (See Figure 3)

2. Viewing the Map Legend

To access the map legend, click on the "Legend" button to view the active map layers (See Figure 4).



Figure 4: Legend