



# Association of State Floodplain Managers 43<sup>rd</sup> Annual Conference

**Jeffrey Giering, CFM**

State Hazard Mitigation Officer  
Louisiana Governor's Office of Homeland  
Security and Emergency Preparedness

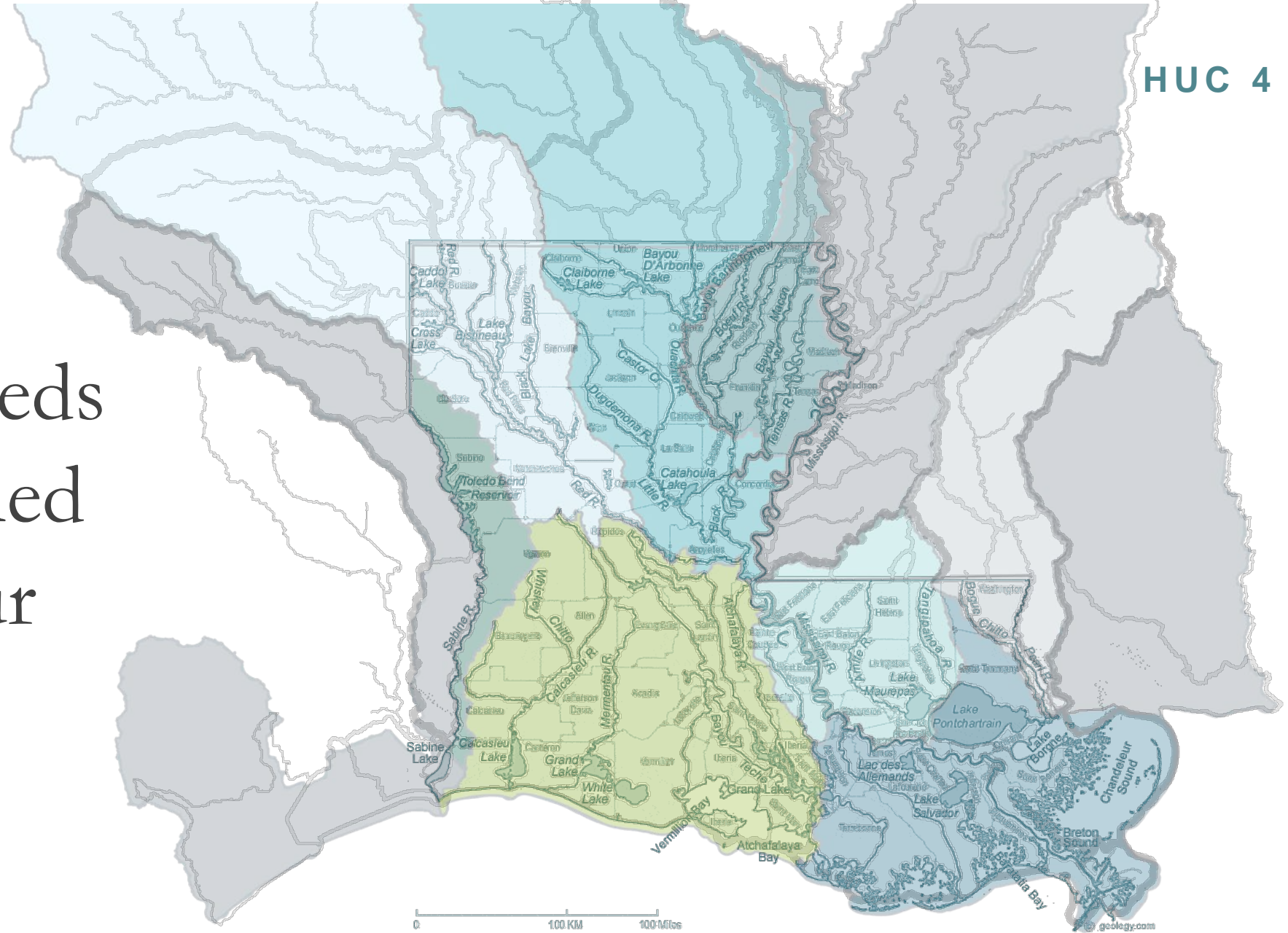
**May 21, 2019**

LOUISIANA  
**WATERSHED**  
INITIATIVE

working together for sustainability and resilience

# Louisiana's Watersheds

Our watersheds are not defined by any of our political boundaries.







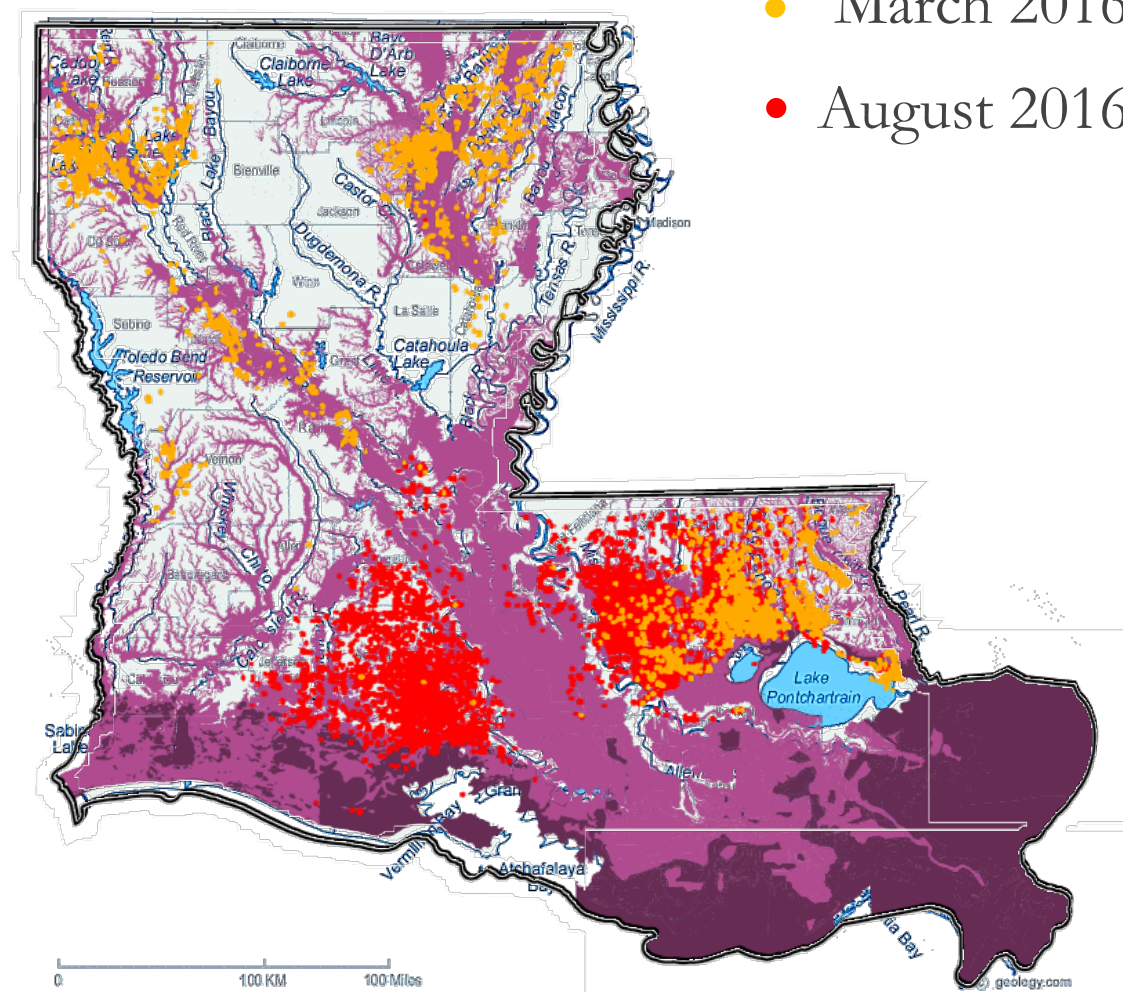
# 2016 March & August Floods

Combined total of  
145,000 structures  
impacted

- March = 21 inches
- August = 30 inches

## Impacted Structures

- March 2016 Floods
- August 2016 Floods







“It’s harder.

It requires more  
work.

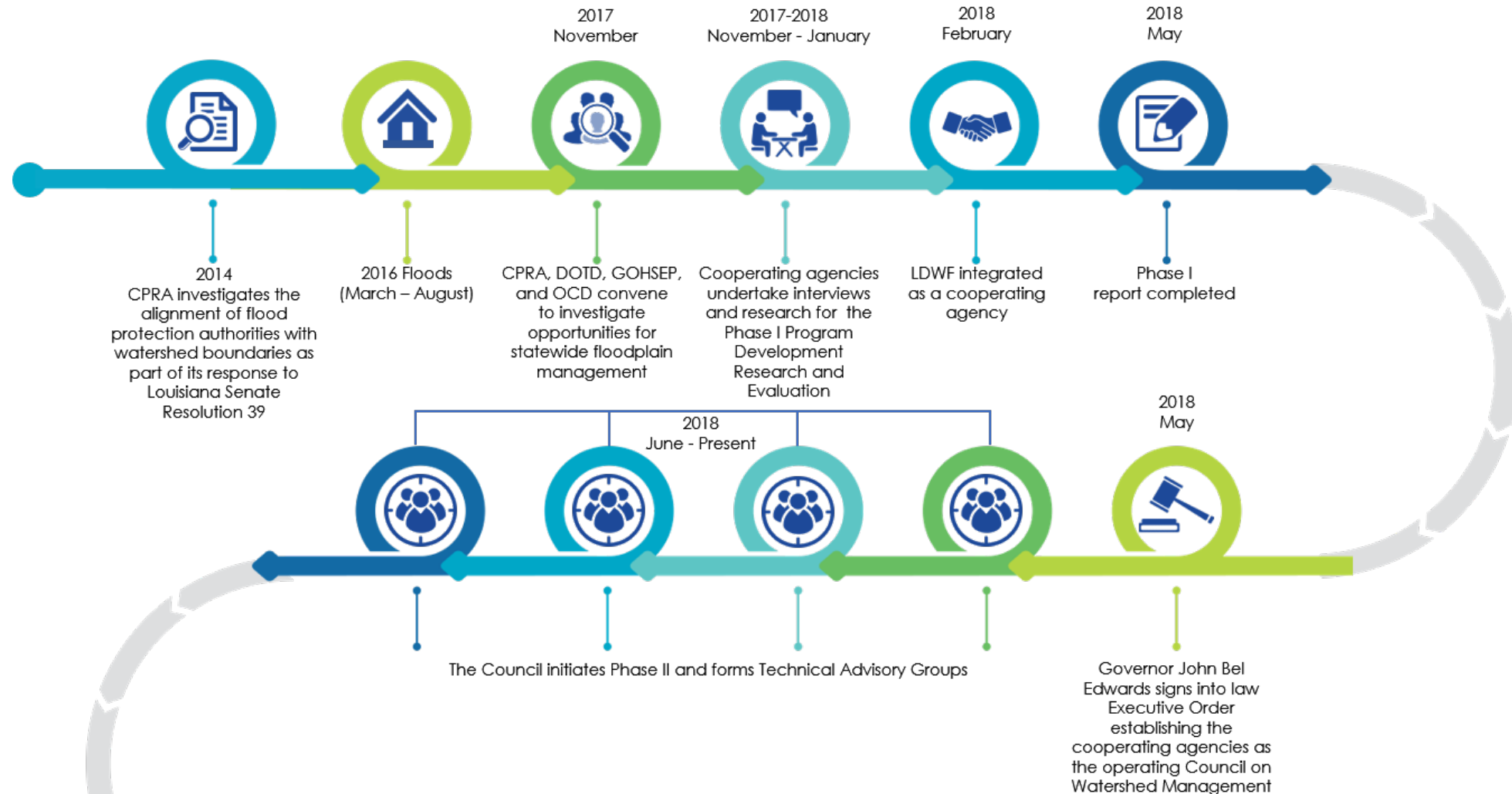
It’s politically risky,  
but it is

**THE RIGHT  
THING TO DO.”**

*Governor John Bel Edwards*



# Louisiana Watershed Initiative Timeline





# How is the Louisiana Watershed Initiative different?

Utilizes recovery dollars in a *proactive* rather than *reactive* approach.

The goal is to improve water management *before* the next disaster and develop an enduring program for water management

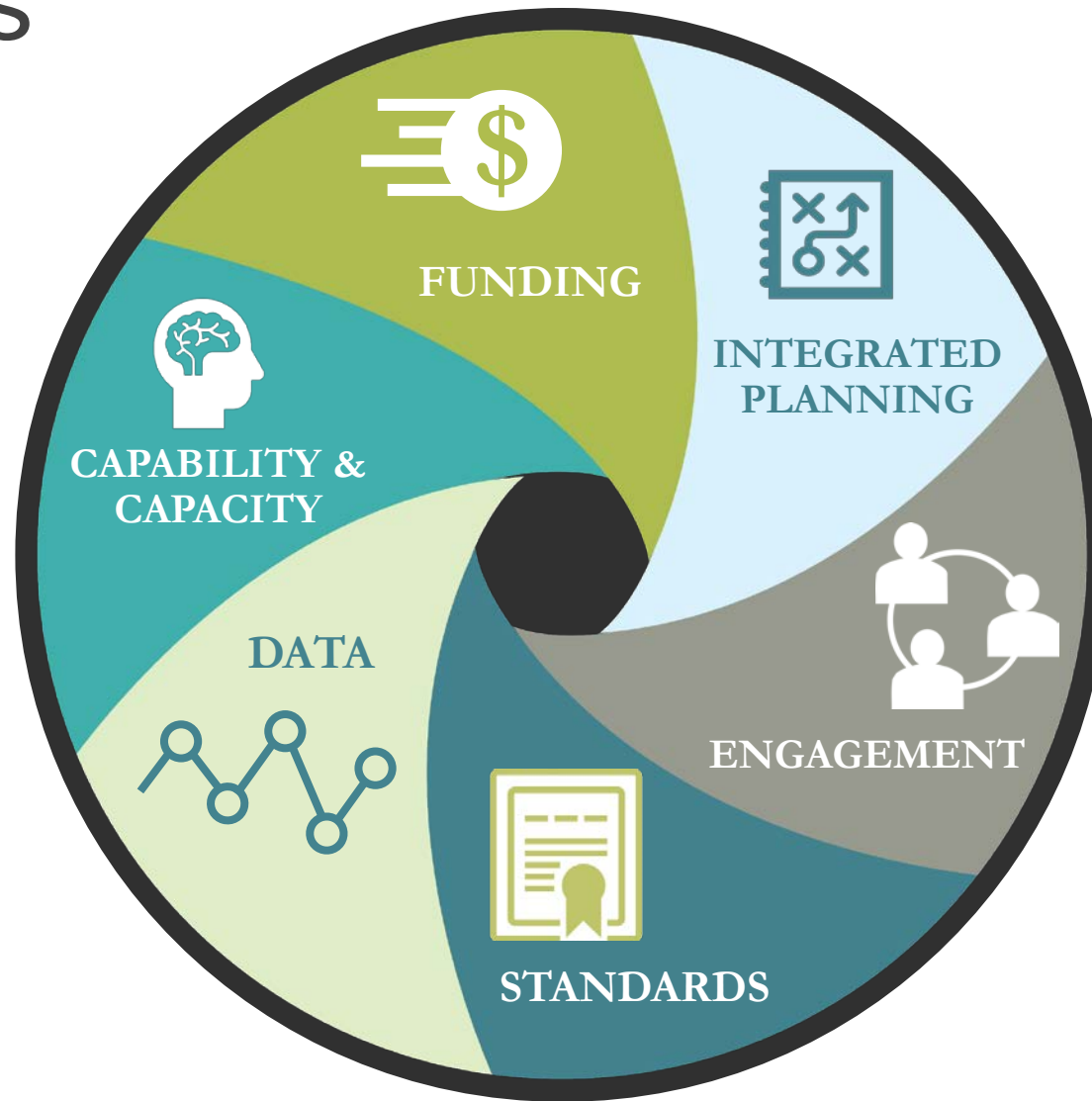


LOUISIANA  
**WATERSHED**  
INITIATIVE

working together for sustainability and resilience

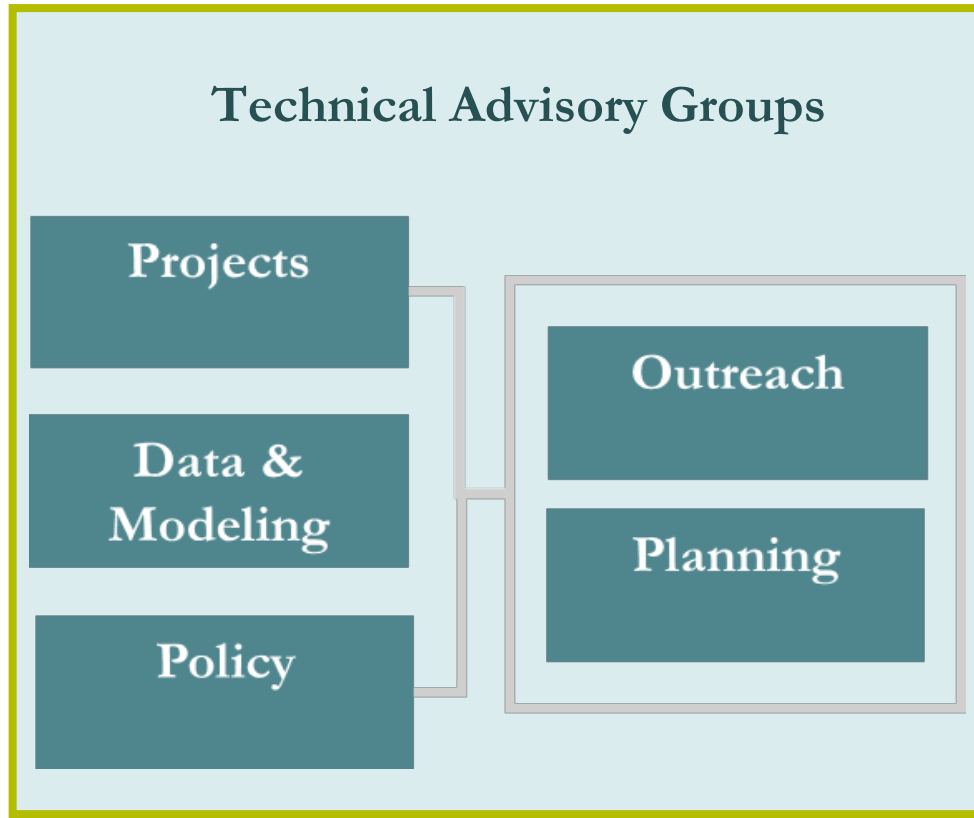


# Strategic Areas of Focus





The Council is supported by Technical Advisory Groups (TAGs) who ensure integration of stakeholder input and transparency of process



TAGs are working to:

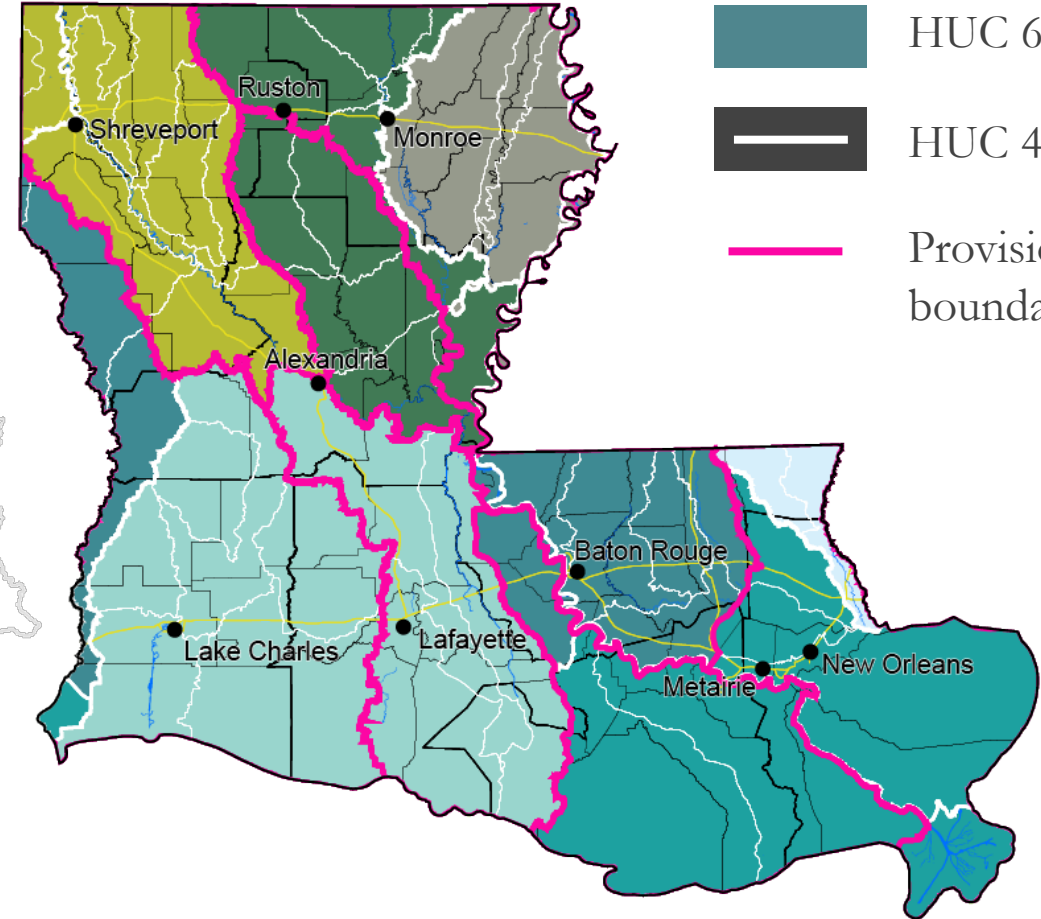
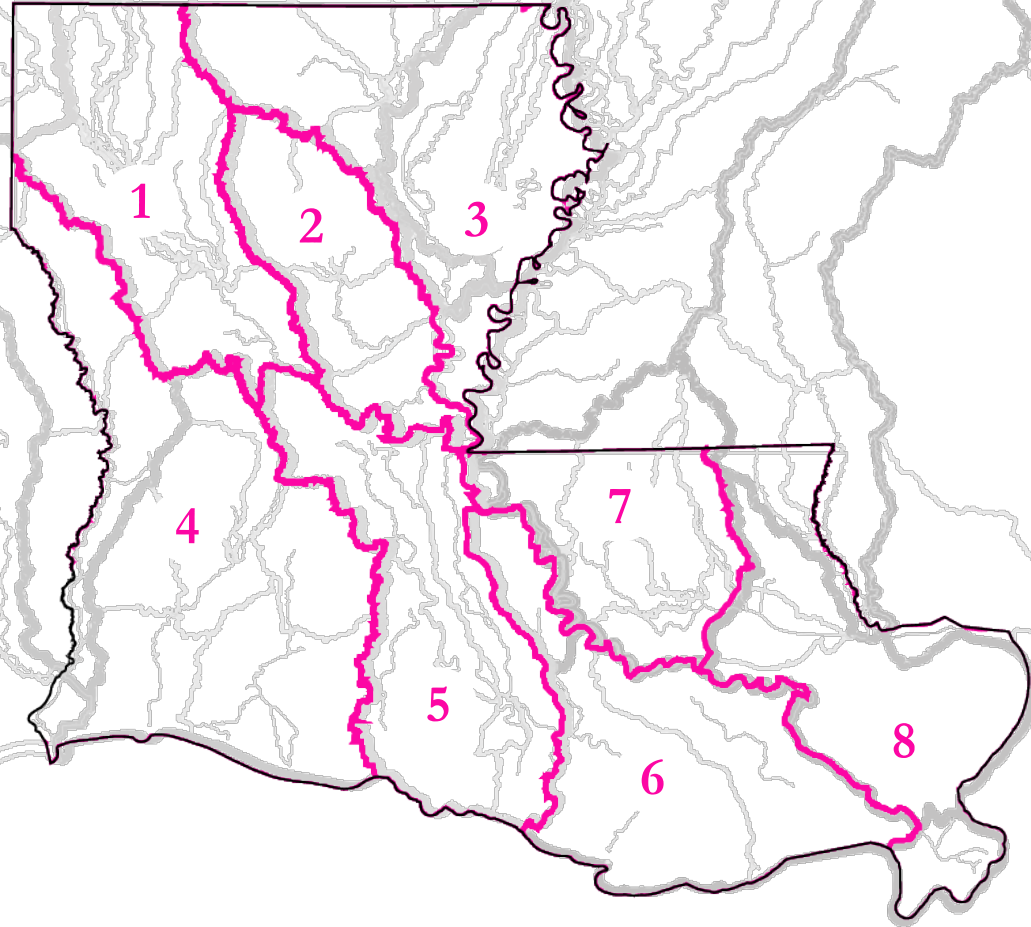
ALIGNING THE EXISTING PROGRAMS,  
POLICIES, PRACTICES WITHIN  
LOUISIANA WITH MISSION AND GOALS  
OF THE LWI

**SUPPORT FROM:**

- SUBJECT MATTER EXPERTS
  - ACADEMIA
  - RESEARCH
- PRIVATE SECTOR
- STAKEHOLDERS



# PROVISIONAL REGIONAL GEOGRAPHIC BOUNDARIES

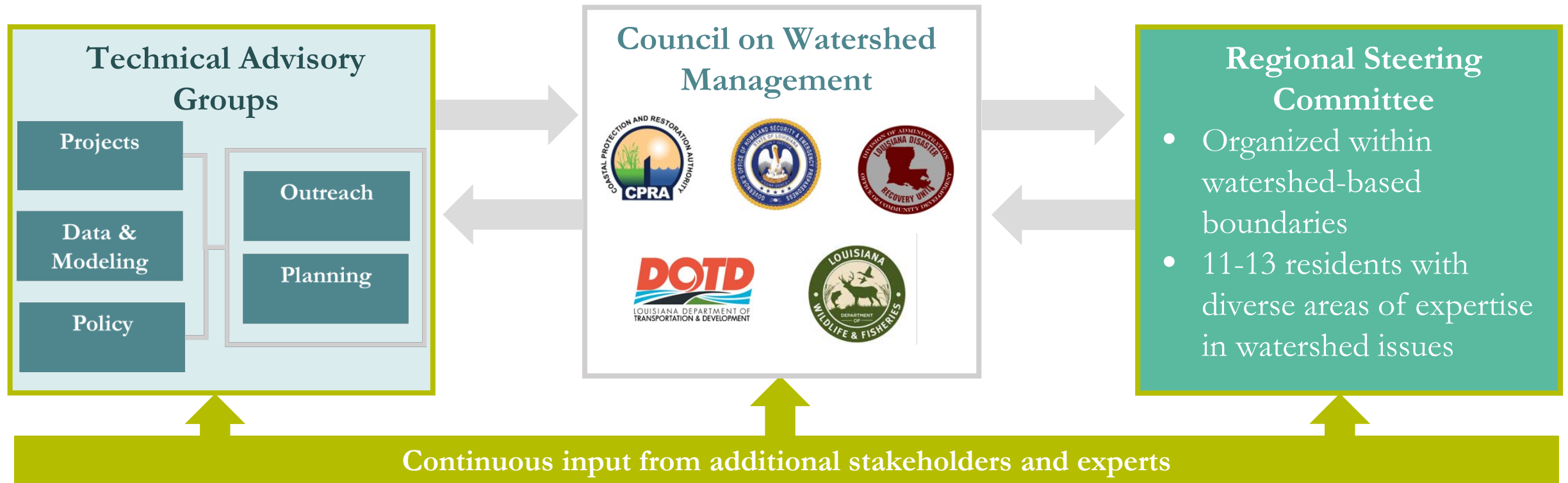


- Parish boundaries
- HUC 8
- HUC 6
- HUC 4
- Provisional region boundaries



# Provisional Regional Steering Committees

*Sharing responsibility for resilient decision-making and implementation*





# Next steps

*Ongoing coordination with locals and the State to complete:*

**Statewide  
Modeling  
Procurement  
Strategy**

**2019  
Engagement  
Strategy**

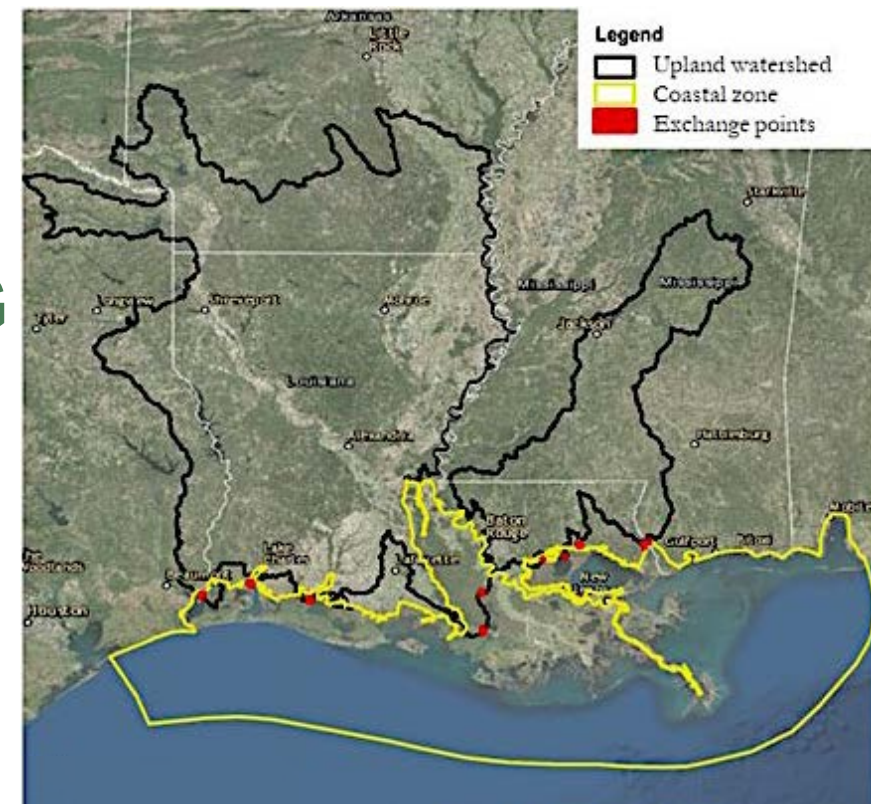
**Project  
Evaluation  
Criteria & Round  
1 Application**



# Overall Approach

## STATEWIDE DATA & MODELING

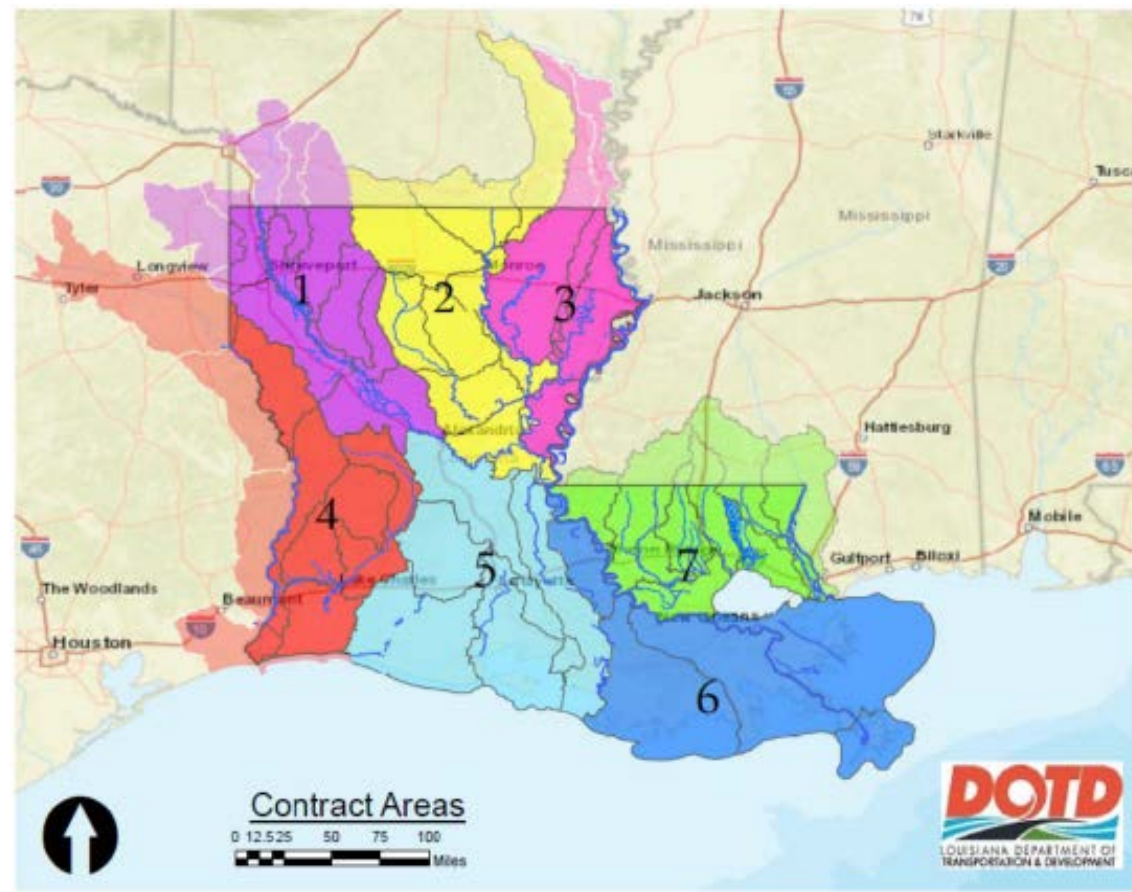
- Pilot model for the Amite River Basin
- Enhanced data inputs: rain and stream gauges, LiDAR, etc.
- Expert leadership on modeling design, maintenance, and usage/storage
- Predictive, contiguous modeling framework
  - models will “talk to each other”



# Statewide Modeling Framework

## STRATEGY AND SEQUENCE

- DOTD will facilitate procurement and contract management
- Advertisements are posted on DOTD's website
- Regional stakeholders & agencies able to provide input in accordance with DOTD's procurement process
- Models sequenced around watershed boundaries in accordance with data availability



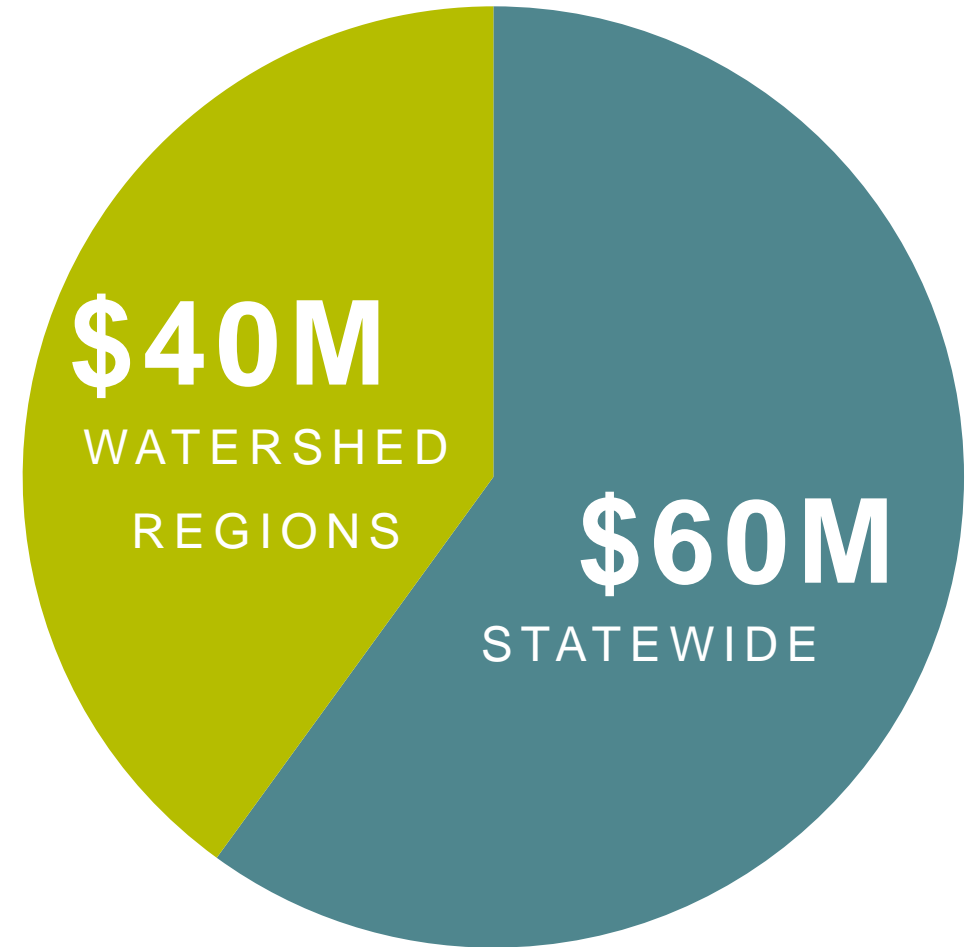


# Round 1 Funding Opportunity (**Proposed**)

COOPERATIVE

COMPETITIVE

PROCESS



**PENDING HUD GUIDANCE**

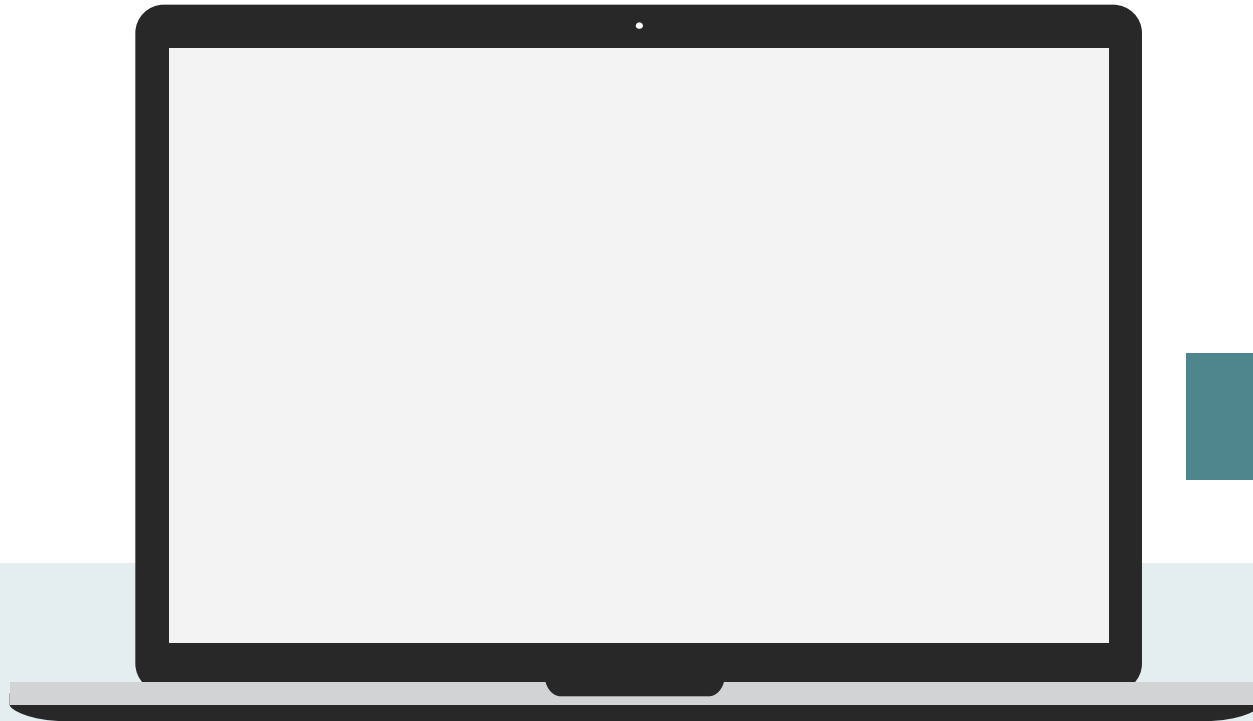


 @LAWATERSHEDINITIATIVE

 @LAWATERSHED

 WATERSHED@LA.GOV

# Thank You



**WATERSHED.LA.GOV**