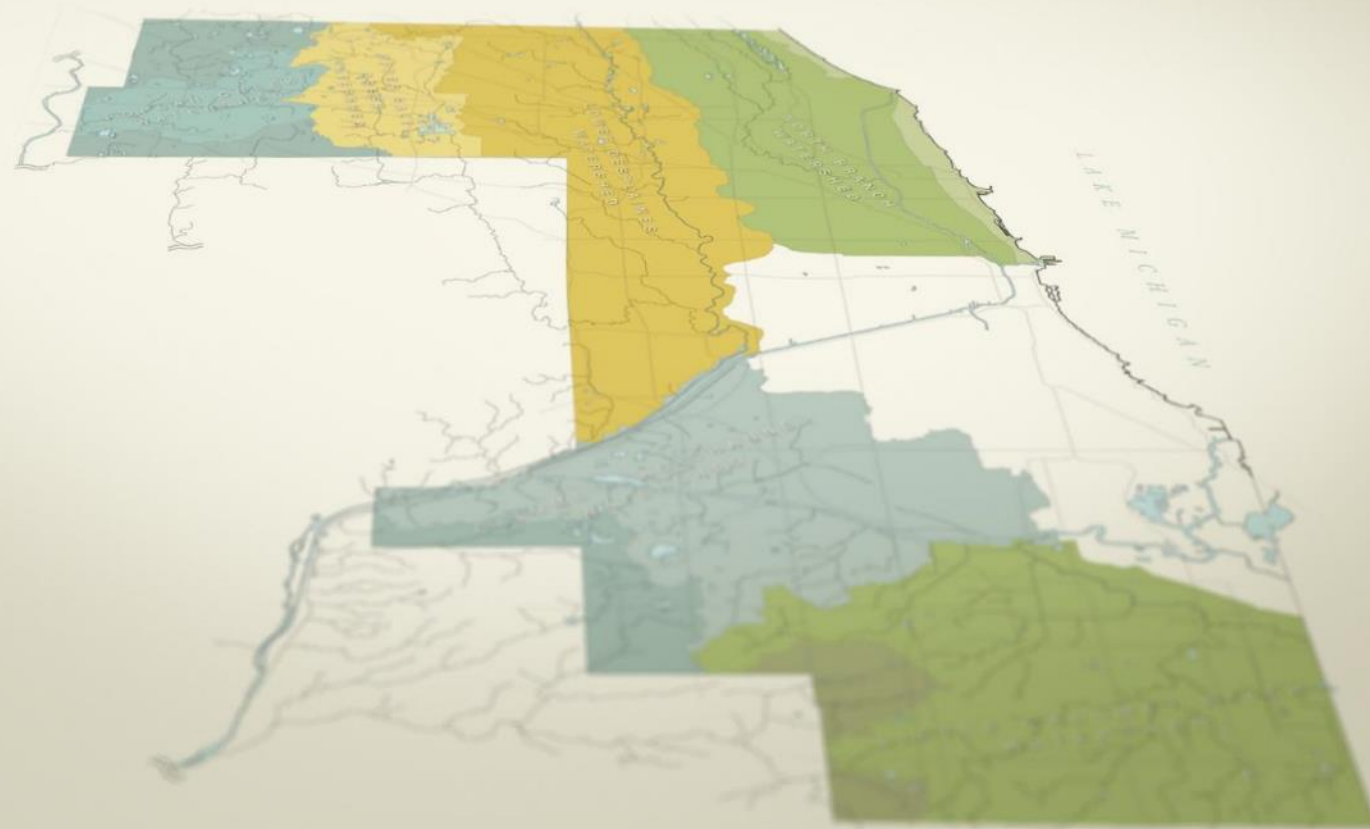


Robbins: Reimagining Stormwater Investment



- *Metropolitan Water Reclamation District of Greater Chicago*
- Richard Fisher, PE



MWRD – Our Mission

Protect Drinking Water Supply



Prevent CSOs to Waterways



Manage and Treat Wastewater

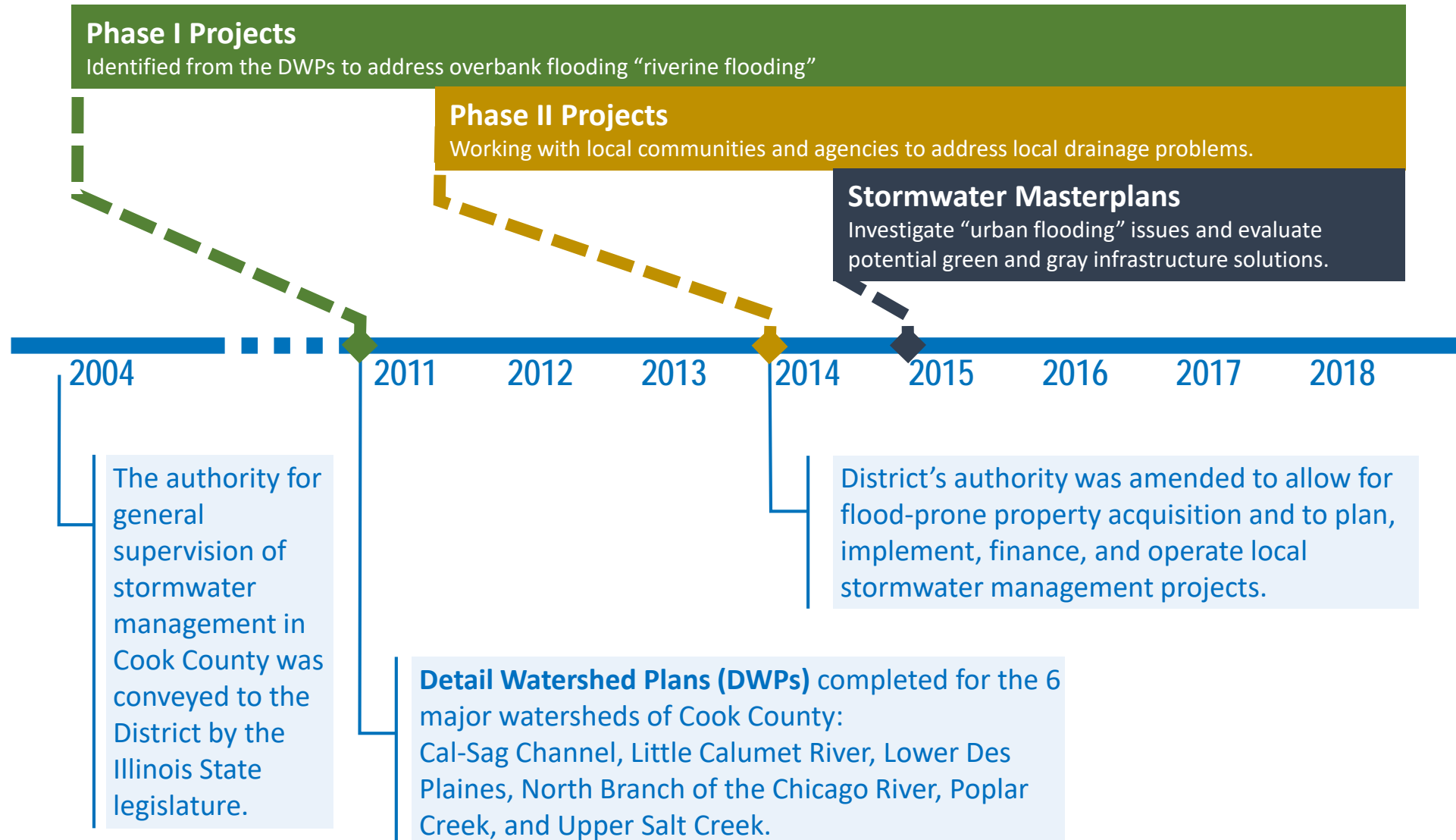


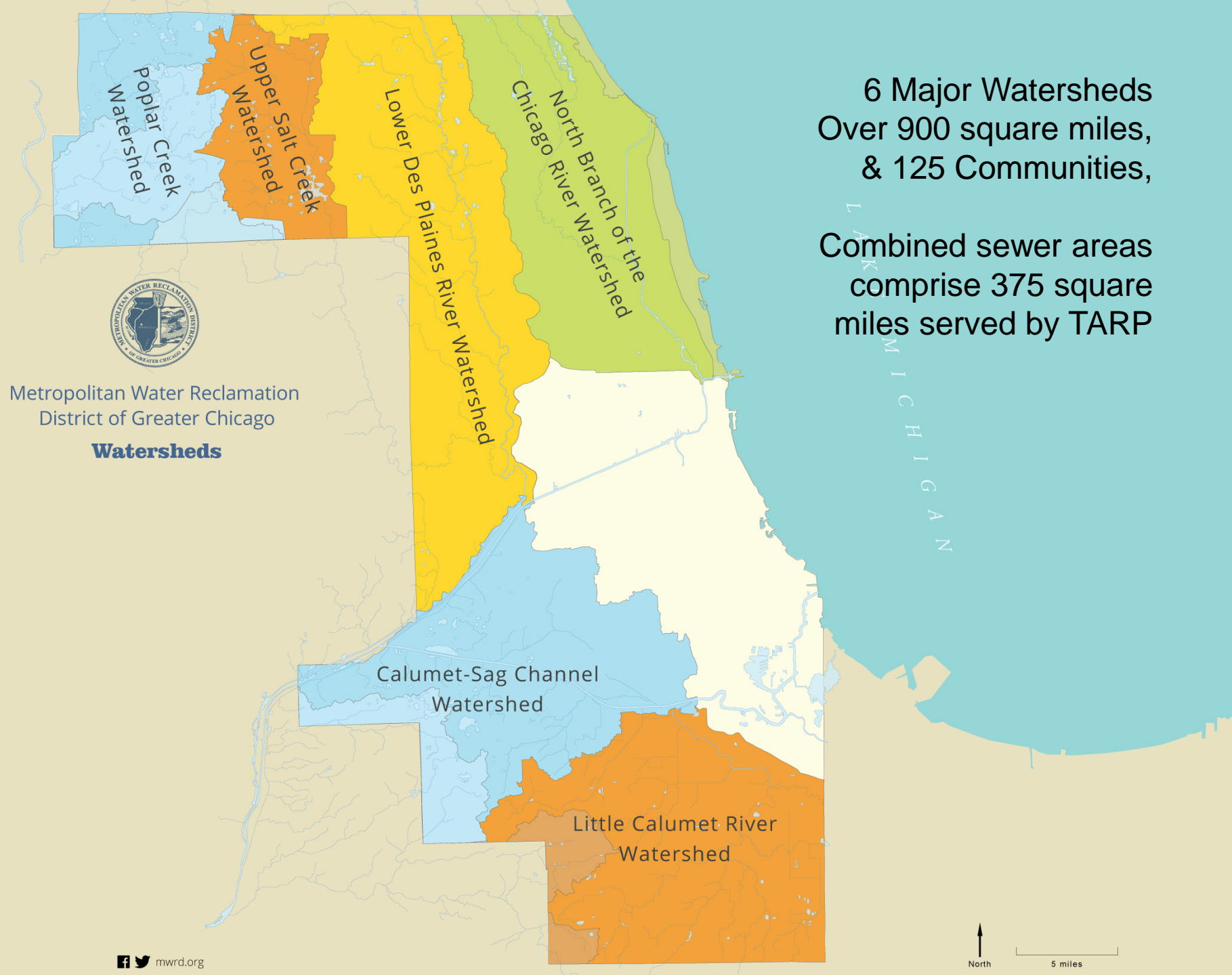
Recover Resources





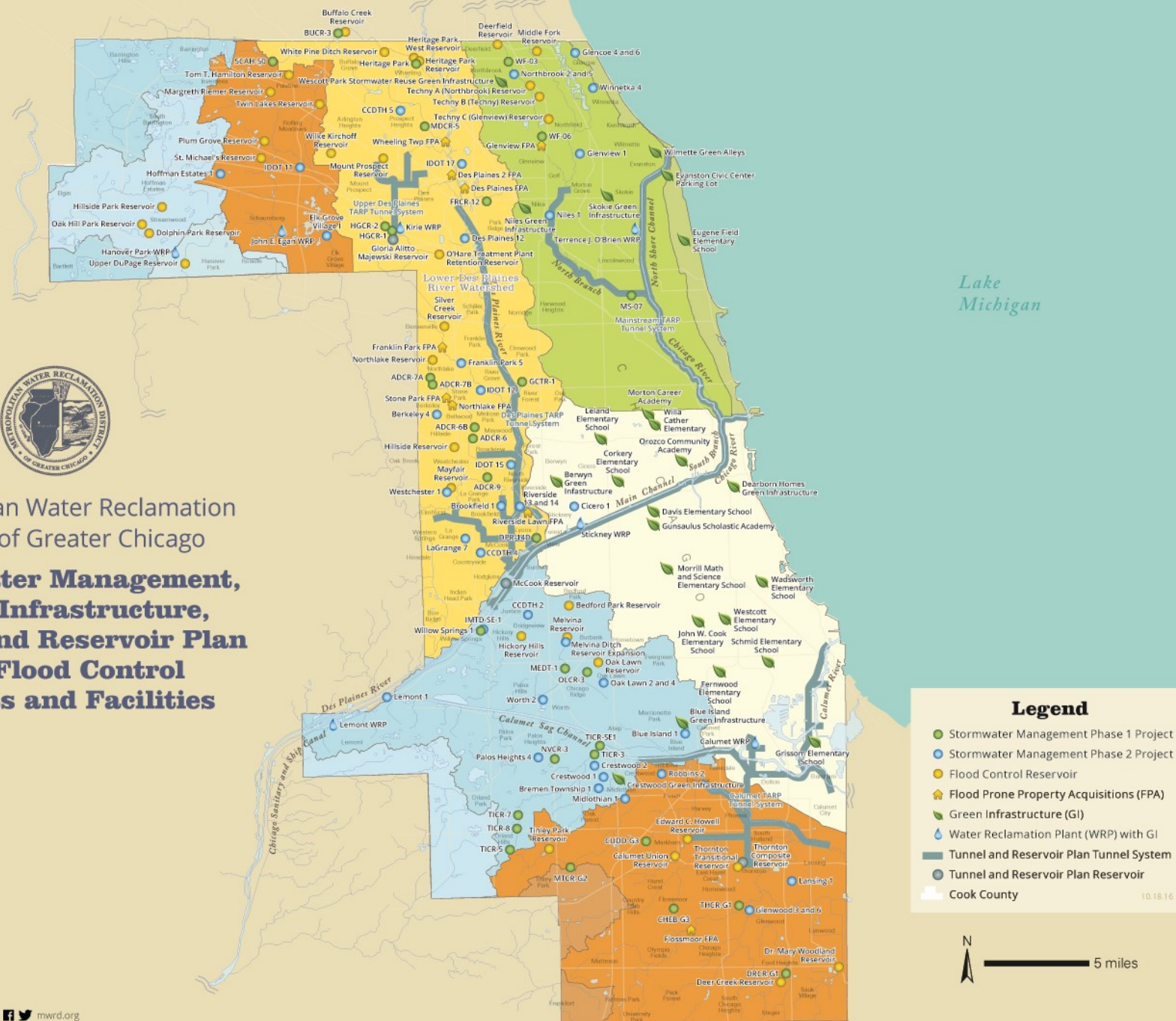
Stormwater Management Timeline







Metropolitan Water Reclamation
District of Greater Chicago
**Stormwater Management,
Green Infrastructure,
Tunnel and Reservoir Plan
and Flood Control
Projects and Facilities**



Robbins Area 1929

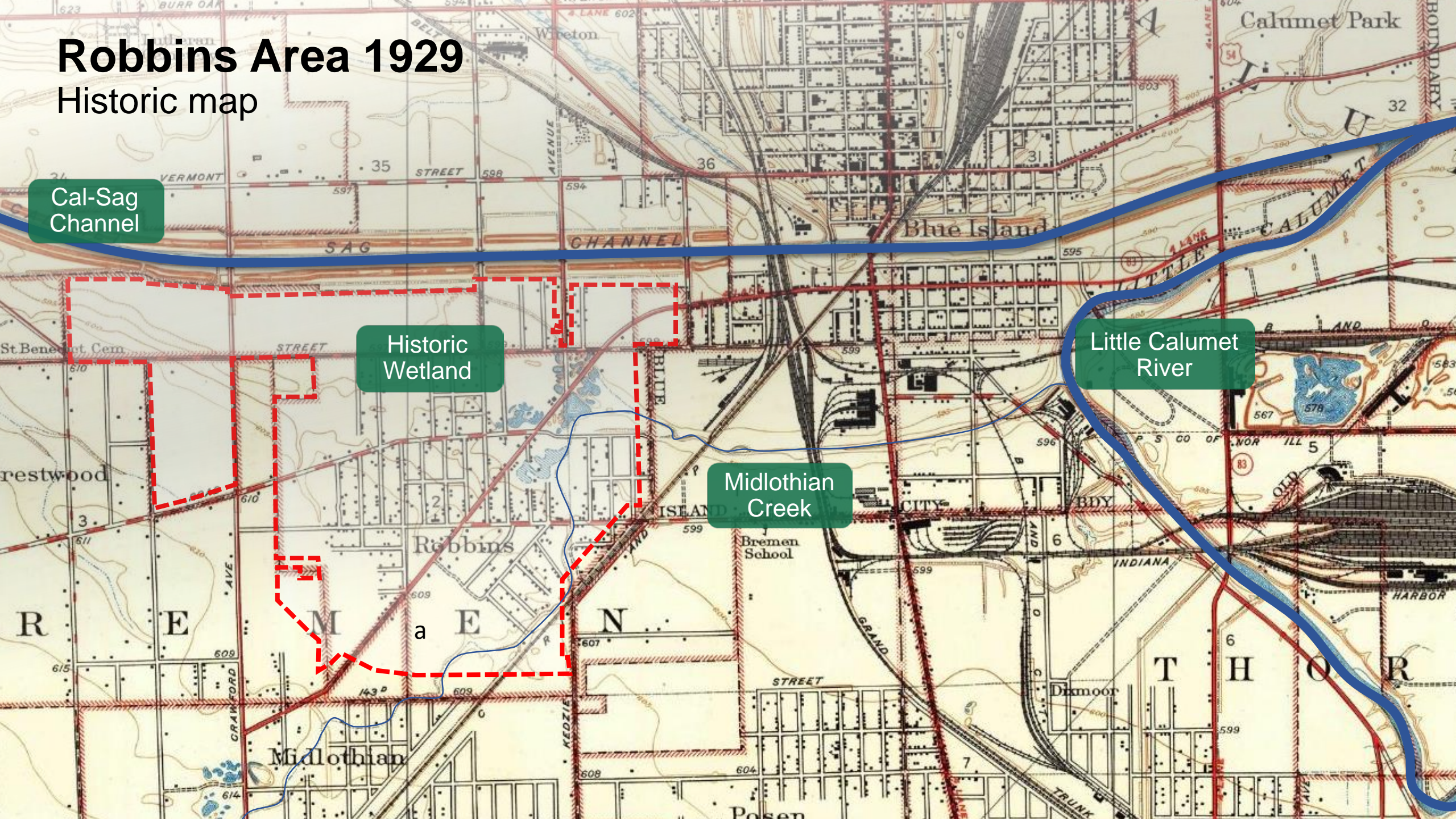
Historic map

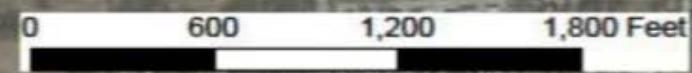
Cal-Sag Channel

Historic Wetland

Midlothian Creek

Little Calumet River





Cal-Sag Channel

Kedzie Avenue

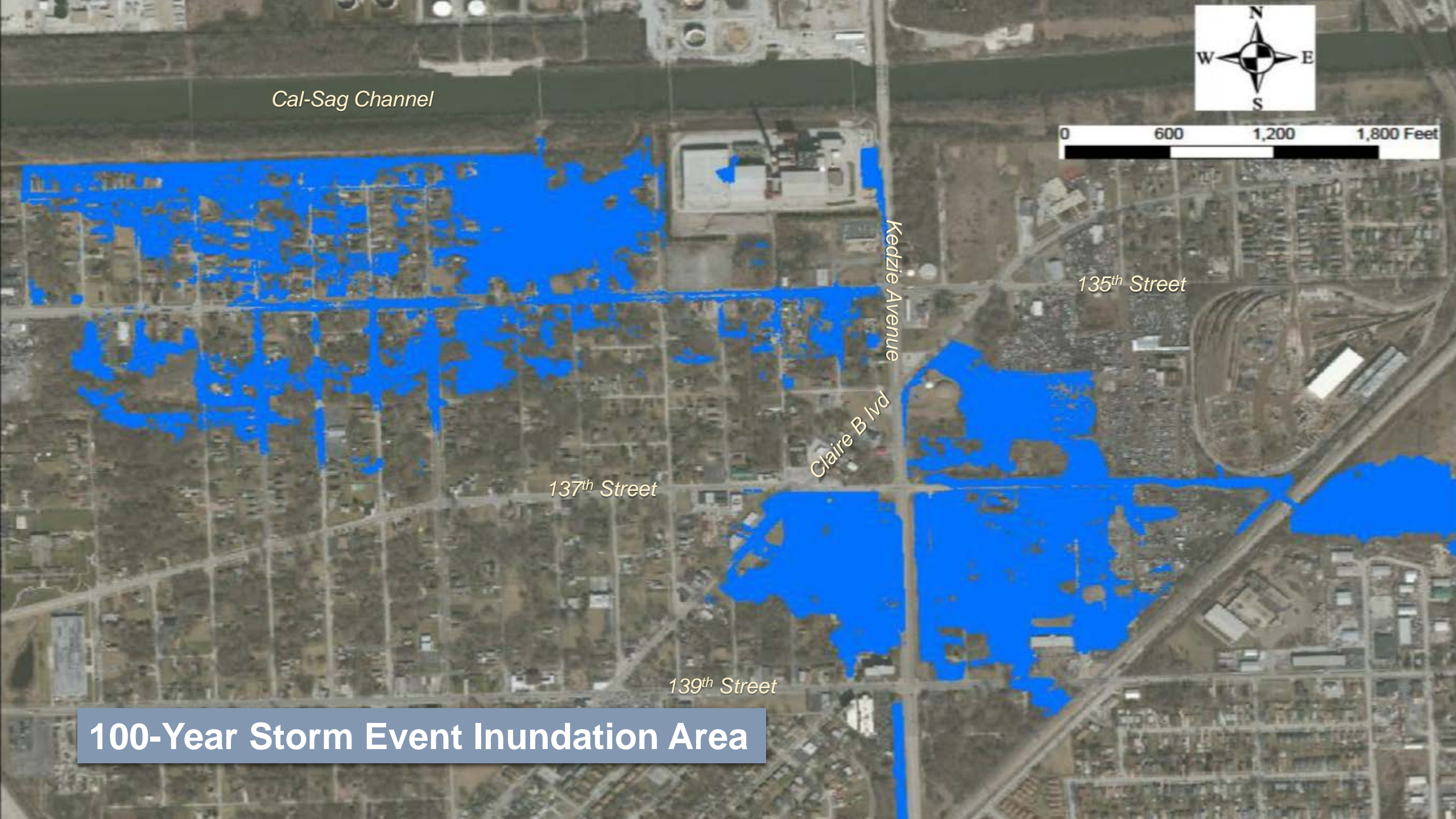
135th Street

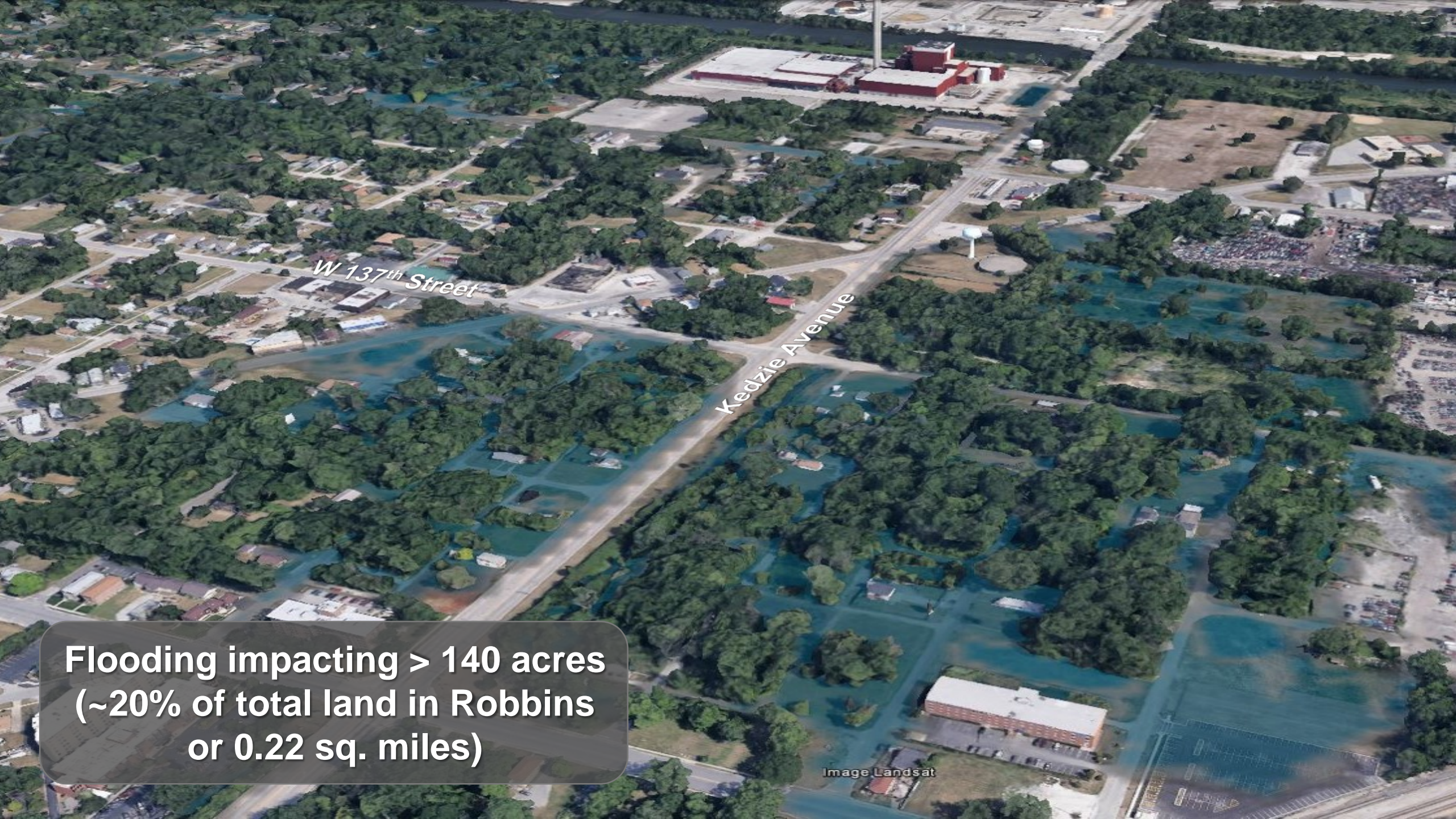
Claire B Ivd

137th Street

139th Street

100-Year Storm Event Inundation Area





**Flooding impacting > 140 acres
(~20% of total land in Robbins
or 0.22 sq. miles)**

Image Landsat



Kedzie Avenue Looking South
February 2018 Flood Event



Troy Avenue Looking West
February 2018 Flood Event

Alternative #1



Alternative #2



Challenges of the Previous Work

- Engineered solutions focused only on stormwater management
 - Effective, but high cost (\$6M)
 - Provided 25-year level of protection
 - Solution impacted at least some homes
 - Plans for future development incomplete and not integrated with stormwater alternatives
 - No added benefits beyond flood control



HELP ME

HELP YOU



Continuous Flooding



Lack of investment & services



Vacant land



Lack of sports fields



Lack of major open spaces



Poor relationship to transit

Opportunities

“Let’s design a flood control solution that will maximize local assets and spur economic development.”



Vision Plan for Robbins

- MWRD would like to assist in implementing a local plan
- Maximize local assets
 - People
 - History
 - Transportation
 - Proximity to industry, city
- Guided by and partnered with the Village



Job creation



Potential for transit-oriented development



Creation of recreational spaces



Connections to the regional resources



Community Engagement

Public meetings and workshops

1. No Relocation of Residents
2. Solve the Flooding
3. Respect and engage the historic legacy of Robbins
4. Attract new residents
5. Facilitate development of affordable housing and retail
6. Inspire job creation
7. Create space for youth sports and seniors
8. Engage nature through learning, fishing, walking, & rowing
9. Establish a strategy for maintenance and maximizing the value of land around the park



An aerial photograph of the Robbins area, showing a grid of streets and existing buildings. A proposed green-blue stormwater solution is overlaid on the map. This solution includes a network of green spaces, parks, and playfields, as well as a series of interconnected blue water features, including wetlands and lakes. The green spaces are depicted with various shades of green and patterns of trees, while the water features are shown in blue. The map also shows a large, curved road on the right side and a series of parallel lines, possibly representing a railway or a major road, running diagonally across the bottom right. The overall vision is to create a more sustainable and green urban environment.

Vision:

A green-blue stormwater solution for Robbins which includes wetlands, lakes, parks and playfields

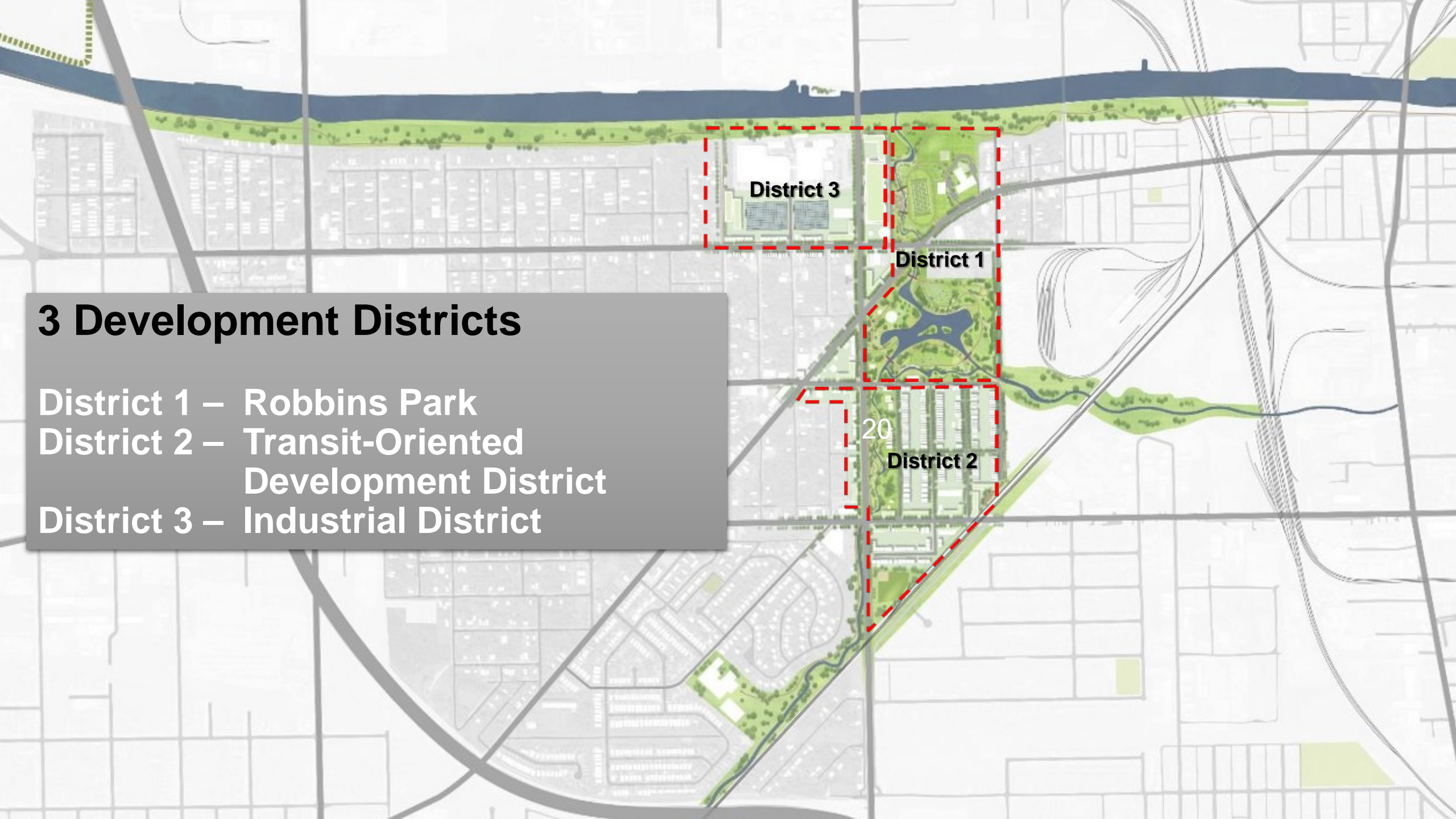
District 1 – Creating Robbins Park

3 Development Districts

District 1 – Robbins Park

District 2 – Transit-Oriented
Development District

District 3 – Industrial District



Technical Experts:

Cook County Department of
Transportation and Highways
Regional Transit Authority
Illinois Department of
Natural Resources
Chicago Botanic Garden
The Nature Conservancy
South Suburban Mayors &
Managers Association

Stewards/Workforce:

U.S. Department of
Defense / Innovative
Readiness Training
Program
Morton Arboretum
Chicago Botanic Garden
OAI, Inc.
Illinois Department of
Natural Resources
-Millennium Reserve

Funders/Influencers:

Cook County
U.S. Department of
Housing and Urban
Development
Illinois Housing
Development Authority

Land Holders:

South Suburban Land Bank
and Development Authority
Cook County Land Bank
Authority
Housing Authority of
Cook County
OpenLands

Illinois Department of
Natural Resources

The Nature Conservancy
South Suburban Mayors &
Managers Association
Metropolitan Planning
Council

Core Group for Infrastructure and Pre-Development Leadership:

Village of Robbins
Metropolitan Water
Reclamation District
Cook County
South Suburban Land Bank
and Development Authority
Metra

Other Interested Partners:

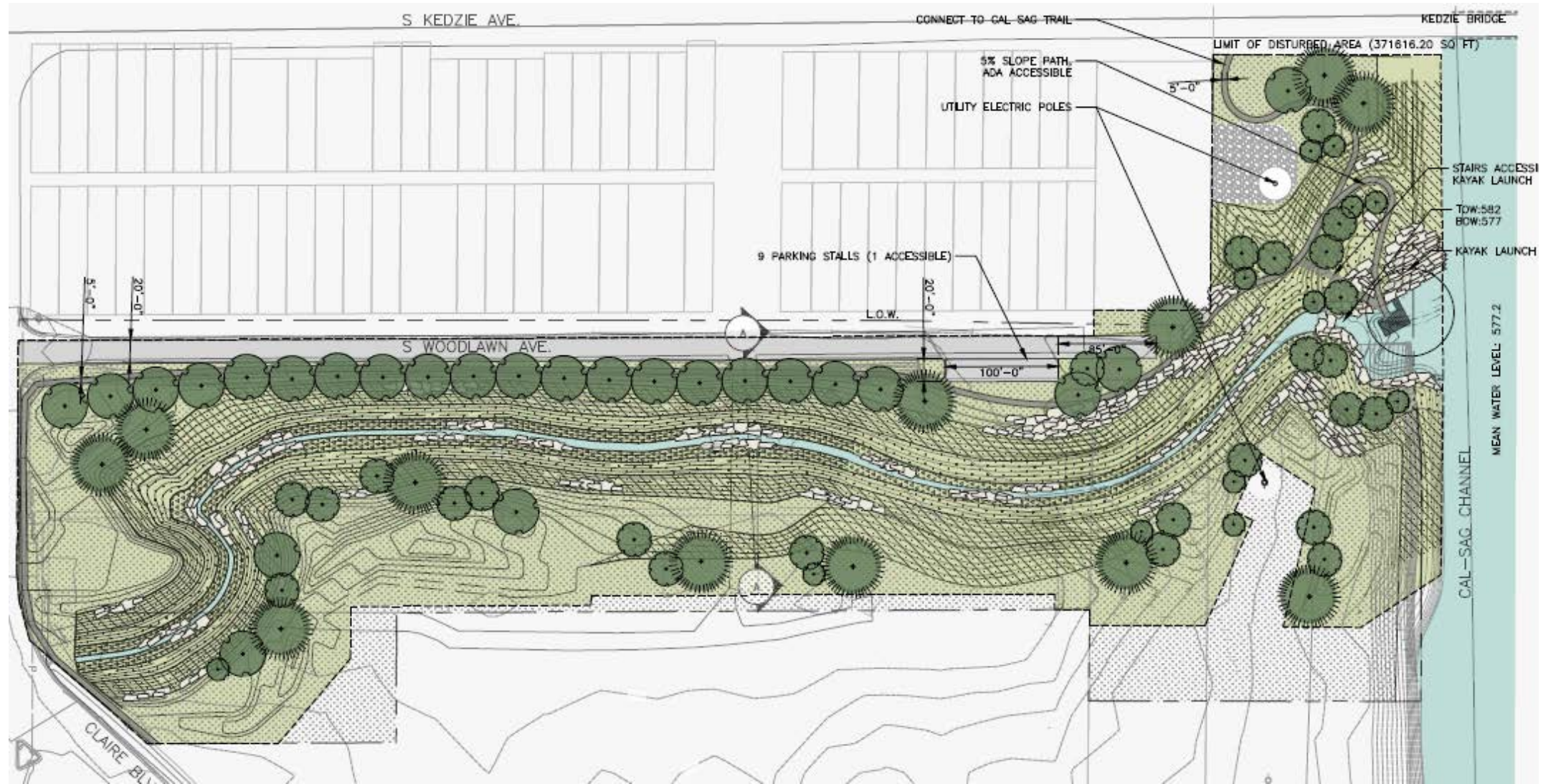
Illinois Environmental
Protection Agency
Forest Preserve District
of Cook County
Chicagoland Metropolitan
Agency for Planning
Argonne National Lab
Illinois Association of Park
Districts

Potential Private Partners:

UIC's Voorhees Center
Impact Engine
MacArthur Foundation
Grand Victoria Foundation
Chicago Community Trust
Rural Studio
Corvias
Owner of Robbins Power
Center
Miller Canfield

Stakeholder Engagement

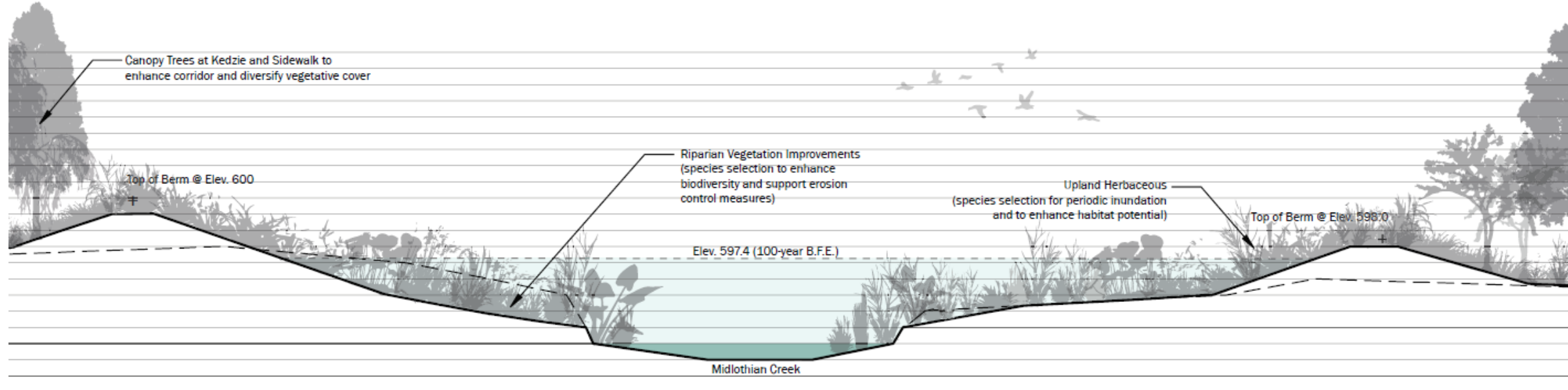
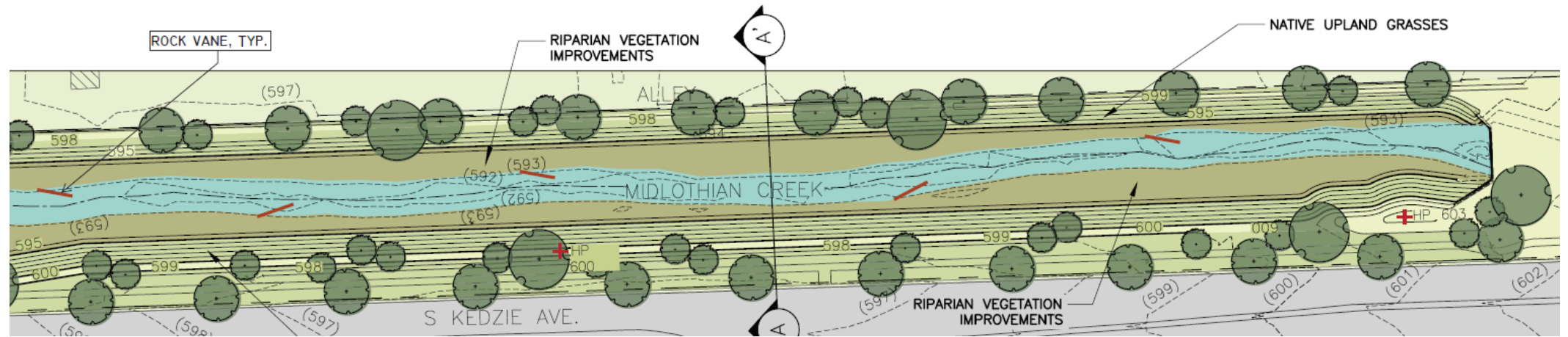
Chi-Cal Rivers Fund



Chi-Cal Rivers Fund



Section 319 Grant

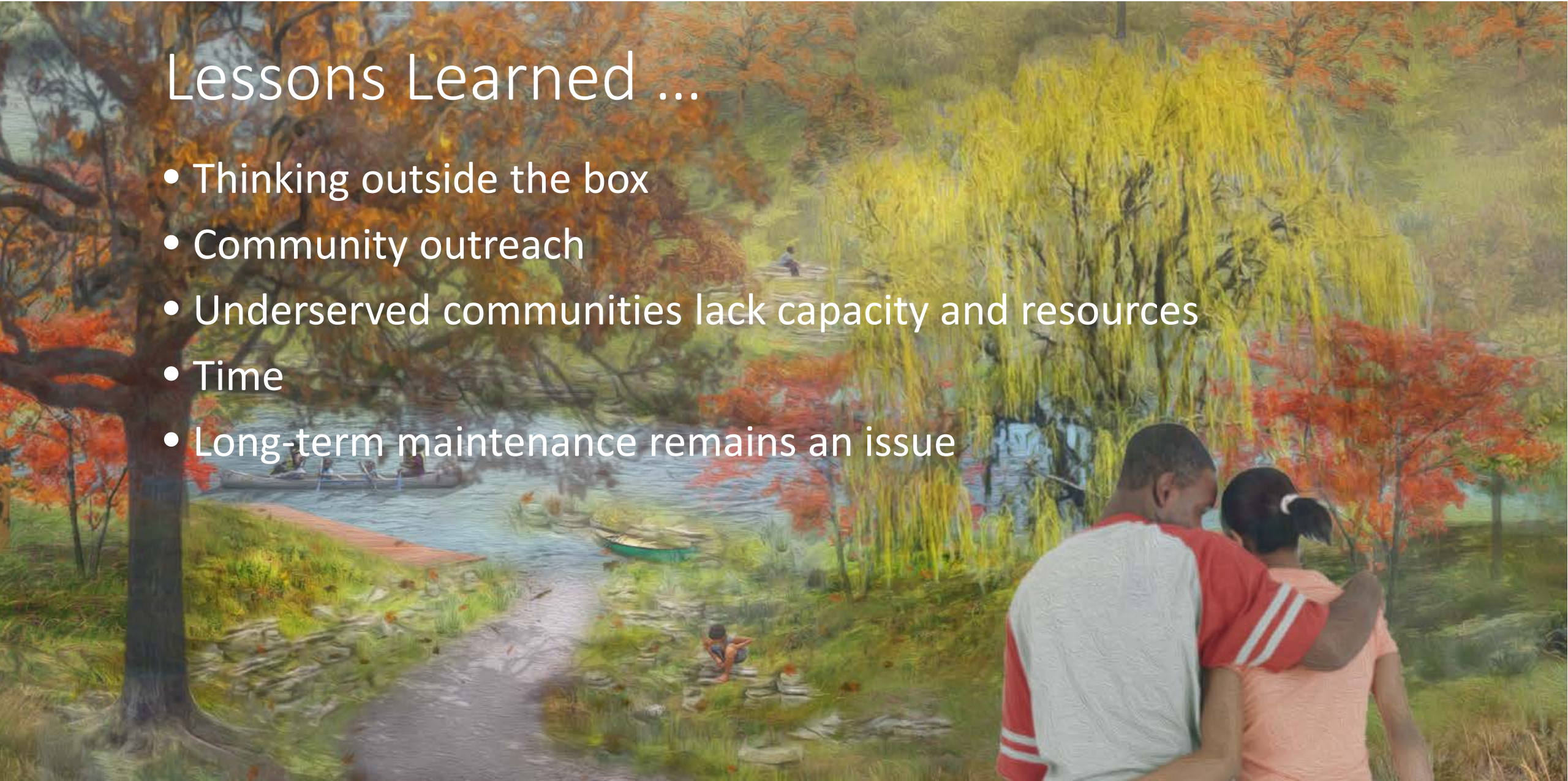


Grants Applied

- Chi-Cal Rivers Fund – NFWF - \$300 k
- CMAP's Local Technical Assistance Grant
- Chicago Community Trust/ Univ. Illinois Chicago - \$100 k
- Innovative Readiness Training Grant
- FEMA's Pre-Disaster Mitigation Grant
- Section 319 Grant
- Community Development Block Grant – DR \$2.2 m

Lessons Learned ...

- Thinking outside the box
- Community outreach
- Underserved communities lack capacity and resources
- Time
- Long-term maintenance remains an issue





Questions?

Richard Fisher, P.E., CFM

Senior Civil Engineer

MWRD

111 E. Erie Street

Chicago, IL 60643

FisherR@mwrdd.org

(312) 751-5479