



***Submitting Flood Hazard Mapping Needs to FEMA  
and Tracking Flood Study Actions  
May 23, 2019***

# Introductions

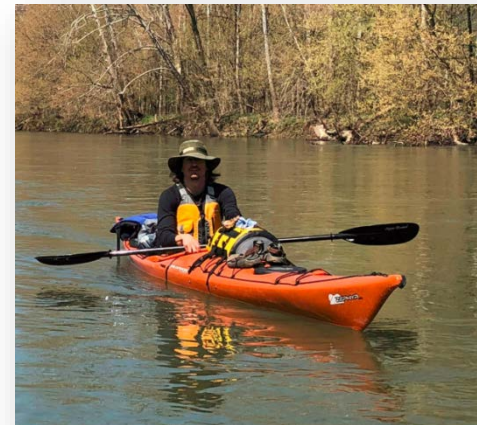
## **Eliza Ledwell, CFM – IBM**

Deputy Program Manager for FEMA  
Risk MAP Customer and Data  
Services



## **Dan Horner, CFM – NiyamIT**

Business Operations Architect for  
FEMA Risk MAP Customer and Data  
Services



# Risk MAP

- FEMA continues to increase access to flood hazard data to improve resulting mitigation actions and advance FEMA's strategic goals and objectives
- In support of the National Flood Insurance Program (NFIP) Risk MAP delivers quality data that increases public awareness and leads to action that reduces risk to life and property.
- Data is available to help answer questions such as
  - How long ago was flood mapping data created?
  - Is there new data that is being developed?
  - How can I request for new data to be developed?

# CNMS 2.0 Overview

In April 2019, FEMA launched a newly re-architected Coordinated Needs Management System Viewer

[msc.fema.gov/cnms](https://msc.fema.gov/cnms)

## Key Enhancements:

- Uses the latest data schema
- Added coastal CNMS lines!
- Added Unmapped lines
- Uses familiar ArcGIS Online interface
- Quick, intuitive access to New, Valid, and Updated Engineering (NVUE) reports

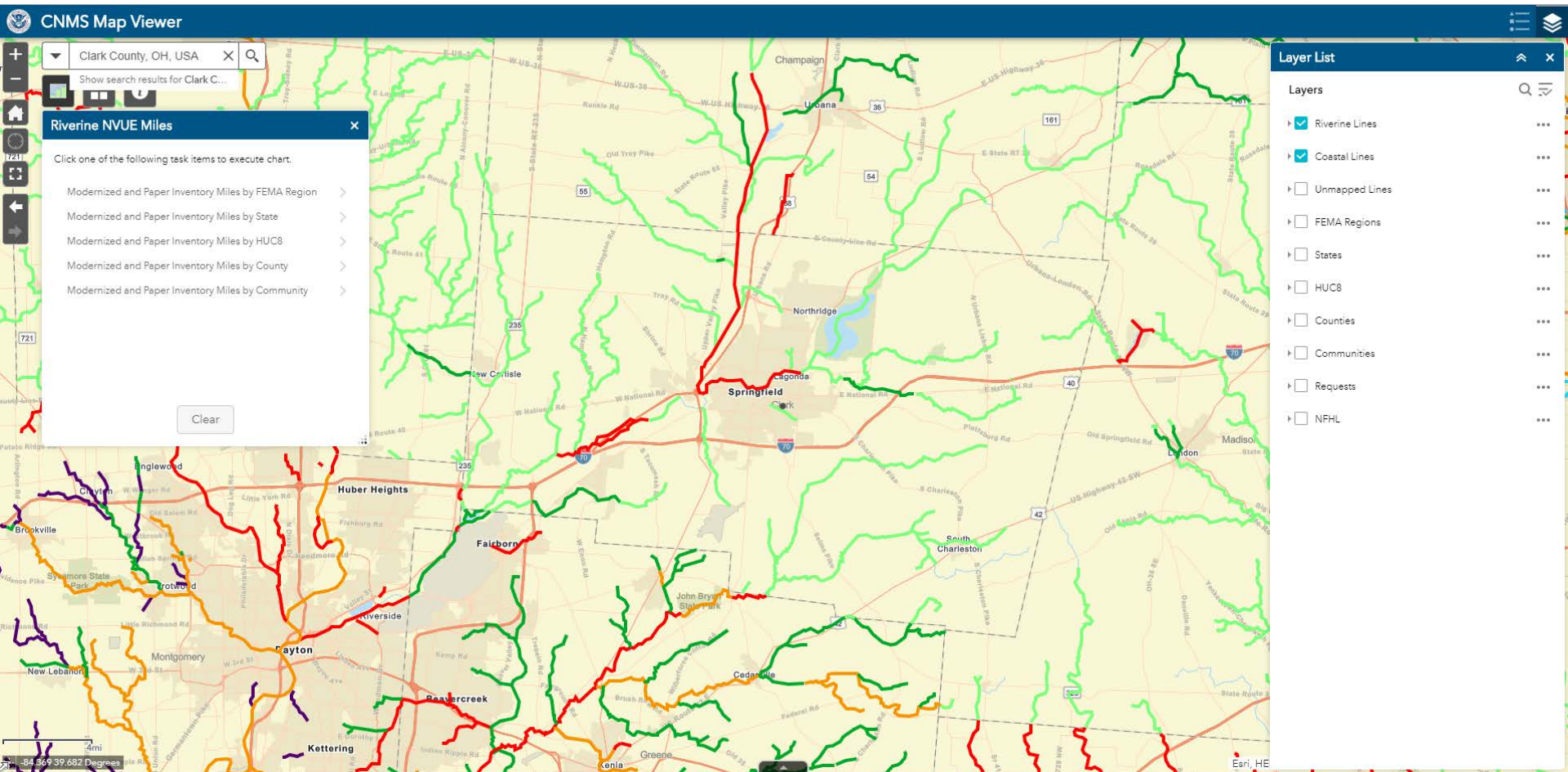


FEMA



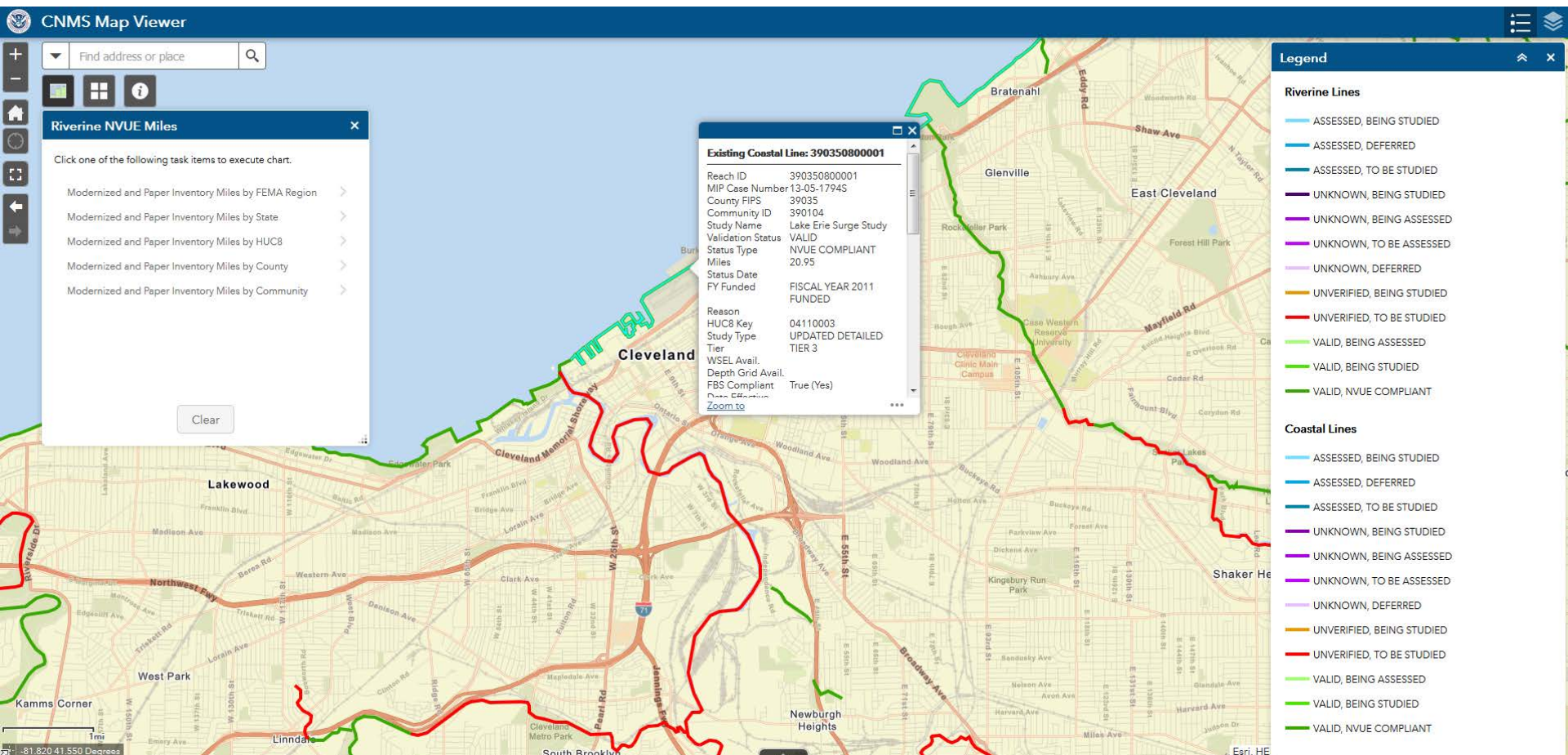
# CNMS Viewer 2.0

**CNMS Viewer supports community officials and FEMA management and staff in analyzing and depicting flood risk study validity**



# CNMS Viewer

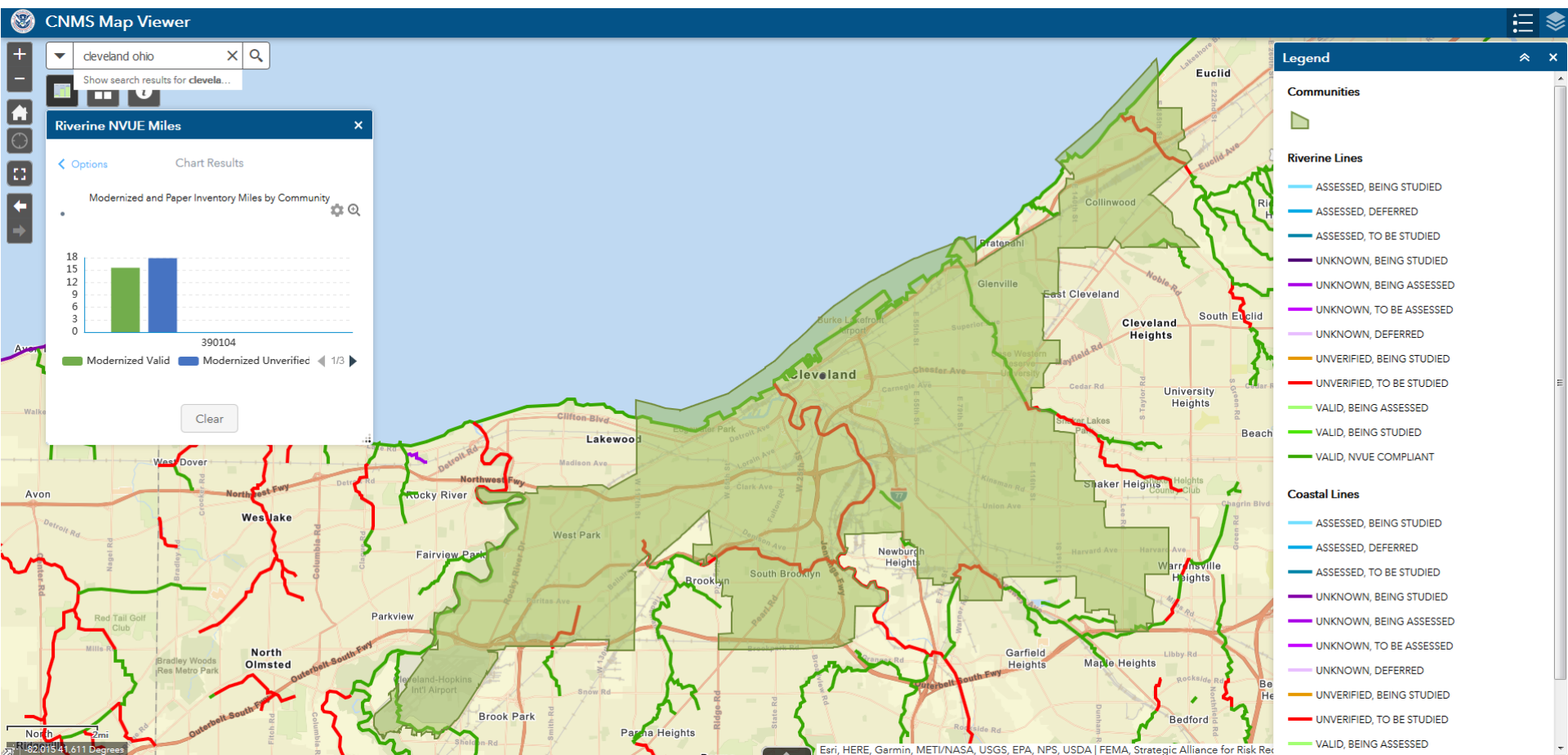
**CNMS Viewer provides a map view of study and mapping needs for areas where updated study is needed**





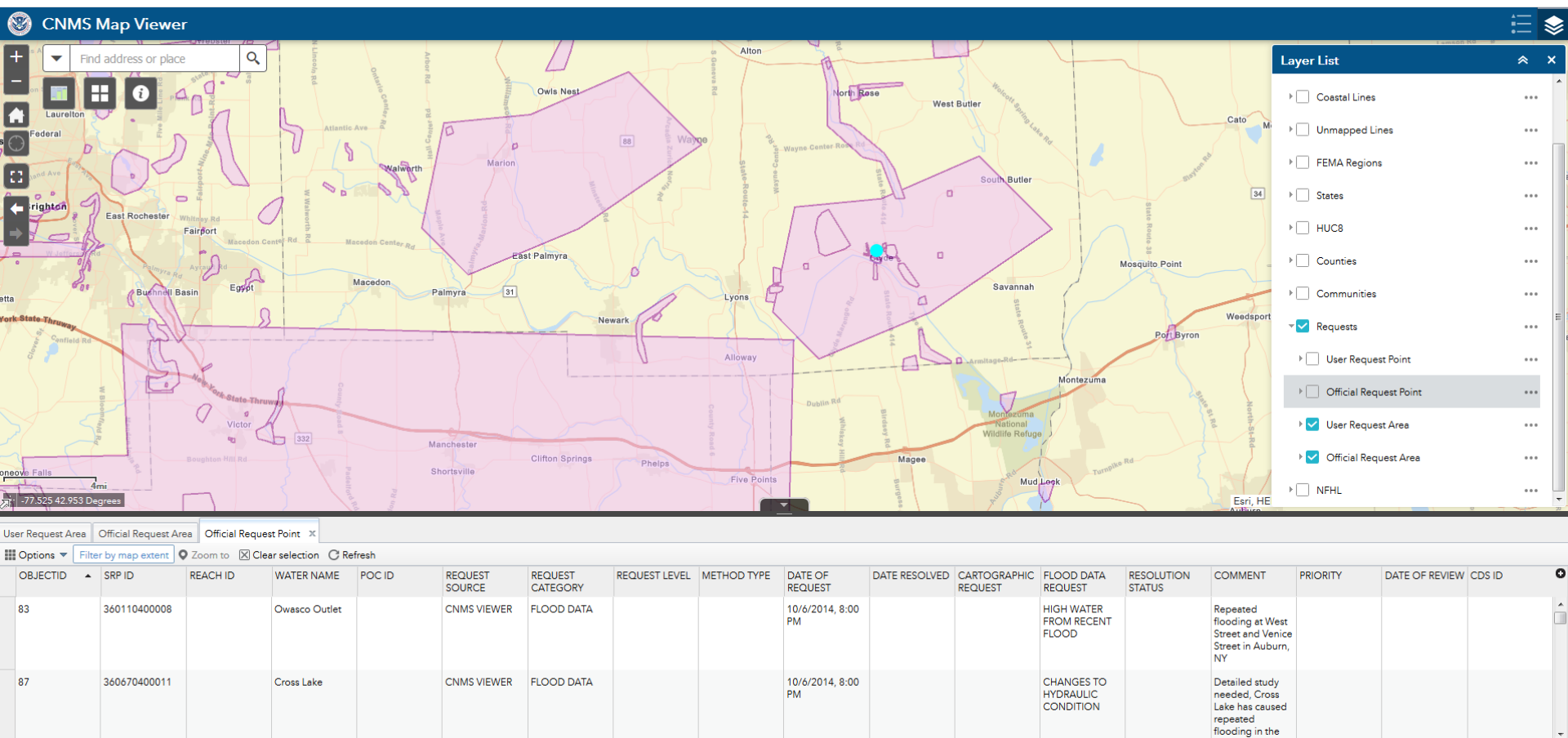
# CNMS Viewer

**Communities may find that viewing the validation status types is useful for tracking and making informed map update investment decisions**



# CNMS Requests

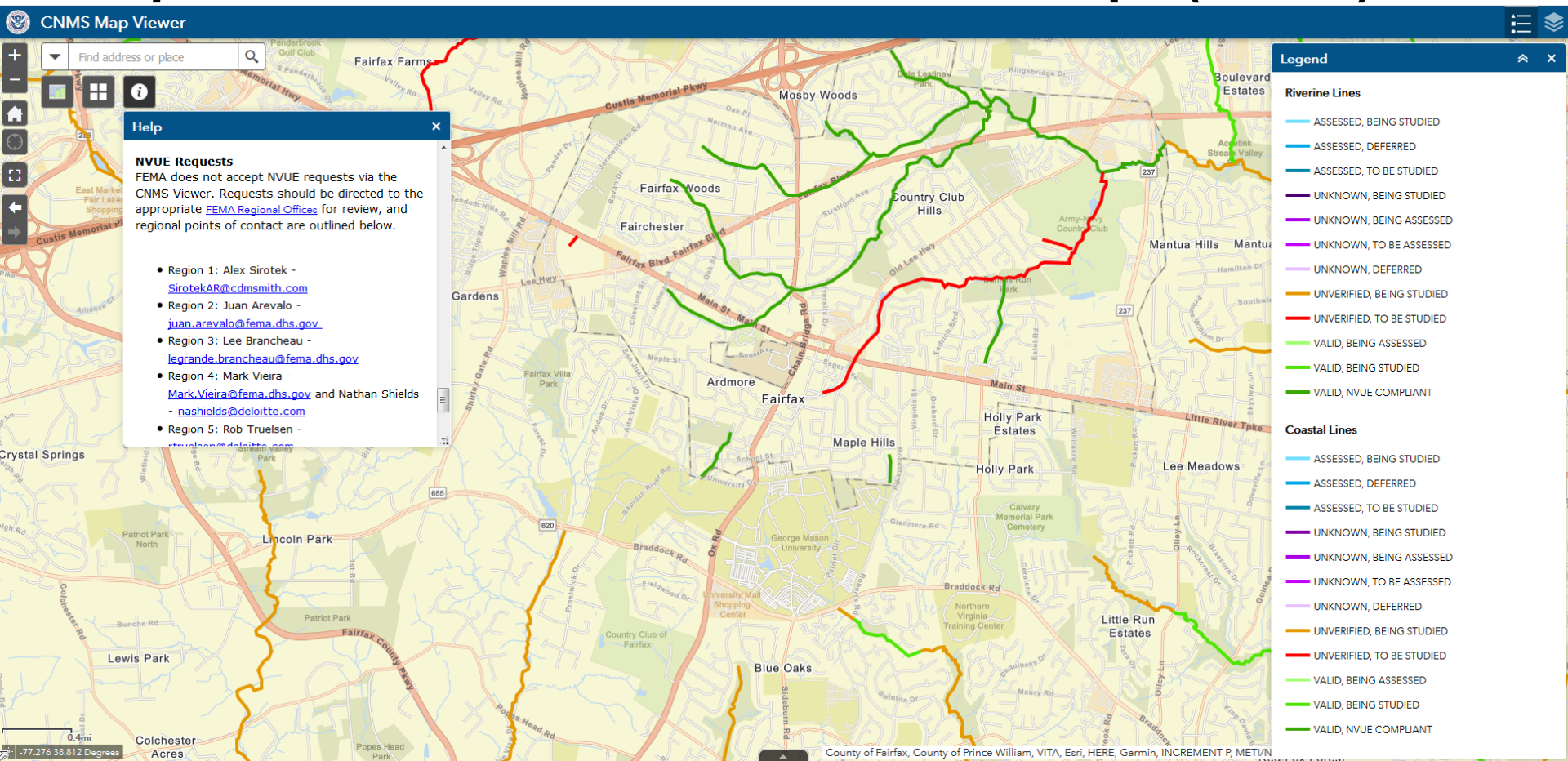
Point or Polygon where study or mapping updates are desired





# Submitting Mapping Needs

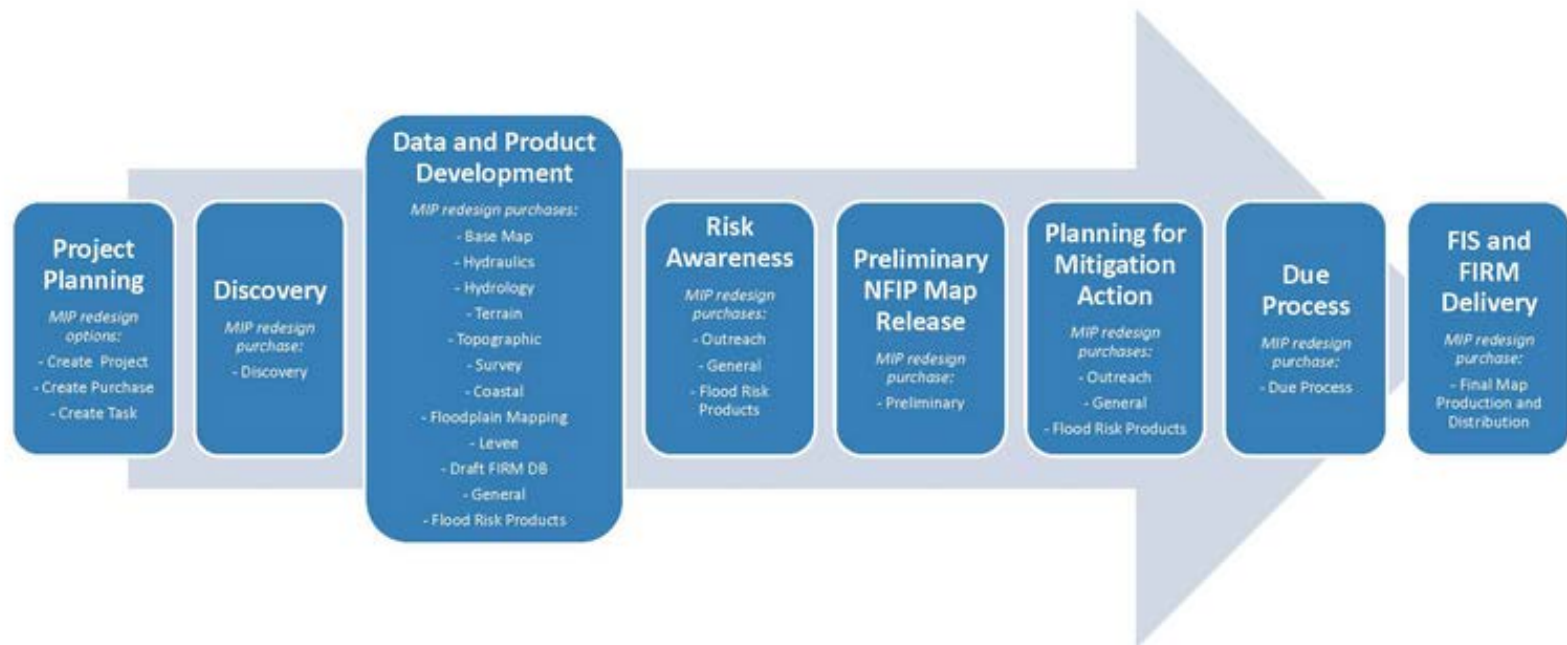
Changes in the physical environment, climate patterns, and engineering methods may warrant updates to the Flood Insurance Rate Maps (FIRMs)



# Tracking status of a Study

FEMA's data can go through several stages before becoming effective for regulatory use in floodplain management and flood insurance. These stages are intended to make sure communities and homeowners are aware of changes that may impact them

## FEMA's Flood Hazard Lifecycle



# Study Tracker Map

**Get project history in one place**

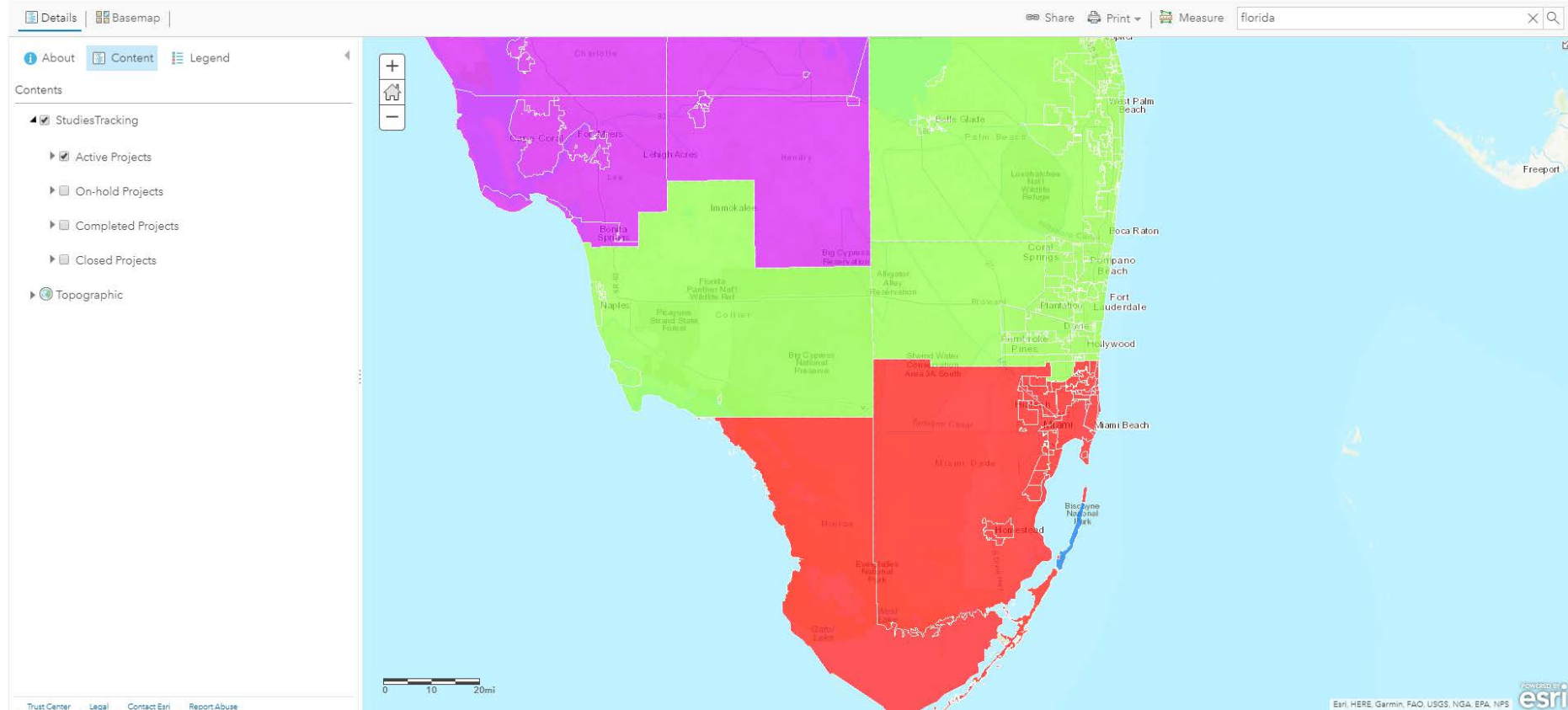
**Find all projects for a community**

**Status for a project: Active, On-hold, Completed**

ArcGIS Mapping Information Platform Studies Tracker

URL: <http://arcg.is/0P8mjD>

Modify Map Sign In



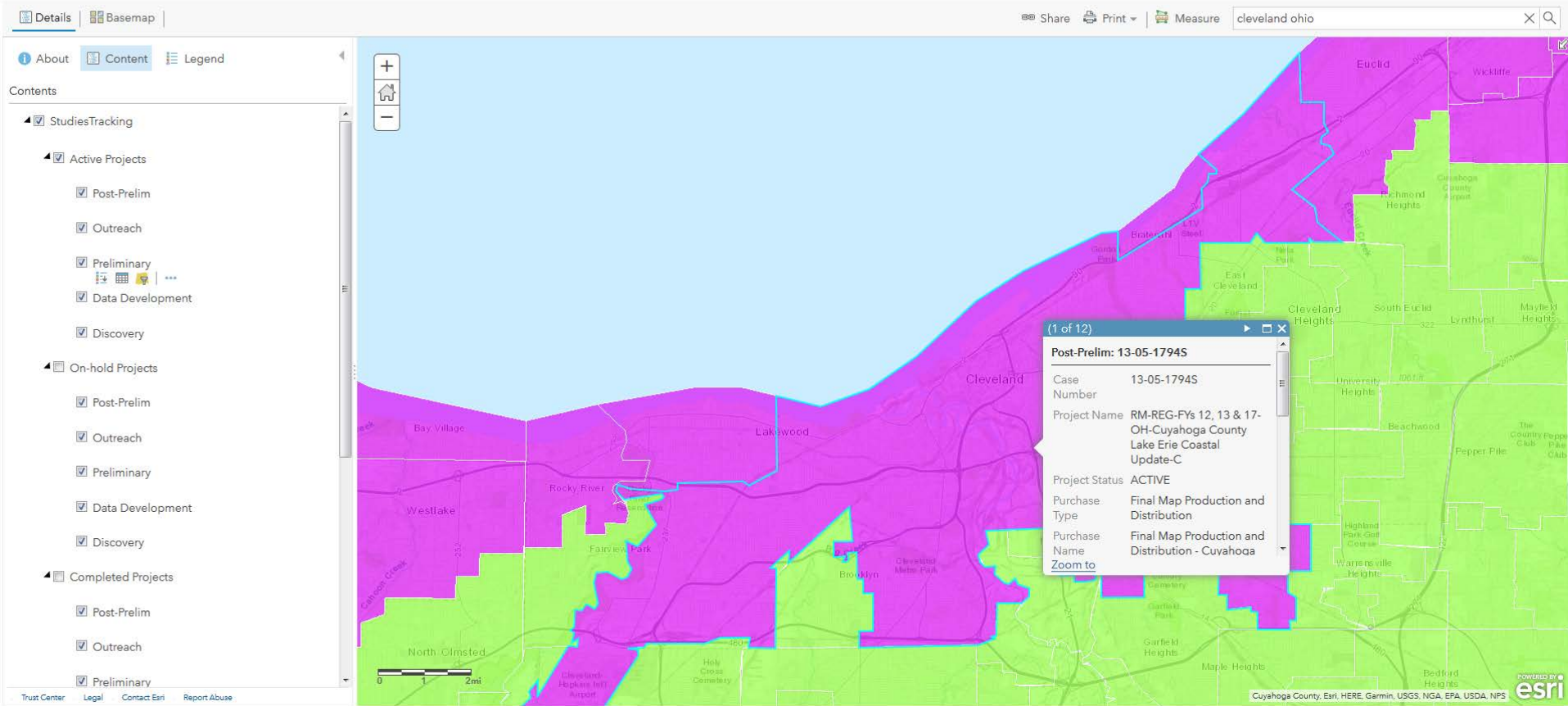


# Study Tracker Map

**Purchases are grouped by the phase of a project (Discovery, Data Development, Preliminary, Outreach, Post-Prelim)**  
**Purchases of supplemental Risk MAP products (FRP, ABFE, BLE, LSAE)**


ArcGIS Mapping Information Platform Studies Tracker

Modify Map Sign In



# Study Tracker Map

View additional data for a project in the attribute table

ArcGIS  Mapping Information Platform Studies Tracker

Modify Map  Sign In

Details

Basemap

Share

Print

Measure

cleveland ohio

AboutContentLegend

Contents

StudiesTracking

Active Projects

Post-Prelim

Outreach

Preliminary

Data Development

Data Development (Active)

Discovery

On-hold Projects

Post-Prelim

Outreach

Preliminary

Data Development

Discovery

Completed Projects

Post-Prelim

Outreach

012mi

Euclid

Wickliffe

Richmond Heights

Cuyahoga County Airport

Mayfield Heights

Lyndhurst

South Euclid

Cleveland Heights

East Cleveland

Cleveland

Cuyahoga County, Province of Ontario, Esri, HERE, Garmin, USGS, NGA, EPA, USDA, NPS

StudiesTracking - Data Development (Features: 2000, Selected: 0)

Case Number	Project Name	Project Status	Purchase Type	Purchase Name	Purchase Description	Purchase Status	Purchase Type Indicator
19-01-0006S	FY18 Base Level Engineering	ACTIVE	Terrain	Terrain - VT 2D BLE 05		ACTIVE	
17-07-0081S	Upper Marais Des Cygnes HUC 10290101 KS-FY16/17 RM	ACTIVE	FRP	FRP - Upper Marais Des Cygnes HUC 26		ACTIVE	
16-05-2904S	RM-RMP-FY15-OH-05090202-Little Miami River Watershed (14-05-4202S)-O-W	ACTIVE	FRP	FRP - Little Miami River Watershed   05090202   Flood Risk Map 09		ACTIVE	
11-09-0925S	Santa Clara River & T ribs PMR (Los Angeles, CA)	ACTIVE	Hydrology	Hydrology(PMR) - Los Angeles County, CA - 1		COMPLETED	PMR
07-08-0688S	REG - Ward County, ND - FY07	ACTIVE	Terrain	Terrain - Ward County, ND - 20		COMPLETED	
13-05-2653S	RM-REG-FY12-FY15-	ACTIVE	Survey	Survey - Cook County, IL -	Chain of Lakes / Fox River	ACTIVE	

Trust Center

Legal

Contact Esri

Report Abuse

# Study Tracker Map

**Filter by any of the fields available**

**Purchases:** Discovery, Coastal, Flood Risk Products (FRP), Hydraulics, Hydrology, Levee, Terrain, Topographic, Preliminary, Outreach

**Purchase type indicator:** Revised Prelim, LSAE, BLE, Advisory BFE

**Filter: StudiesTracking - Data Development**

Create

+ Add another expression ☐ Add a set

Display features in the layer that match all of the following expressions

Purchase Type is Draft FIRM Database ☐ Value ☐ Field ☒ Unique

Ask for values

Purchase Type Indicator is ABFE

Ask for values

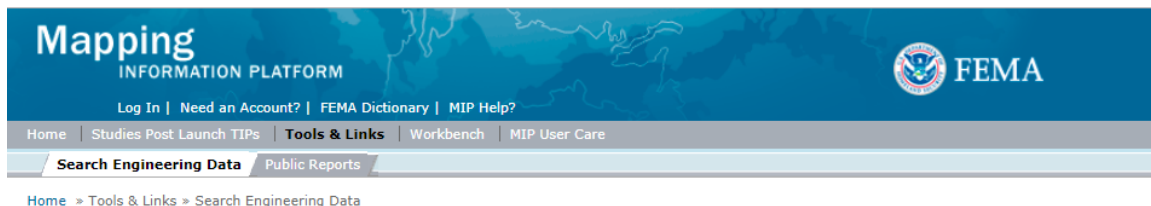
CLOSE

Case Number	Description	Status	Purchase	Purchase Type Indicator
19-01-0006S				
17-07-0081S				
16-05-2904S	RM-RMP-FY15-OH-05090202-Little Miami River Watershed (14-05-4202S)-O-W	ACTIVE	FRP	FRP - Little Miami River Watershed   05090202   Flood Risk Map 09
11-09-0925S	Santa Clara River & Tribs PMR (Los Angeles, CA)	ACTIVE	Hydrology	Hydrology(PMR) - Los Angeles County, CA - 1
07-08-0688S	REG - Ward County, ND - FY07	ACTIVE	Terrain	Terrain - Ward County, ND - 20
13-05-2653S	RM-REG-FY12-FY15-	ACTIVE	Survey	Survey - Cook County, IL - Chain of Lakes / Fox River



# Flood Risk Study Engineering Library

Use the Mapping Information Platform (MIP) Flood Risk Study Engineering Library (FRiSEL) for study data from ~2006 - Present.



The screenshot shows the top section of the FEMA Mapping Information Platform. It includes the 'Mapping INFORMATION PLATFORM' title, the FEMA logo, and a navigation bar with links for 'Log In', 'Need an Account?', 'FEMA Dictionary', and 'MIP Help?'. Below this is a secondary navigation bar with links for 'Home', 'Studies Post Launch TIPS', 'Tools & Links', 'Workbench', and 'MIP User Care'. A third bar highlights 'Search Engineering Data' and 'Public Reports'. At the bottom of this section is a breadcrumb trail: 'Home > Tools & Links > Search Engineering Data'.

User Guide (Download Adobe Acrobat Reader).  
Engineering Library Data Guide.  
Need Assistance or see an issue with the data?

## Flood Risk Study Engineering Library

Keyword(s) Search ?

Go

Advanced Search ?

State

FEMA Case Number

County

Effective Date From

Community Name

Effective Date To

Type of Data Product

[+ More Options](#)

Search

Reset

Last Updated: Wednesday, 22-May-2019 11:20 AM ET

[DHS.gov](#) | [FEMA.gov](#) | [Privacy Policy](#) | [Terms of Use](#) | [Accessibility](#) | [Site Help](#) | [Site Map](#) | [Contact Us](#)

FEMA 500 C Street, SW Washington, D.C. 20472 Phone: (202) 566-1600



FEMA

# Flood Risk Study Engineering Library

## Screenshot FRISEL completed Search

Mapping  
INFORMATION PLATFORM

FEMA

[Log In](#) | [Need an Account?](#) | [FEMA Dictionary](#) | [MIP Help?](#)

[Home](#) | [Studies Post Launch TIPS](#) | **[Tools & Links](#)** | [Workbench](#) | [MIP User Care](#)

**[Search Engineering Data](#)** | [Public Reports](#)

[Home](#) » [Tools & Links](#) » Search Engineering Data

Narrow Your Search ?

**Project Type**  
☐ Study (1)

**State**  
☐ Ohio (1)

**Case Number**

**Type of Data Product**  
☐ Hydraulic (Studies) (1)

Refine Search

### Flood Risk Study Engineering Library

Keyword(s) Search ?

Advanced Search ?

State

FEMA Case Number

County

Effective Date From

Community Name


Effective Date To

Type of Data Product

[+ More Options](#)

1 result matches the search criteria

Showing 1 to 1

 [FEMA Case Number: 07-05-4860S - Hydraulic \(Studies\)](#)  
Project ID/Name: Clark County, OH (Countywide DFIRM) | Type of Data Product: Hydraulic (Studies) | Effective Date: 07/09/2008 | Date  
Uploaded: 07/10/2008 | Project CID(s): 39023C-Clark County-wide | Product CID(s): 39023C-Clark County-wide

Page 1 of 1

1




FEMA

# Flood Risk Study Engineering Library

Download data that is available

**Mapping**  
INFORMATION PLATFORM

 **FEMA**

Log In | Need an Account? | FEMA Dictionary | MIP Help?

Home | Studies Post Launch TIPS | **Tools & Links** | Workbench | MIP User Care

**Search Engineering Data** | Public Reports

[Home](#) » [Tools & Links](#) » Search Engineering Data

User Guide (Download Adobe Acrobat Reader).  
Need Assistance or see an issue with the data?

## FEMA Case Number: 07-05-4860S - Hydraulic (Studies)

FEMA Case Number: 07-05-4860S  
Project ID/Name: Clark County, OH (Countywide DFIRM)  
Type of Data Product: Hydraulic (Studies)  
Effective Date: 07/09/2008  
Date Uploaded: 07/10/2008  
Project CID(s): 39023C-Clark County-wide  
Product CID(s): 39023C-Clark County-wide

[Back to Search Results](#)

63 Files Found

[Download All](#)

[Download Selected File\(s\)](#)

[View Metadata](#)

[Help with this page.](#)

- ☐ Supplemental Information/Additional\_Hydrology/FlowChangeLocations.prj
- ☒ Hydraulic Model/Clark County/Spatial Files/StreamCenterlines.shp
- ☒ Hydraulic Model/Clark County/Spatial Files/StreamCenterlines.sbx
- ☒ Hydraulic Model/Clark County/Spatial Files/StreamCenterlines.sbn
- ☒ Hydraulic Model/Clark County/Spatial Files/StreamCenterlines.dbf
- ☒ Hydraulic Model/Clark County/Spatial Files/CrossSections.shx
- ☒ Hydraulic Model/Clark County/Spatial Files/CrossSections.shp.xml
- ☒ 39023C\_Hydraulics\_metadata.xml
- ☒ Hydraulic Model/Clark County/Spatial Files/CrossSections.shp
- ☒ Hydraulic Model/Clark County/Spatial Files/CrossSections.sbx
- ☒ Hydraulic Model/Clark County/Spatial Files/CrossSections.sbn
- ☒ Hydraulic Model/Clark County/Spatial Files/CrossSections.prj
- ☒ Hydraulic Model/Clark County/Spatial Files/StreamCenterlines.shp.xml
- ☒ Hydraulic Model/Clark County/Spatial Files/StreamCenterlines.shx
- ☐ Supplemental Information/Additional\_Hydrology/FlowChangeLocations.dbf
- ☐ Supplemental Information/Additional\_Hydrology/StreamStats/LongestFlowPaths.sbn
- ☐ Supplemental Information/Additional\_Hydrology/FlowChangeLocations.sbn
- ☐ Supplemental Information/Additional\_Hydrology/FlowChangeLocations.sbx
- ☐ Supplemental Information/Additional\_Hydrology/FlowChangeLocations.shp
- ☐ Supplemental Information/Additional\_Hydrology/FlowChangeLocations.shp.xml
- ☐ Supplemental Information/Additional\_Hydrology/FlowChangeLocations.shx
- ☐ Supplemental Information/Additional\_Hydrology/ZoneAStreams.dbf
- ☐ Supplemental Information/Additional\_Hydrology/ZoneAStreams.prj
- ☐ Supplemental Information/Additional\_Hydrology/ZoneAStreams.sbn
- ☐ Supplemental Information/Additional\_Hydrology/ZoneAStreams.sbx



FE

**RiskMAP**  
Increasing Resilience Together



# Flood Risk Study Engineering Library

## Mapping INFORMATION PLATFORM



[Log In](#) | [Need an Account?](#) | [FEMA Dictionary](#) | [MIP Help?](#)

[Home](#) | [Studies Post Launch TIPS](#) | **[Tools & Links](#)** | [Workbench](#) | [MIP User Care](#)

**Search Engineering Data** | [Public Reports](#)

[Home](#) » [Tools & Links](#) » Search Engineering Data

[User Guide](#) (Download Adobe Acrobat Reader).  
[Engineering Library Data Guide](#).  
Need Assistance or see an issue with the data?

### Narrow Your Search ?

#### Project Type

- ☐ Amendment (287)
- ☐ Revision (5)
- ☐ Study (21)

#### State

- ☐ Ohio (313)

#### Case Number

#### Type of Data Product

- ☐ 216-AD (Amendments) (8)
- ☐ Alluvial Fan Analysis (Studies) (4)
- ☐ Base Map (Studies) (1)
- ☐ Correspondence/Data (Amendments) (24)
- ☐ Cover Letter (Amendments) (11)
- ☐ DFIRM DB 'Draft' (Studies) (1)
- ☐ Field Survey (Studies) (1)
- ☐ Final DFIRM (Studies) (1)
- ☐ Final Determination (Amendments) (39)
- ☐ Final Letter (Amendments) (3)
- ☐ Floodplain Mapping (Studies) (1)
- ☐ General (Studies) (1)
- ☐ Hydraulic (Studies) (1)
- ☐ Hydrologic (Studies) (1)
- ☐ Preliminary DFIRM (Studies) (1)
- ☐ Prepare for Scoping (Studies) (1)

## Flood Risk Study Engineering Library

Keyword(s) Search ?

Go

☐ [Advanced Search ?](#)

State	<input type="text" value="39 - Ohio"/>
County	<input type="text" value="39023 - Clark County"/>
Community Name	<input type="text" value="-- select --"/>
Type of Data Product	<input type="text" value="-- select --"/>

FEMA Case Number	<input type="text"/>
Effective Date From	<input type="text" value="mm/dd/yyyy"/>
Effective Date To	<input type="text" value="mm/dd/yyyy"/>

[+ More Options](#)

Search

Reset

313 result matches the search criteria

Showing 1 to 10

### [FEMA Case Number: 19-05-2387A - Supporting Artifacts \(Amendments\)](#)

Project ID/Name: HOUCK MEADOWS NO. 2, SECTION 5, LOT 234 -- 420 CRANE DRIVE | Type of Data Product: Supporting Artifacts (Amendments)  
| Effective Date: 04/16/2019 | Date Uploaded: 04/17/2019 | Project CID(s): 390795-ENON, VILLAGE OF | Product CID(s): 390795-ENON, VILLAGE OF

### [FEMA Case Number: 19-05-2387A - Final Determination \(Amendments\)](#)

Project ID/Name: HOUCK MEADOWS NO. 2, SECTION 5, LOT 234 -- 420 CRANE DRIVE | Type of Data Product: Final Determination (Amendments)  
| Effective Date: 04/16/2019 | Date Uploaded: 04/17/2019 | Project CID(s): 390795-ENON, VILLAGE OF | Product CID(s): 390795-ENON, VILLAGE OF

# Future Needs

## **What we've heard:**

- **Improve the Study Tracker Map to show progress to completion and upcoming milestones**
- **Connect the file repositories (H&H) to the project status information in the Study Tracker Map**

**We want to hear more from you**

# Resources

- CNMS Viewer
  - [msc.fema.gov/cnms](https://msc.fema.gov/cnms)
- Links to know:
  - MIP - [hazards.fema.gov](https://hazards.fema.gov)
  - MIP Study Tracker Map (MIP Tools and Links)
  - Search Engineering Data tab (MIP Tools and Links)
- Other tools:
  - MSC Products and Tools page (in MSC navigation)
  - MIP GIS Services Web Page (MIP Tools and Links)



Questions?

**Thanks for Attending!**



FEMA